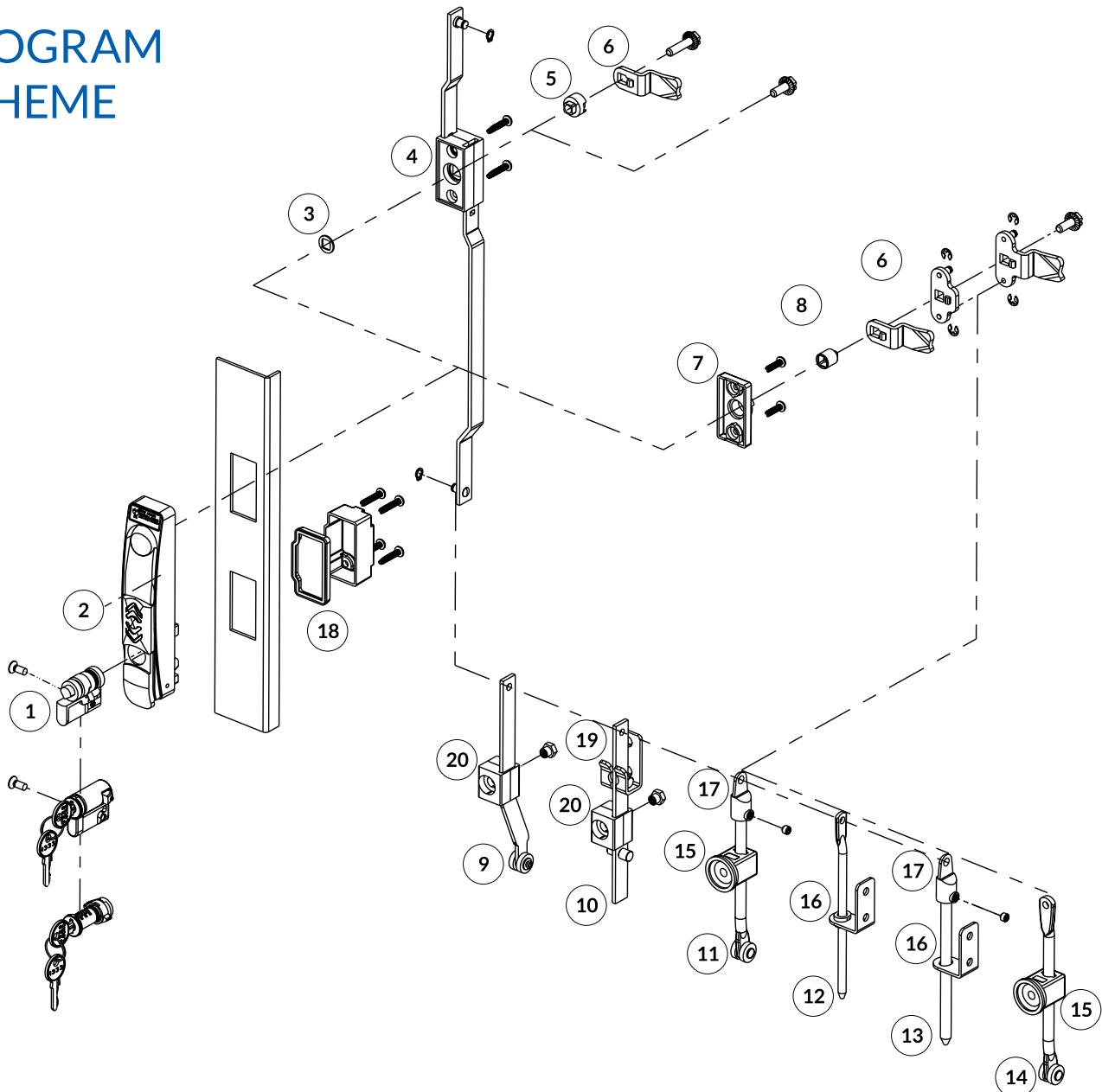




PROGRAM SCHEME

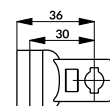


Rep	No. Code	Description
1	D868, P848, P829	Europrofile and spanner europrofile cylinders
2	H826, H827, H828, H829, H830	Swinghandles
3	P3121	Washers
4	W107-X	Rod control
5	P3152	Adapter used for set : rod control system + 1 point cam
6	Wg. specyfikacji NPL001; NPL002; NPL003	Cams: 1, 2 or 3 points
7	P3150	Cover used for cams in a system without a rod control system
8	P3149	Adapter used for handles equipment with 1, 2 and 3 points cams
9	PR10-A-B-L, PR11-A-B-L	Flat rods with roller
10	PR2-M-K-L	Flat rods with dual pressure roller
11	PR3803-A-B-L	Rods with roller
12	PR3611-L, PR3612-L, PR3811-L	Rods
13	PR3801	Rods
14	PR3813	Rods with roller
15	W108-X	Rod guide: W108-1 for rods PR36, W108-2 for rods PR38
16	W109-X	Rod guide: W109-1 for rods PR36, W109-2 for rods PR38, except PR3813
17	W105-X	Adapter for rods : PR3801, PR3803
18	P9002	Gasket used in swing handles with IP
19	W102	Rod catch for PR2
20	W106	Rod guide for PR1 and PR2

UWAGI

1. Washer P3121 used only for swinghandle with rod control without cam.
2. For 2 and 3 point cams, use rods only from positions 11, 12, 13 and 14.

3. For rod guide from position No. 15 is possible to adjust the distance from the sheet to the axis of rod, thanks to W104.



1:2

