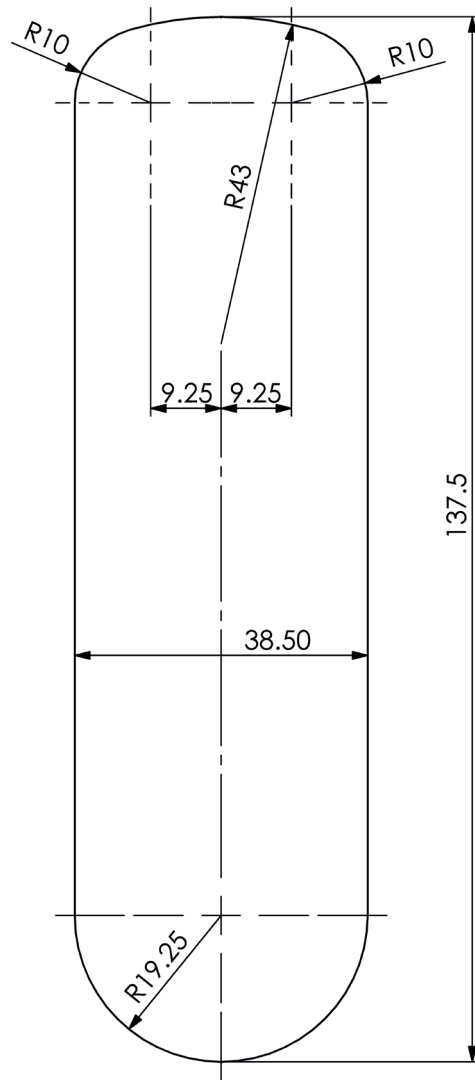


Installation Template



IF USING A PRINTED TEMPLATE,
PLEASE CHECK THIS DIMENSION IS CORRECT

IMPORTANT NOTE

Before drilling fixing holes, please ensure that the position of the digital lock, when fitted, will allow clearance for the cam to function.

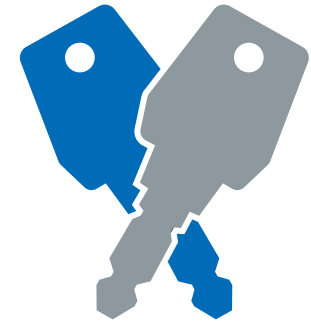
Euro-Locks SA NV (Belgium)
E: sales@euro-locks.be
T: +32 61 212.261

Euro-Locks SA (France)
E: euro-locks@euro-locks.fr
T: +33 (0)3.87.92.61.11

Euro-Locks Sicherheitseinrichtungen GmbH
(Germany)
E: vertrieb@euro-locks.de
T: +49 (0) 6897 9072 0

Euro-Locks Sp. z o. o. (Poland)
E: sekretariat@euro-locks.pl
T: +48 (32) 344-78-70, -82, -84

L&F A Lowe & Fletcher Group Company



INSTALLATION INSTRUCTIONS

3784 Flush Mounted Digital Combination Locks

9224226 - 3784 Flush Fitting Installation Instructions V2 January 2024

euro-locks.com

INSTALLATION INSTRUCTIONS

3784 Flush Fit Digital Combination Lock

REMOVE BATTERY PULL TAB BEFORE FIXING LOCK

Step 1 Before installing the Digital Combination Lock, familiarise yourself with the operation and programming. (See Programming Guide).

Step 2 Remove battery pull tab and fit the battery holder using M4 x 10mm screw provided. Tighten to 1Nm maximum. **Failure to fit the Battery Holder will allow the batteries to fall out of the lock if the door is slammed.**

Step 3 Cut aperture in door using the template or dimensional data provided, ensuring that the position of the Digital Combination Lock will allow clearance for selected cam to work. **If using the template, please ensure that it is the correct size. Copies may be distorted.**

Step 4 Pass the Digital Combination Lock through the door aperture from the front of the door.

Step 5 Fit the Plastic Clamp Box over the rear of the Digital Combination Lock.

Step 6 Using 2 x M4 Fixing Screws of the appropriate length (refer to data sheets for correct screw lengths), tighten the upper and lower screws to no more than 1Nm.

Step 7 Select the cam which suits your door and frame and attach it to the square shaft at the end of the spindle using a M4 x 8 screw and Domed Spring Washer.

Step 8 Check the operation of the lock using the factory User Code 22 44.

Step 9 If the lock is functioning correctly, CHANGE THE DEFAULT MASTER CODE (11335577) and DEFAULT USER CODE (2244) and program the lock using the programming and operating instructions.

IMPORTANT

All Lowe & Fletcher Digital Locks are manufactured with a common Master Code. For security reasons this must be changed prior to use. Keep a note of your new Master Code - it is not possible to re-program the lock without it.

