

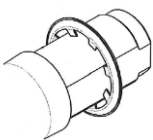


ELLO brings a new and fresh feel to the lockers world. The new look of latch locks is proudly introduced to the market place.

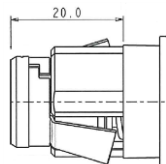
Main Features:

- ✦ Free wheel turning system
- ✦ Body and head made in ZAMAK
- ✦ New design giving a fresh impetus to the latch lock world
- ✦ Various fixing hole sizes
- ✦ Suited for padlock loops from 5 to 8mm diameter
- ✦ Three Body Lengths 31,70mm, 20,00mm, 19,50mm

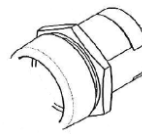
Four Available fixings



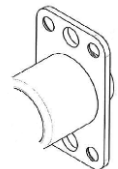
Quick washer
(For 32 & 20mm body length)



Quick Fixing
(Only 20mm body length)
Panel thickness from 0,8 to 1,6mm



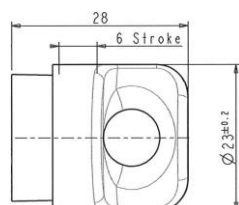
Nut
(For 32 & 20mm body length)



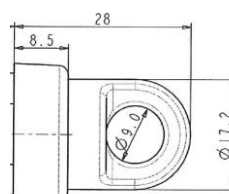
Screw fixing for wood panels
(Only available with 19mm body length and restrained head)

Two Available Head Shapes

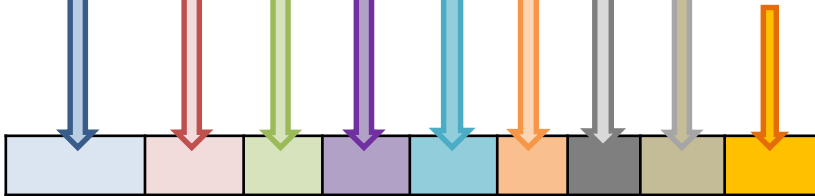
Ergonomic Design = ELOH



Restrained Design = ELOW



ELOW	Latch lock with low head
ELOH	Latch lock with high ergonomic head
Body Lengths	
09	19,5mm – special version with 4 screws fixing – only with ELOW
20	20MM
32	31,7MM
Piercing	
K	16,6 x diameter 19,1mm
H	Diameter 17,7 x 20,3mm (only available on snap in fixing version – ELOW/H20)
J	16,0 x diameter 19,1mm
Z	Diameter 23mm (only available on special version with 4 screws – ELOW09)
Shutter	
0	Shutter not available
Cam Fixing	
C6	Cam fitted with a clip (max 2mm cam thickness)
S6	Cam with star piercing fixed with screw and washer
S7	Cam with cross piercing fixed with screw and washer
Key Rotation	
01	90° Clockwise
Finish	
7B	Body and head in Bright Nickel
2A	Body and head in Bright Chrome
8H	Body in Bright Nickel and head in Black
1A	Body in Bright Nickel and head in White powder coating <small>(RAL9010)</small>
Lock Fixing	
N	Nut Fixing
H	Horseshoe clip (please specify panel thickness)
S	Snap In fixing (please specify panel thickness)
Z	Fixing with 4 screws (not supplied)
Master	
0	No masterkey system



EXAMPLE

ELOW	32	K	0	LC	01	7B	N	0
-------------	-----------	----------	----------	-----------	-----------	-----------	----------	----------

ELOW Lock – 32mm body length- fixing hole size diameter 19,1 x 16,6mm -- Cam fitted with e-clip - 90° Movement Clockwise – nickel finish - Nut fixing - Without Master.

Euro-Locks SA NV (Belgium)

E: sales@euro-locks.be

T: +32 61 212.261

W: www.euro-locks.be

Euro-Locks Sicherheitseinrichtungen GmbH (Germany)

E: vertrieb@euro-locks.de

T: +49 (0) 6897 9072 0

W: www.euro-locks.de



EURO-LOCKS
LOCKING SYSTEMS FOR INDUSTRY

Euro-Locks SA (France)

E: euro-locks@euro-locks.fr

T: +33 (0)3.87.92.61.11

W: www.euro-locks.fr

Euro-Locks Sp. z o. o. (Poland)

E: sekretariat@euro-locks.pl

T: +48 (32) 344-78-70, -82, -84

W: www.euro-locks.pl

L&F A Lowe & Fletcher Group Company