



# Smart Locking Solutions



# The Future of Smart Locking

How people use their spaces is changing. Smart locks and locking systems are reshaping the way you work by delivering security, convenience, and an outstanding user experience. From our best-selling digital locks to battery-free NFC-powered locks and our touchscreen Zodiac system, we can provide a range of smart locking solutions for your needs.

Whether you're looking to make life easier for customers, staff or pupils, our range of intelligent locking systems make every interaction more efficient. We help to create simple, convenient and reliable solutions for safety and security in any commercial or industrial application including lockers, office furniture, enclosures and postal and delivery systems.

Part of the Lowe & Fletcher Group, we have been designing, manufacturing and supplying locking systems for commercial and industrial applications since 1889.



**For information on digital locks or our range of smart locking solutions, please contact our expert sales team.**



# Contents

PAGE  
4

Smart Solutions Overview

PAGE  
6

Zodiac

PAGE  
8

ECHO

PAGE  
10

RAS 2.0

PAGE  
12

Digital Combination Locks Comparison Table

PAGE  
13

Digital Combination Locks Overview

PAGE  
14

About Us

PAGE  
15

Customer Gallery



# Compare Smart Solutions

Let's help you find the perfect smart locking solution.

## Systems at a glance



### Best suited applications

Workspace Storage

### Works with

Electronic Latch Locks, Touchscreen, RFID Reader, Zodiac Web Portal.

### Key features

- Fully integrated RFID-based access control system
- PIN code access available
- Real-time monitoring and remote management via cloud or local network
- Flexible modes: Secure private access, Guest mode and Registered Public options
- Intuitive web-based dashboard
- Supports both standalone and networked configurations
- Multiple user roles: Administrators, Private and Public users
- Available in multiple sizes and configurations to fit various lockers and enclosures
- Scalable to thousands of lockers across different locations
- Wet area options available
- API integration



### Best suited applications

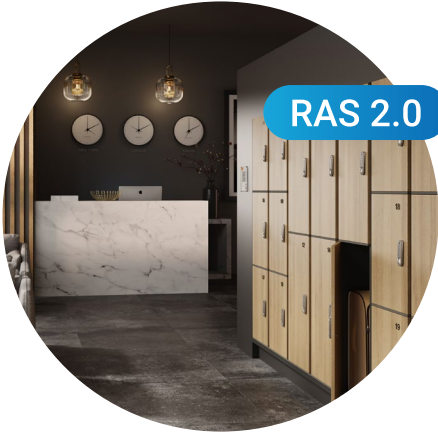
Workspace Storage, Education Facilities, Sports Clubs and Leisure Centres, Transport Hubs, Tourist Attractions.

### Works with

ECHO Lock, ECHO Mobile App, ECHO Web Portal (Standard or Pro).

### Key features

- Completely battery-free, wire-free, and power-free
- Powered by Near Field Communication (NFC) Technology
- Flexible operating modes: Private Mode, Public Mode and Registered Public Mode
- Mobile App available on both iOS and Android platforms
- Comprehensive Web Portal available in Standard and Pro versions
- Multiple user options: Administrator, User, and Shared Access
- Key override as standard



**RAS 2.0**

### Best suited applications

Workspace Storage, Education Facilities, Asset Management, Left Luggage.

### Works with

Nimbus Digital Lock, Horizon Digital Lock, Zenith Digital Lock, Gemini Digital Lock, RAS 2.0 Web Portal.

### Key features

- Administrator Control: Easily manage your locker inventory through our user-friendly online dashboard
- Secure Code Generation: Create unique access codes for each locker user directly from our secure platform
- Flexible User Access: Empower your users with convenient self-service options
- Real-time Insights: Gain valuable data and analytics on locker usage patterns
- Seamless Integration: Our system seamlessly integrates with Lowe & Fletcher battery-powered digital locks

### Digital Combination Locks



### Best suited applications

Workspace Storage, Education Facilities, Sports Clubs and Leisure Centres, Transport Hubs, Tourist Attractions.

### Works with

RAS 2.0

### Key features

- Battery powered offering a minimum of 50,000 uses before battery needs changing
- Surface mount and flush fitting options
- Management override key
- Wet area, RFID and many other versions available



**Need some more help?  
Contact our expert team who  
can advise you of the right  
solution for your needs.**



# Zodiac Workspace Overview

Using RFID technology (Radio Frequency Identification) and secure PIN code access, Zodiac Workspace delivers smooth, frictionless storage with just the simple tap of a card. No keys. No waiting. No hassle.

Zodiac Workspace doesn't just open lockers – it opens up possibilities.

## HOW IT WORKS

Zodiac lockers can be accessed in seconds, simply using an RFID card or PIN code. A clear, easy-to-use touchscreen menu makes every step quick and intuitive.

Storage can be assigned on a personal, registered user, or guest basis. Zodiac provides all the options you need to bring your storage ideas to life. It even supports multiple languages, making it perfect for international workforces and visitors.

System settings are controlled through an administrator menu on the terminal. This provides instant access to permission-managed functions. Usage logs are also available for audit purposes, in case of investigation requirements.

For more information on  
**Zodiac Workspace**



## Q FLEXIBLE OPERATING MODES

Zodiac gives you the power to tailor locker use to your environment – whether you're managing assigned desks, hybrid teams or high-traffic guest areas.

### Private Mode

Assign lockers to individual users for exclusive, ongoing access.

### Registered Public Mode

Perfect for hybrid teams or shared offices.

### Guest Mode

For open environments, like co-working spaces or visitor zones.

### Zodiac Web Portal

Administrators can assign lockers, track usage and control access across all operating modes in real time and from any location.



# Zodiac System Components

Designed with specifiers and installers in mind, Zodiac Workspace is refreshingly easy to install. No need for bulky electrical enclosures and complex on-site wiring. Each bank of lockers includes just four elements:



## Touchscreen Control

The Zodiac system includes a slimline 10.1-inch, LCD touchscreen providing users with a terminal for storage selection. Designed for flush mounting on the locker bank, this gloss-black display looks as good as it performs. An energy-efficient LED backlight uses less power and generates less heat – ideal for indoor spaces like lobbies and workspaces.



## Electronic Latches

Zodiac electronic latches include a range of innovative features. Built to handle everyday wear and tear, they make life easier for both users and installers.



## Distribution Boards

Zodiac distribution boards connect the touchscreen to the electronic latches. This makes installation, scaling and maintenance so quick and easy. Whether you're setting up small, or installing a full wall of lockers, Zodiac Workplace grows with you – no fuss, no rewiring.



## Web Portal

Administrators can assign lockers, track usage and control access across all operating modes in real time and from any location.

# ECHO Overview

Meet ECHO, the revolutionary, battery-free, NFC-powered locking system

Lock and unlock with just a tap of your smartphone – no keys, no batteries, no maintenance.

The eco-friendly future of lock management is here

## HOW IT WORKS

A groundbreaking innovation, ECHO uses Near Field Communication (NFC) technology to harvest a tiny amount of energy from your phone to close and open your lock.

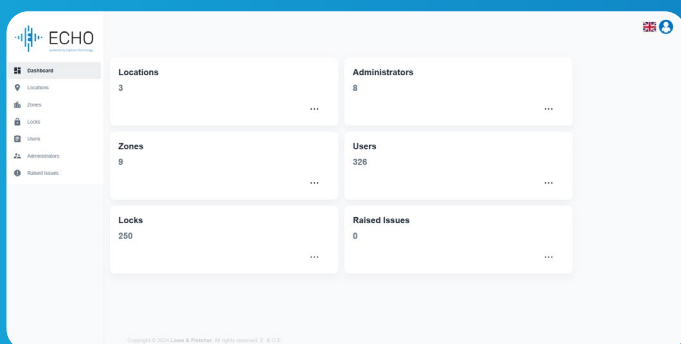
**It's not just evolutionary-it's revolutionary.**

By eliminating the need for traditional power sources, ECHO delivers an eco-friendly, hassle-free locking experience, reducing energy consumption and any environmental impact.

ECHO gives you three operating modes – **Public Mode, Private Mode, and Registered Public Mode** – all configured and controlled using the ECHO mobile app (available on both iOS and Android platforms).

For businesses with larger storage needs or those that require more control, ECHO locks can be administered through the Web Portal (standard or pro version available).

**Experience ECHO for yourself. Simplicity, sustainability and security – redefined.**



For more information on  
**ECHO Lock**



**Want to download the ECHO app?**

You'll find it on the Apple Store and Android Store.



# ECHO Typical Applications

ECHO is wire-free and easy to use. The possibilities of how you could use it are endless. All you need is a mobile signal or WiFi connection. Here are just some of our favourite uses:



## Workspace Storage

Secure personal storage for employees. This can either be used with ECHO in Private Mode, where locks are assigned to staff, or in Registered Public Mode, where staff can choose their own lock.



## Education Facilities

With ECHO in Private Mode, give individual lock access to students and staff.



## Asset Management

With ECHO in Private Mode, give controlled access to valuable tools, equipment, or resources.



## Sports Clubs, Gyms and Leisure Centres

With ECHO in Public Mode, any member who has access to storage areas can choose a locker for use. With ECHO in Registered Public Mode, grant members access to secure personal storage, with a choice of locker.



## Transport Hubs (airports, bus and train stations)

General public access to storage lockers.



## Tourist Attractions

With ECHO in Registered Public Mode, grant visitor-only access to storage areas.

# RAS Overview

RAS 2.0 Remote Allocation System from Lowe & Fletcher and Euro-Locks is code management software that enables you to remotely manage access to all of your locks without the need to be on site.

All that's required to unlock a compartment is a simple code generated on our secure website. **No need** to handle keys. **No need** for on-site reprogramming. **No need** for a supervisor to be there in person.

Managers can see at a glance which locks are free and ready to be allocated to new users. The same system can manage multiple sites, simply and conveniently, **all from one place**.

## HOW IT WORKS

Using the **lock management software**, new user codes are generated online. When the user enters it into their lock it immediately replaces the old code. This ensures **safe** and **secure** access for new users without an administrator needing to be present.

For more information on  
**Remote Allocation System**



For more information watch  
**RAS System Overview**



## SELF SERVICE

- 1 Each bank of locks is set up with a mobile-friendly booking page which is accessed by users in advance, or by scanning a QR code on arrival.
- 2 The manager sets payment levels (if any) for each bank of locks.
- 3 After users have booked, the site sends them their access code.
- 4 The booking system can be embedded directly into any existing company website for a seamless user experience.



# RAS Typical Applications

The system works brilliantly across many applications and is ideally suited to the following:



## Education

Imagine if every term there was no need to manually reset the code on the students' lockers. The RAS 2.0 lock management website can send students their new locker number and code and take payment if required.



## Asset Management

RAS 2.0 is a cost-effective way to grant and track access to controlled equipment. When on location, the technician scans the QR code, books access and directly gets a single use code.



## Left Luggage Lockers and Bag Drop

Perfect for digital check-in and check-out facilities in hospitality.



## Commercial Offices and Employee Lockers

Agile co-working workplaces rely on flexible storage options for staff and on-site visitors. Use RAS 2.0 to streamline the process of locker allocation in the workplace.

For more information read  
**our RAS Case Study**



For more information watch  
**RAS End User Applications**



# Digital Combination Locks Comparison Table



**Horizon**  
(Model 3950)



**Nimbus**  
(Model 3960)



**Zenith**  
(Model 3780)



**Gemini**  
(Model 3700)

<b>Case Material</b>	Zinc Alloy	Zinc Alloy	Zinc Alloy	Zinc Alloy
<b>Colours</b>	Black, White	Black, Silver, White	Black, Silver, White	Black, Silver, White
<b>Mounting Orientation</b>	Vertical and Horizontal (L&R) Numbers rotated to orientation	Vertical and Horizontal (L&R) Numbers rotated to orientation	Vertical and Horizontal (L&R) Numbers rotated to orientation	Vertical and Horizontal (L&R) Numbers rotated to orientation
<b>Mounting Options</b>	Surface Mount Flush Mount	Surface Mount Semi-Flush Fit	Surface Mount Flush Mount (Model 3784)	Surface Mount Flush Mount
<b>Fixing / Opening Sides</b>	Left or Right, pop out handle	Left 90° or Right 90°	Left 90° or Right 90°	Left 90° or Right 90°
<b>Steel / Mechanical Override Key</b>	✓	✓	✓	✓
<b>Fixing Points</b>	2, one nut, one screw	2 or 3	2 or 3	2
<b>Slamlock Option</b>	No	✓ (Model 2383)	✓ (Model 37800)	No
<b>Battery Requirements</b>	1 x CR123 Lithium Battery	2 x AAA batteries	2 x AA batteries	1 1/2 AA 3.6V battery
<b>Typical Battery Life</b>	Up to 50,000 uses per battery	Up to 50,000 uses per pair of batteries	Up to 50,000 uses per pair of batteries	Up to 50,000 uses per battery
<b>Battery Condition Indicator</b>	✓	✓	✓	✓
<b>Scheduled Unlock</b>	✓ (Model 3951)	✓ (Model 3965/3966)	✗	✗
<b>Wet Area Version</b>	✗	✓ (Model 3961/3964/3966)	✓ (Model 3781)	✗
<b>Wet Area Rating</b>	✗	IP65	IP65	✗
<b>RFID Version</b>	✗	✓ (Model 3963/3964/3965/3966)	✗	✗
<b>RFID Standards</b>	N/A	ISO14443A	N/A	N/A
<b>RFID Protocols</b>	N/A	Mifare Classic (1k & 4k) Mifare Desfire (EV1, EV2, EV3) Mifare Ultralight (C & EV1) Legic Advant	N/A	N/A
<b>RAS Mode</b>	✓	✓	✓	✓
<b>ADA/DDA Compliant</b>	✓	✗	✓ (Model 3782)	✗

# Digital Combination Locks Overview

Designed to complement our traditional locking products, the Euro-Locks range of digital and RFID smart locks are an ideal solution for your digital locking requirements.

The smart locks we manufacture eliminate the need for user keys and so vastly reduce associated costs. With many different designs and features, these advanced locking systems offer convenience and reliability for any commercial or industrial applications including lockers, office furniture, enclosures and postal and delivery systems.

Our popular range of battery powered smart locks are fully compatible with our RAS 2.0 system and are the only smart locks with a management override key providing that extra piece of mind.



For more on  
**Horizon**



## Horizon

A premium, completely flat-flush lock with advanced features and modern look and feel.

### Standard features include:

- ✓ Secure pop-out turn handle (flush when locked) with coloured indicator ring
- ✓ Management override key
- ✓ Surface mounted and Scheduled Unlock versions also available



For more on  
**Zenith**



## Zenith

The most robust yet versatile, easy to use digital lock that is available with a wide range of standard and advanced features.

### Standard features include:

- ✓ Management override key
- ✓ Surface mount and flush fitting options
- ✓ Wet area, slamlock and ADA compliant versions also available



For more on  
**Nimbus**



## Nimbus

The next generation of digital combination locks includes a membrane touch keypad, while the illuminated 'halo' around the logo button signals button presses and operations on the lock.

### Standard features include:

- ✓ Slimline design in both surface and semi-flush fitting
- ✓ Management override key
- ✓ Wet area, RFID and Scheduled Unlock versions also available



For more on  
**Gemini**



## Gemini

A small, easy to use electronic lock with a small footprint and vertical, left hand or right hand fixing.

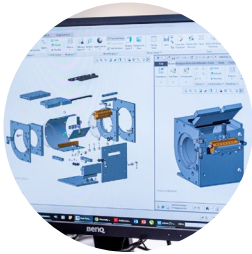
### Standard features include:

- ✓ Management override key
- ✓ Surface mount and flush fitting options
- ✓ Simple, quick fixing

# About Lowe & Fletcher and Euro-Locks

Lowe & Fletcher and Euro-Locks design and manufacture locking systems for a broad range of industrial and commercial customers worldwide.

We supply over 80 million products annually, from precision mechanical locks to the latest digital and electronic locks with many different solutions, enabling us to meet diverse locking requirements.



## Design

We work closely with all our customers to ensure they have the right locks and locking systems for their requirements. Using computer-aided design and rapid prototyping we are able to produce a 3D solid model of the lock for customer approval within 24 hours if required.



## Precision Manufacturing

All our locking systems are manufactured in one of our six facilities. Utilising advanced primary and secondary manufacturing processes, we can ensure our production is efficient, flexible and driven by quality.

Automation plays a critical role in our precision manufacturing and a highly skilled workforce provides many years of experience in the final assembly of our products. This combined approach ensures quality is maintained throughout the process.



## Supply

Whatever the solution we can supply in small or large volumes from our own operations. Our UK facility houses all the essential skills and processes under one roof, giving us full control over quality and output including design, tooling, PCB and component manufacturing.



## Heritage

Lowe & Fletcher have been making locks since 1889. As a sixth generation family business we are proud of our heritage.

# Smart Locking Applications



**Fitness Studios**



**Collection & Drop Off**



**Mobile Phone Storage**



**Tourist Attraction Storage**



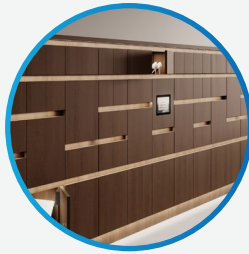
**University Student Storage**



**Sports Team Personal Storage**



**School Student Storage**



**Employee Storage**



**Asset Management**



**Sporting Facilities**

# We're here and ready to help

We have been manufacturing smart locks and locking systems in our UK facility for over 20 years and have sold over 2 million smart locking solutions globally. Supported by our expert teams in Europe and America, we are your trusted partner for any locking requirement.

Visit our websites for more information:

Lowe & Fletcher

[www.lowe-and-fletcher.co.uk](http://www.lowe-and-fletcher.co.uk)



Euro-Locks

[www.euro-locks.com](http://www.euro-locks.com)



Lowe & Fletcher Inc

[www.loweandfletcherinc.com](http://www.loweandfletcherinc.com)



## CONTACT DETAILS

### Lowe & Fletcher Ltd (UK)

E: [sales@lowe-and-fletcher.co.uk](mailto:sales@lowe-and-fletcher.co.uk)

T: +44 (0) 121 505 0400

### Lowe & Fletcher Inc (USA)

E: [sales@loweandfletcherinc.com](mailto:sales@loweandfletcherinc.com)

T: +1 (616) 994 0490

### Euro-Locks SA NV (Belgium)

E: [sales@euro-locks.be](mailto:sales@euro-locks.be)

T: +32 61 212.261

### Euro-Locks SA (France)

E: [euro-locks@euro-locks.fr](mailto:euro-locks@euro-locks.fr)

T: +33 (0)3.87.92.61.11

### Euro-Locks Sicherheitseinrichtungen GmbH (Germany)

E: [vertrieb@euro-locks.de](mailto:vertrieb@euro-locks.de)

T: +49 (0) 6897 9072 0

### Euro-Locks Sp. z o. o. (Poland)

E: [sekretariat@euro-locks.pl](mailto:sekretariat@euro-locks.pl)

T: +48 (32) 344-78-70, -82, -84



**L&F** A Lowe & Fletcher Group Company

© Copyright Lowe & Fletcher Group 2026.