



ENCLOSURE MARKET

Euro-Locks Group specializes in design and manufacture of locking systems for a broad spectrum of industrial customers.

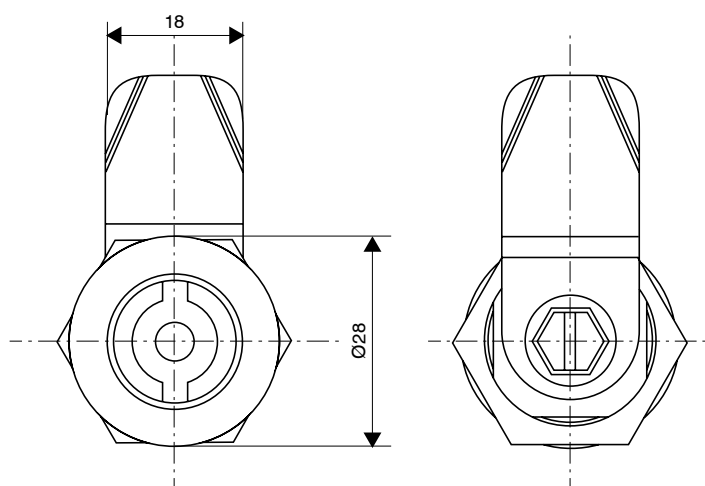
Our offer is distinctive for a wide range of products:

- Locks for the power market
- Locks for the construction market
- Locks for metal furniture
- Locks for wooden furniture
- Locks for postal boxes
- Locks for the automotive market
- Locks for safes
- Locks for window handles and other.

We manufacture IP65 class spanner locks, swinghandles, hinges, seals, camlocks, padlocks, mechanical combination locks, electronic locks, safe locks, switches, locks for window handles, barrels for different applications, locking systems for roof boxes and many others.

Why it's good to cooperate with us?

- A wide range of products (over 1000 product references)
- Highest quality of manufactured locks, confirmed with ISO9001 and VDS certificates
- Statutory warranty
- Stability of cooperation
- Excellent price-performance ratio
- Production flexibility
- Possibility of designing and manufacturing products that meet individual customer's requirements.





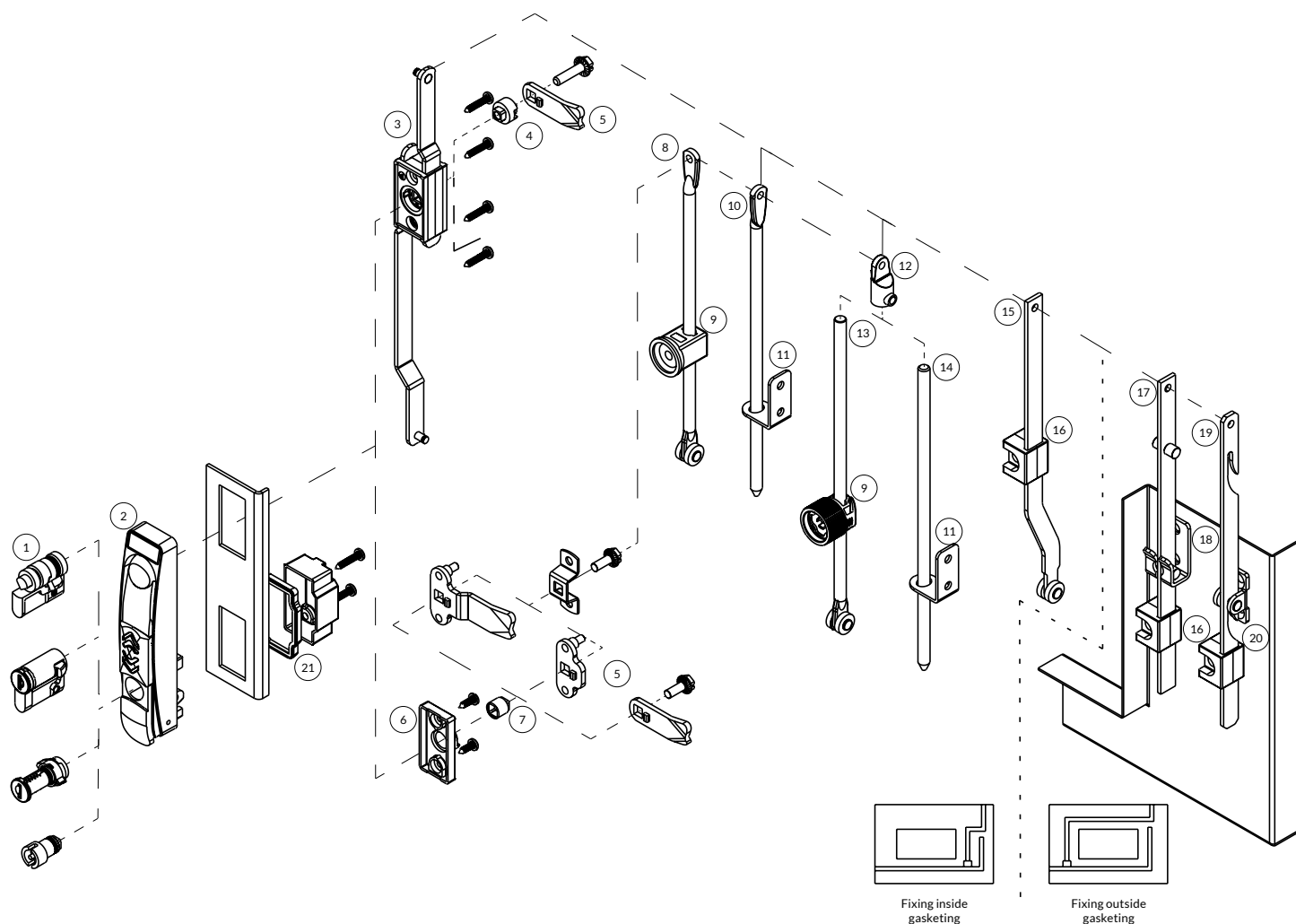
CONTENTS

Symbol	Description	Page
PROGRAM		
50/50/50	Program scheme	4
EUROPROFILES		
D868	Europrofile cylinder	5
P848	Europrofile cylinder	6
P829	Spanner europrofile cylinder	6
HANDLES		
H826	Swinghandle for europrofile	7
H827	Swinghandle with barrel	8
H829	Swinghandle with barrel	9
H828	Swinghandle for europrofile	10
H830	Swinghandle for europrofile	11
H812	Swinghandle with spanner barrel	12
PROGRAM		
PROGRAM 50×50×50 and 50×25	Escutcheon scheme program	13
ESCUTCHEONS		
H807	Escutcheon with spanner barrel	14
H808	Escutcheon with spanner barrel	15
H407	Escutcheon with T-handle	16
H802, H805	Short escutcheons with spanner barrel	17
H405	Short escutcheon with T-handle	18
ACCESSORIES		
W107, W204	Rods control	19
P3149, P3152	Adapters for cam	20
P3150, P9002	Cover and gasket for swinghandle	20
1-Point cams	Cams parameters	21
2-Point cam	Cam parameters	21
3-Point cams	Cams parameters	22
PR1	Flat rods with roller	23
PR36	Round rods Ø 6	24
PR38	Round rods Ø 8	24
PR38	Round rods Ø 8 with roller	25
PR2	Flat rods with pressure rollers	25
W147	Rod guide	26
W187, W108	Rod guides	27
W102	Rod catch	28
W109	Rod guide	28
W178	Adapter for rod	28

Symbol	Description	Page
PROGRAM		
Ø 23×20	Program scheme	29
LOCKS		
H406	T-handle	30
HINGES		
Z100, Z101, Z102	Concealed hinges	31
Z106, Z132, Z141	Concealed hinges	32
Z200	External hinge	33
Z300, Z306	External hinges	34
Z308, Z318	External hinges	35
Z400, Z403	Pin hinges	36
Z408, Z406	Pin hinge	37
Z526, Z509	Flat hinges	38
H301	Slide latch	39
OTHER LOCKS		
Explanation of product symbol		40
0202, 0233, B827/C046	Camlocks	41
B671, F298, B850	Camlocks	42
P858/P885, P863/P884	Camlocks	43
P859	Spanner lock	44
P888	Camlock	44
F183, F550	Spanner locks	45
B826	Minicoin	46
F600	Spanner lock	46
Keys for spanner locks		47
0025/0036	Winghandle	47
P451	Camlock	47
D144/D329	Compression lock	48
C839	T-handle	48

GASKETS		
U306	Cell sponge rubber	49
U200, U204, U207	Self gripping gaskets	49

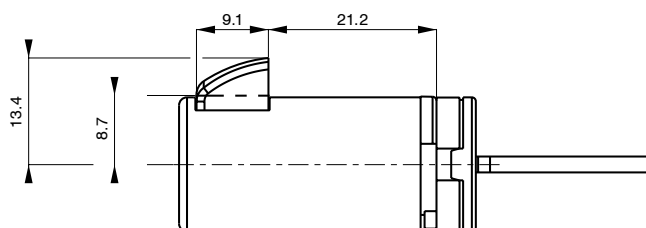
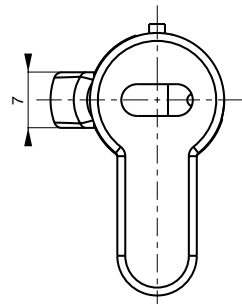
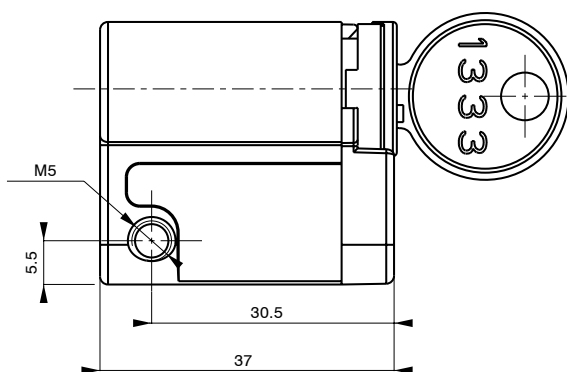
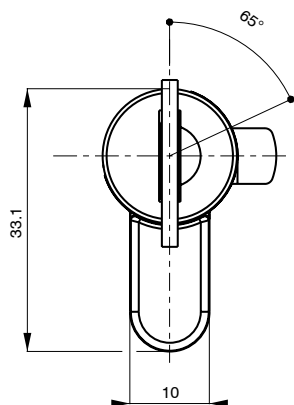
PROGRAM 50/50/50



Ref.	Symbol	Description	Page
1	D867, D868, D932, P848, P829	Europrofiles	5-6
2	H812, H826, H827, H828, H829, H830	Swinghandles	7-12
3, 4, 6, 7, 21	W107, P3152, P3150, P3149	Accessories for handles	19-20
5	1, 2, 3-point cams	Cams	21-22
8, 10, 13, 14, 15, 17, 19*	PR10, PR11, PR3803, PR3612, PR3811, PR3801, PR3813, PR2	Rods	23-25
9, 11, 16, 18, 20*	W108-X, W109-X, W178, W102, W187, W147	Accessories for rods	26-28



D868 EUROPROFILE CYLINDER

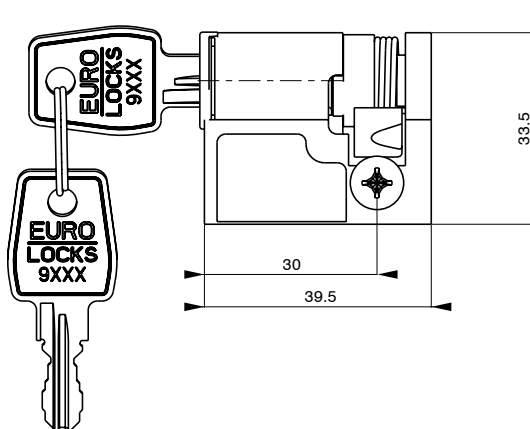
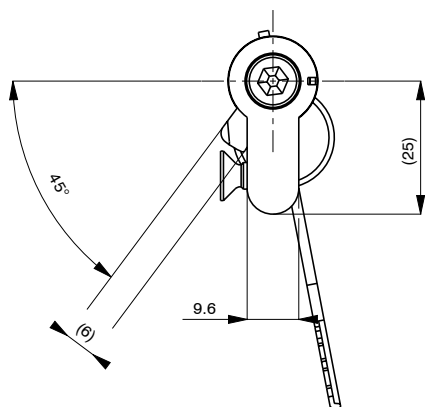


Key's series: R	D868	Key's quantity	Key's variant
		Please write the quantity of the keys, standard 2 pcs	KTP One code, e.g. 1333
			KTD Different codes
Key's series: 89	D867	Key's quantity	Key's variant
		Please write the quantity of the keys, standard 2 pcs	KTP One code, e.g. 089, 013
			KTD Different codes
Key's series: 20, 20M*	D932	Key's quantity	Key's variant
		Please write the quantity of the keys, standard 2 pcs	KTP One code
			KTD Different codes

EXAMPLE: D868 – 2 – KTP 1333

- Material: ZAMAK
- Finish: Achrolyte
- Dust cap cover
- Fixing: screw M5 (included)
- Quantity of combination: 500 (series R), 200 (series 89), 200 (series 20), 50 (series 20M)
- Europrofile with the same key code (e.g. 1333, 089, 013)
- * "Master" Key System available only for 20M series

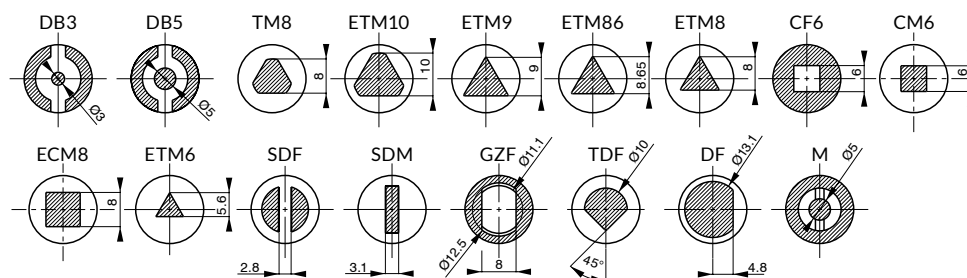
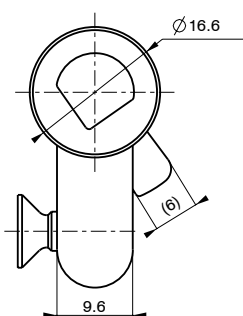
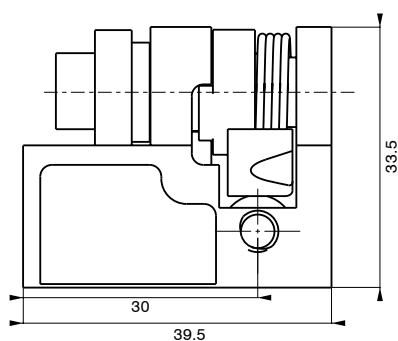
P848 EUROPROFILE CYLINDER



P848	Key's quantity	Key's variant	EXAMPLE:
	Please write the quantity of the keys, standard 2 pcs	KTP One code (possibility to choose with one of the following codes) * 1333, 2433A, 1242E, 405, 455, 9081, EL422	P848 – 2 – KTP 1333
		KTD Different codes (key's series: R, 9000, 9000M **)	

- Material: ZAMAK
- Finish: zinc plated
- Dust cap cover
- Fixing: screw M5 (included)
- Quantity of combination: 500 (series R), 500 (series 9000, 9000M)
- Europrofile with the same key code (e.g. 1333, 9081, EL422)
- * Please define the exact key code for each lock when ordering
- ** "Master" Key System available only for 9000M series

P829 SPANNER EUROPROFILE CYLINDER



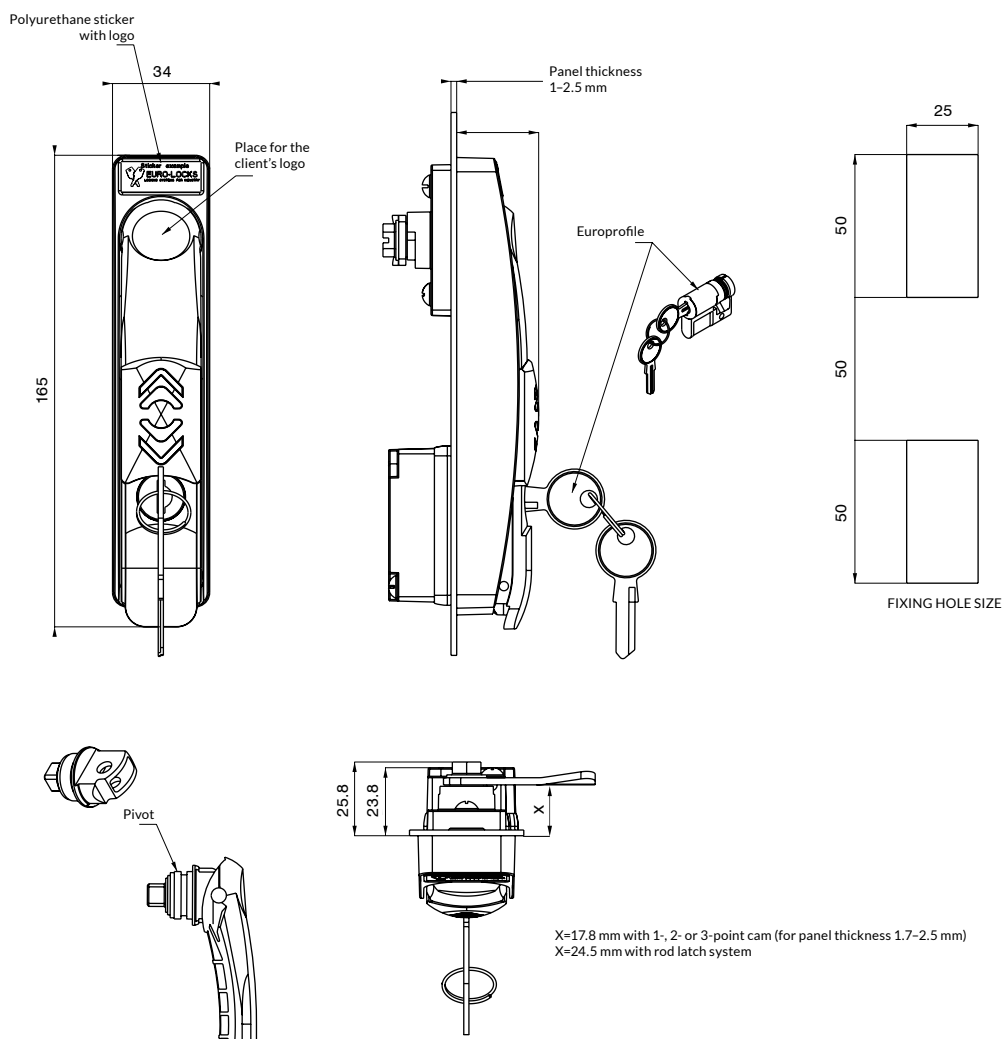
Available barrel shapes

P829	Barrel shape	EXAMPLE:
	Please write the key shape: ETM, DB3, DB5 or other	P829 – DB5

- Material: ZAMAK
- Finish: zinc plated
- Europrofile cylinder for spanner key
- Fixing: screw M5 (included)



H826 SWINGHANDLE



H826	—	IP65	—	Panel thickness	—	Pivot	—	Material	—	Colour	—	Sticker with logo
		0 NO		1 1-1.5 mm		1 ZAMAK		1 PA6GF30		9005 Black - standard		0 Without logo
		1 YES		2 1.51-2 mm		2 Brass *		2 PA6GF30 V0 *		RAL On request *		1 Sticker E-L
				3 2.01-2.5 mm								2 Client's logo

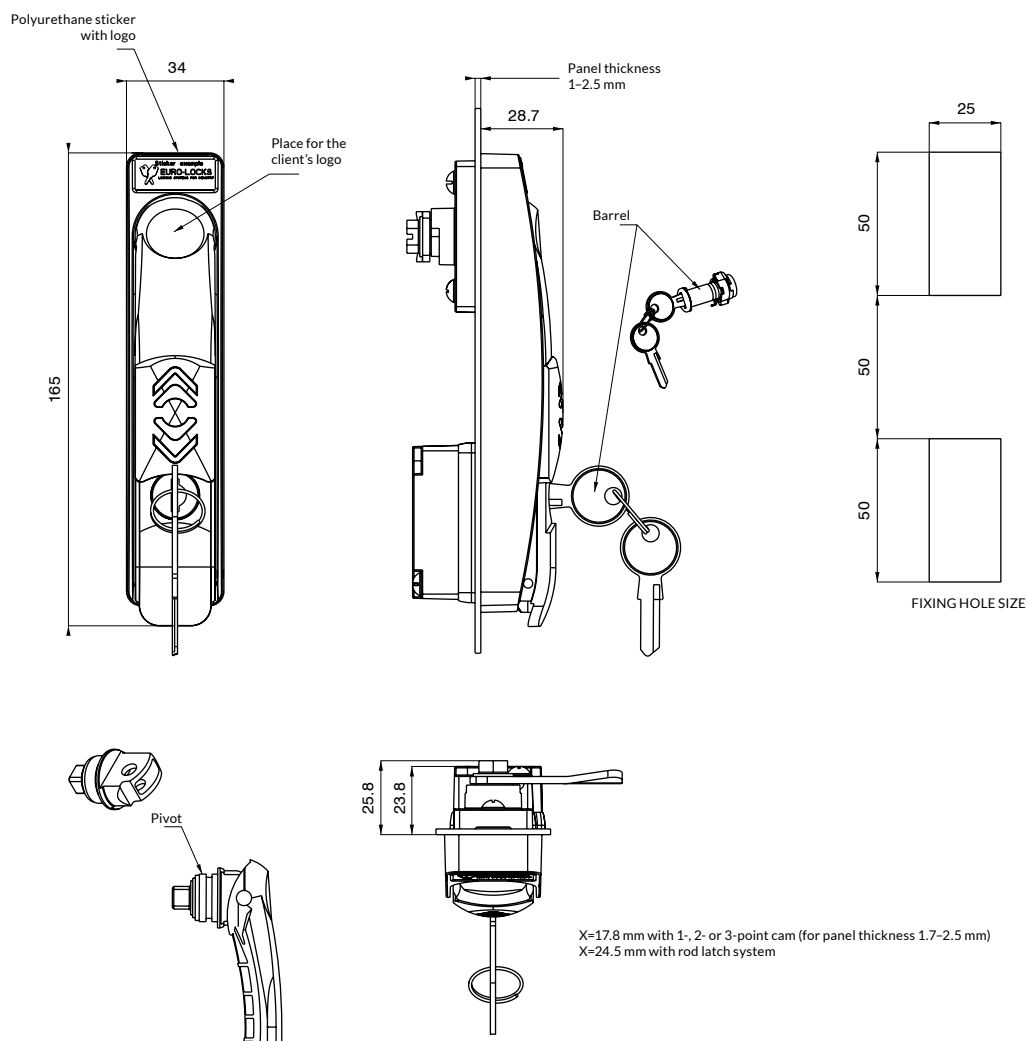
EXAMPLE: H826 - 0 - 1 - 1 - 1 - 1 - 9005 - 1



- Custom made logo (sticker, pad printing or logo done during injection moulding phase) - on request only (please contact our office)
- Lock type euro-profile cylinder
- Sliding dust cover version

- **Pop out function**
- Available with 1-, 2-, 3-point cam or rod latch system
- Europrofile cylinder not included in the set, it must be ordered separately
- * Available on request only (please contact with office)

H827 SWINGHANDLE



H827	IP65	Panel thickness	Pivot	Material	Colour	Sticker with logo
0	NO	1 1-1.5 mm	1 ZAMAK	1 PA6GF30	9005 Black - standard	0 Without logo
1	YES	2 1.51-2 mm	2 Brass *	2 PA6GF30 V0 *	RAL On request *	1 Sticker E-L
		3 2.01-2.5 mm				2 Client's logo

Locking type	Key's quantity	Key's variant
1 Lock without key	Please write the quantity of the keys, standard 2 pcs	KTP One code (possibility to choose with one of the following codes) ** 1333, 2433A, 1242E, 405, 455, 9081
2 Lock with key only		KTD Different codes (key's series: R, 9000, 9000M***)

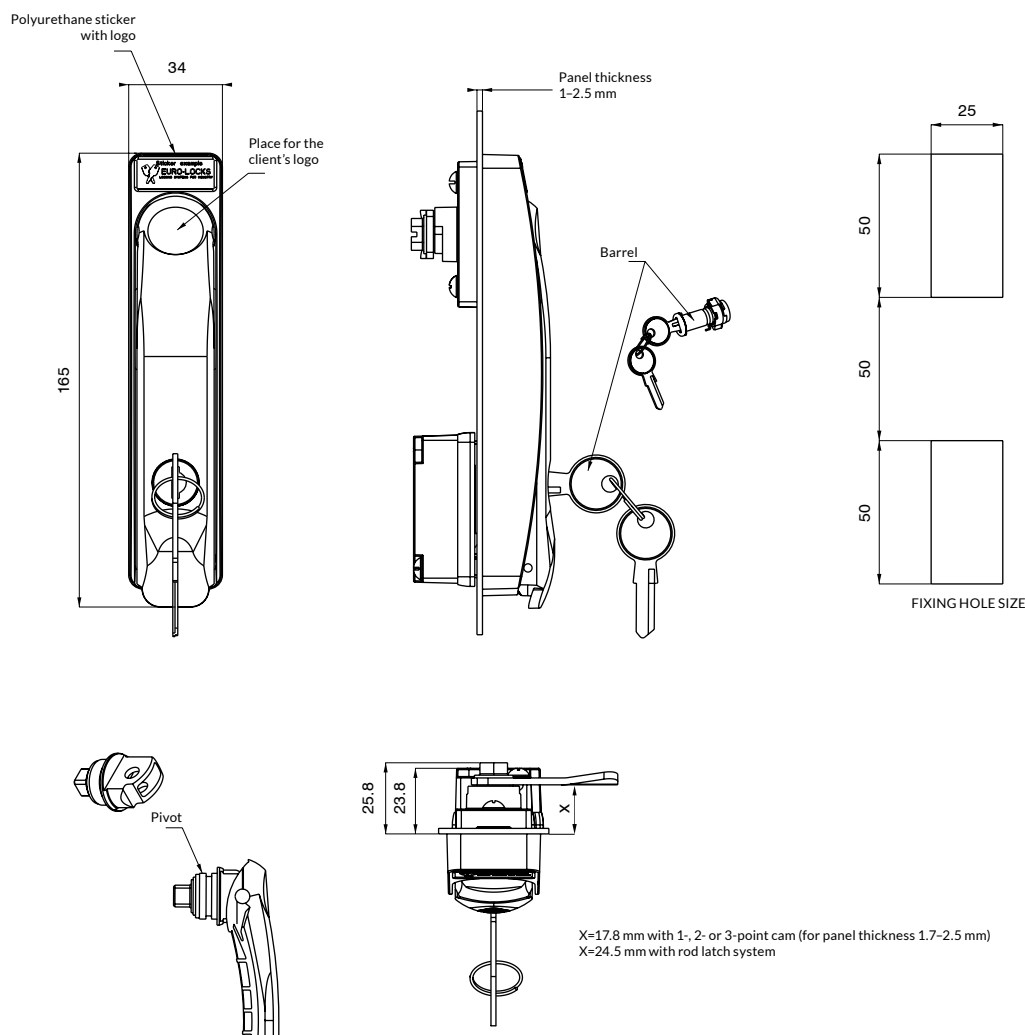
EXAMPLE: H827 - 0 - 1 - 1 - 1 - 9005 - 1 - 1 - 2 - KTP 1333

- Custom made logo (sticker, pad printing or logo done during injection moulding phase) - on request only (please contact our office)
- Locking type: barrel
- Sliding dust cover version

- Pop out function
- Available with 1-, 2-, 3-point cam or rod latch system
- * Available on request only (please contact with office)
- ** Please define the exact key code for each lock when ordering
- *** "Master" Key System available only for 9000M series



H829 SWINGHANDLE



H829	IP65	Panel thickness	Pivot	Material	Colour	Sticker with logo
	0 NO	1 1-1.5 mm	1 ZAMAK	1 PA6GF30	9005 Black - standard	0 Without logo
		2 1.51-2 mm	2 Brass *	2 PA6GF30 V0 *	RAL On request *	1 Sticker E-L
		3 2.01-2.5 mm				2 Client's logo

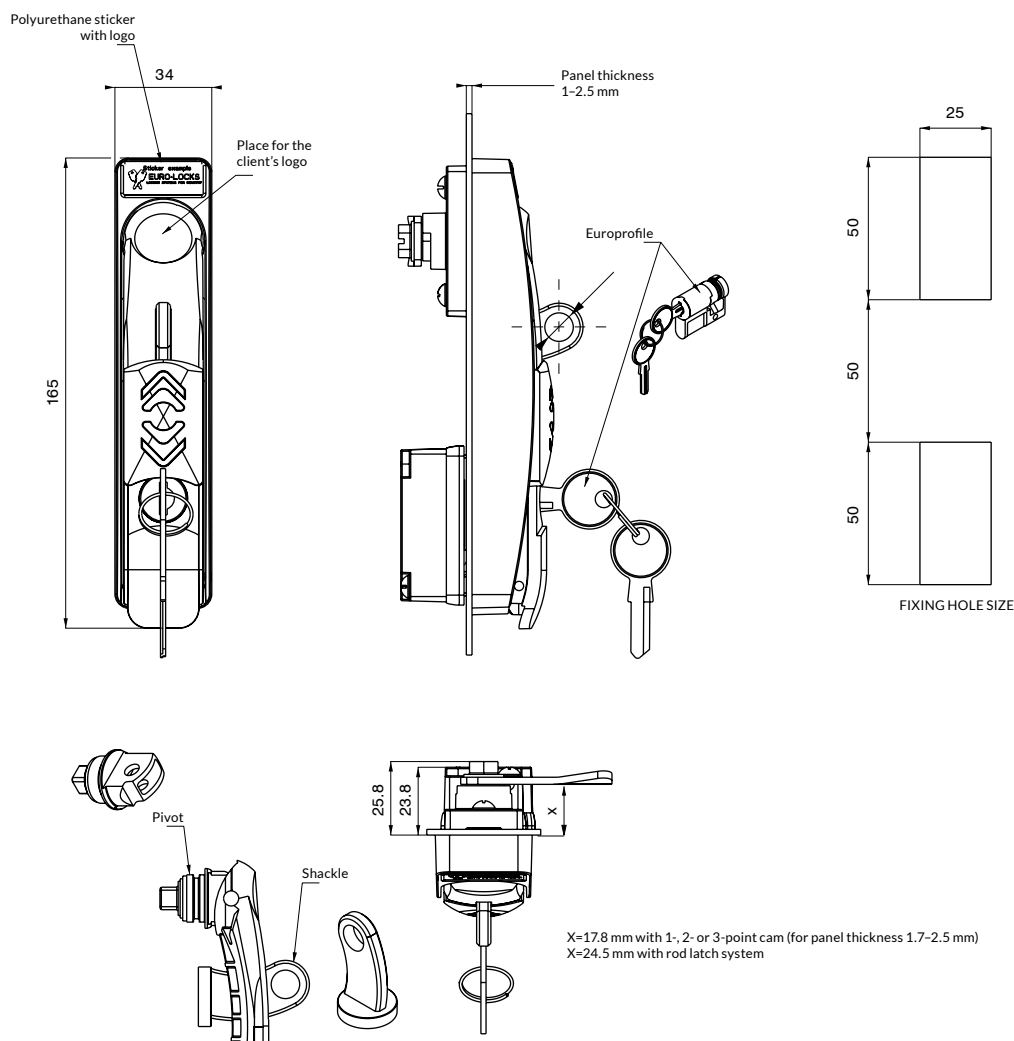
Locking type	Key's quantity	Key's variant
1 Lock without key	Please write the quantity of the keys, standard 2 pcs	KTP One code (possibility to choose with one of the following codes) ** 1333, 2433A, 1242E, 405, 455, 9081
2 Lock with key only		KTD Different codes (key's series: R, 9000, 9000M ***)

EXAMPLE: H829 - 0 - 1 - 1 - 1 - 9005 - 1 - 1 - 2 - KTP 1333

- Custom made logo (sticker, pad printing or logo done during injection moulding phase) - on request only (please contact our office)
- Locking type: barrel
- Pop out function

- Available with 1-, 2-, 3-point cam or rod latch system
- * Available on request only (please contact with office)
- ** Please define the exact key code for each lock when ordering
- *** "Master" Key System available only for 9000M ***

H828 SWINGHANDLE



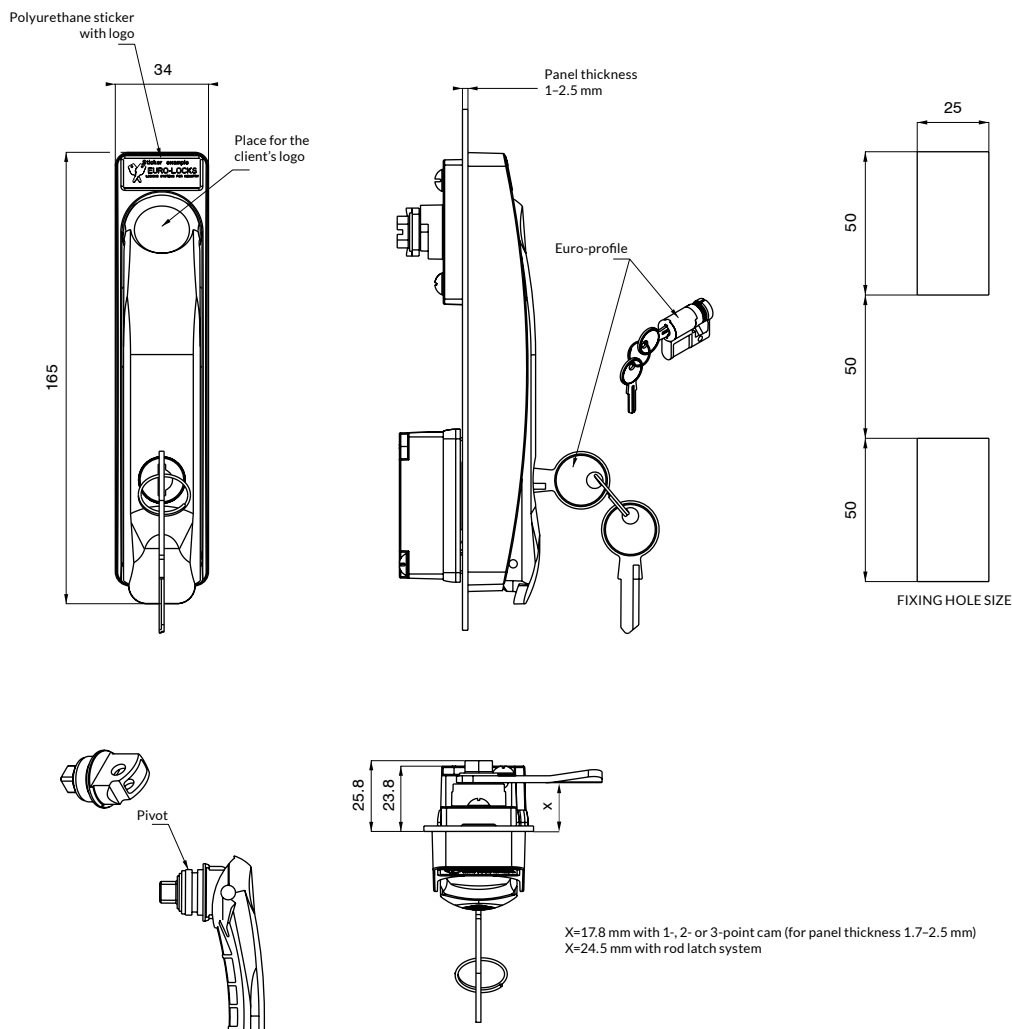
H828	—	IP54	—	Panel thickness	—	Pivot	—	Material	—	Colour	—	Sticker with logo
		0 NO		1 1-1.5 mm		1 ZAMAK		1 PA6GF30		9005 Black - standard		0 Without logo
		1 YES		2 1.51-2 mm		2 Brass *		2 PA6GF30 V0 *		RAL On request *		1 Sticker E-L
				3 2.01-2.5 mm								2 Client's logo

EXAMPLE: H828 – 0 – 1 – 1 – 1 – 9005 – 1

- Prepared for additional locking by padlock
- Shackle's diameter: max. 10 mm
- Custom made logo (sticker, pad printing or logo done during injection moulding phase) – on request only (please contact our office)
- Lock type euro-profile cylinder
- Sliding dust cover version
- Pop out function
- Available with 1-, 2-, 3-point cam or rod latch system
- Europrofile cylinder not included in the set, it must be ordered separately
- * Available on request only (please contact with office)



H830 SWINGHANDLE

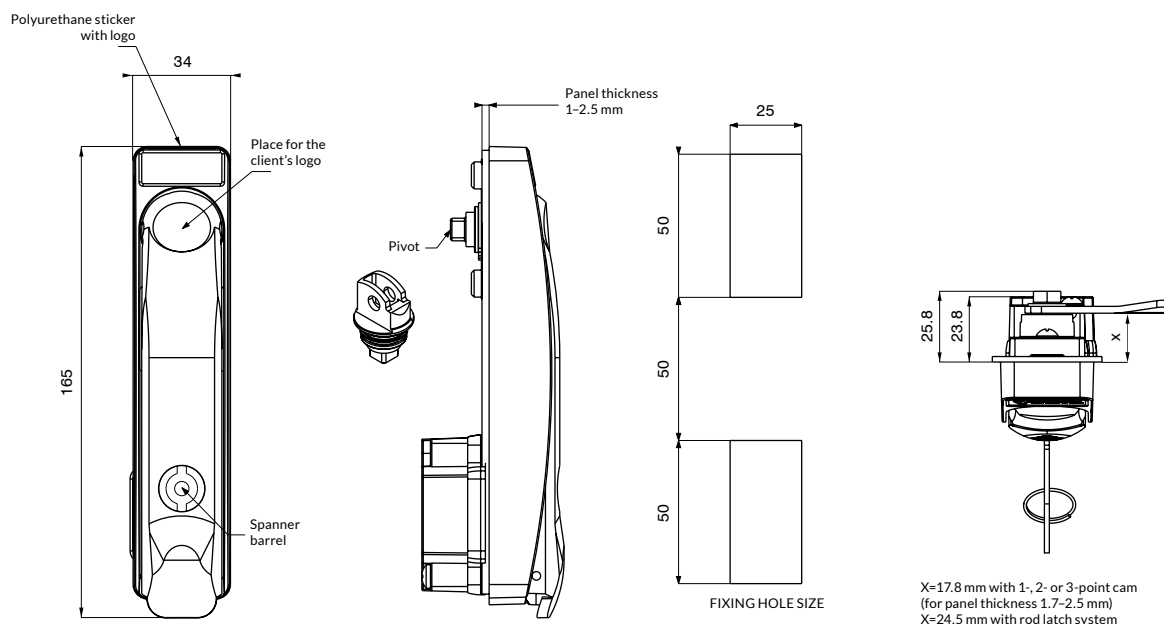


H830	—	IP65	—	Panel thickness	—	Pivot	—	Material	—	Colour	—	Sticker with logo
		0 NO		1 1-1.5 mm		1 ZAMAK		1 PA6GF30		9005 Black - standard		0 Without logo
				2 1.51-2 mm		2 Brass *		2 PA6GF30 V0 *		RAL On request *		1 Sticker E-L
				3 2.01-2.5 mm								2 Client's logo

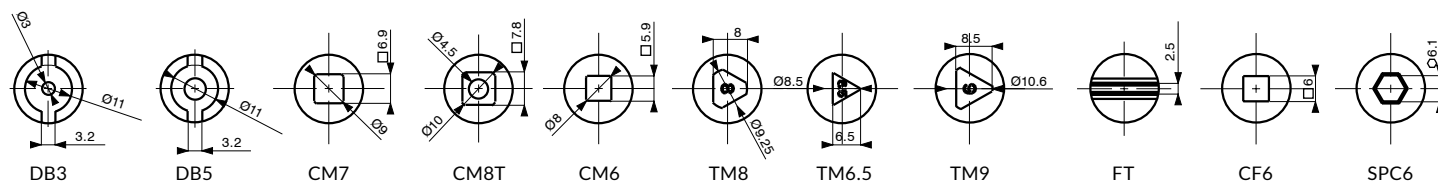
EXAMPLE: H830 - 0 - 1 - 1 - 1 - 9005 - 1

- Custom made logo (sticker, pad printing or logo done during injection moulding phase) - on request only (please contact our office)
- Lock type euro-profile cylinder
- Pop out function
- Available with 1-, 2-, 3-point cam or rod latch system
- Europrofile cylinder not included in the set, it must be ordered separately
- * Available on request only (please contact with office)

H812 SWINGHANDLE WITH SPANNER BARREL



Available barrel shapes



H812	IP65	Panel thickness	Pivot	Material	Colour	Sticker with logo
0	NO	1 1-1.5 mm	1 ZAMAK	1 PA6GF30	9005 Black - standard	0 Without logo
1	YES	2 1.51-2 mm	2 Brass *	2 PA6GF30 V0 *	RAL On request *	1 Sticker E-L
		3 2.01-2.5 mm				2 Client's logo

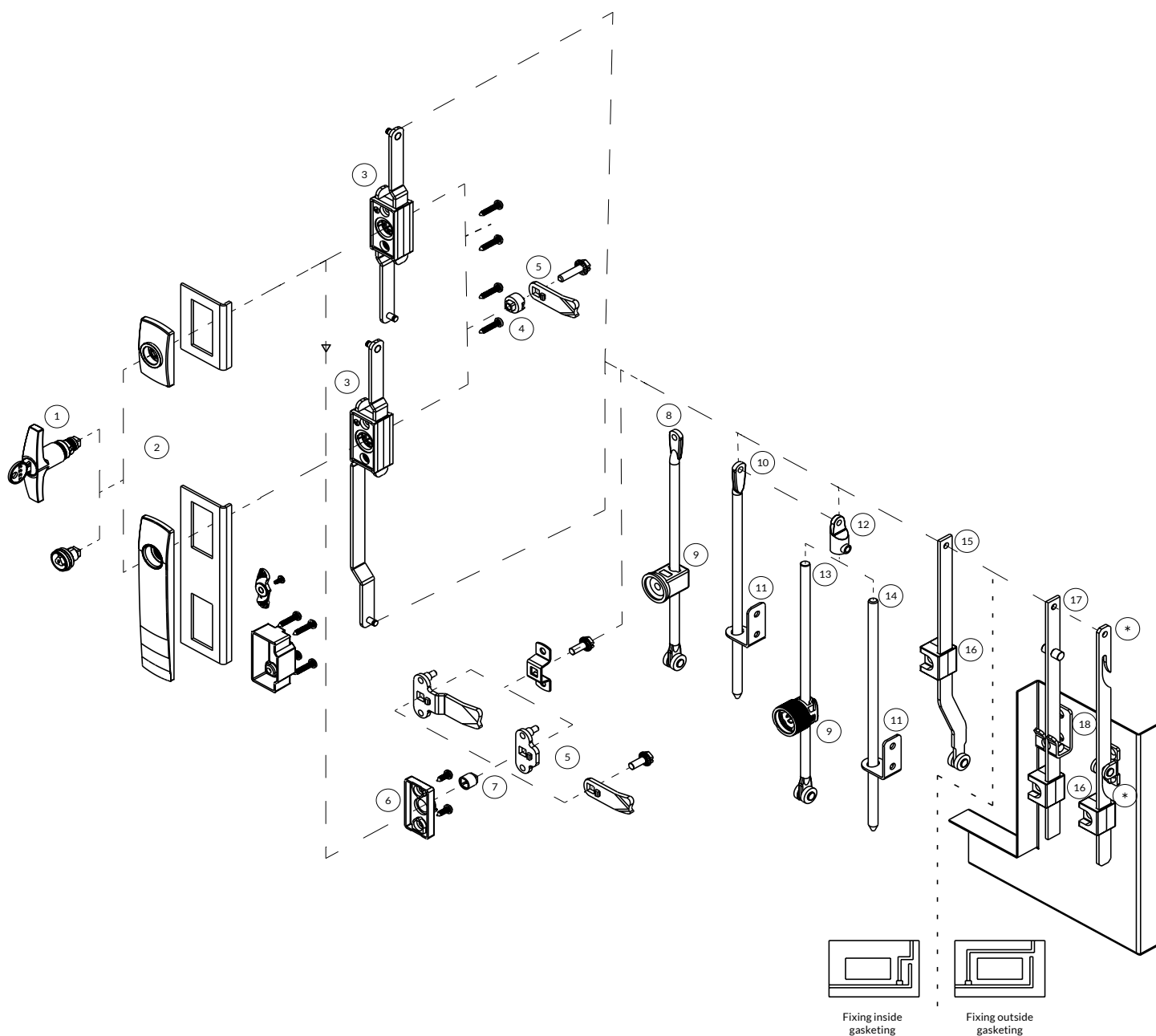
Locking type	Type of spanner barrel	Shapped barrel finish
1 Lock without key	DB3 TM6.5	2A Chrome plated
2 Lock with key only	DB5 TM9	6A Zinc plated
	CM7 FT	7B Nickel plated
	CM8T CF6	8H KTL
	CM6 SPC6	
	TM8	

EXAMPLE: H812 - 0 - 1 - 1 - 1 - 9005 - 1 - 1 - DB3 - 2A

- Custom made logo (sticker, pad printing or logo done during injection moulding phase) - on request only (please contact our office)
- Locking type: spanner barrel
- Pop out function
- Available with 1-, 2-, 3-point cam or rod latch system
- * Available on request only (please contact with office)

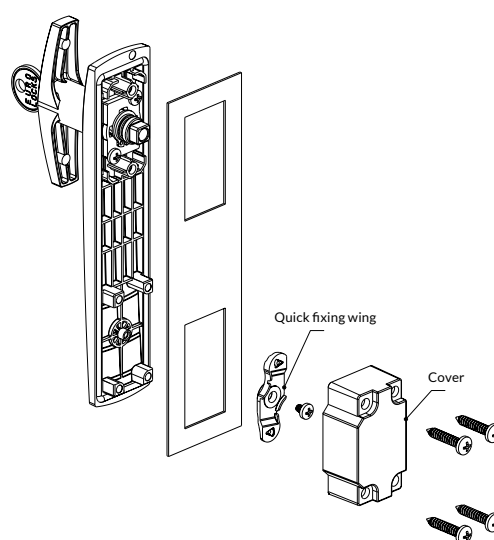
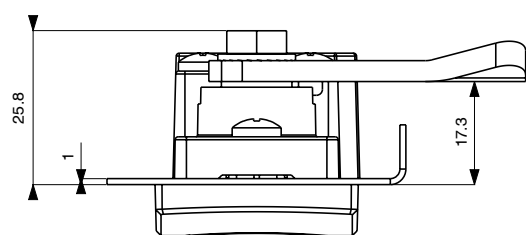
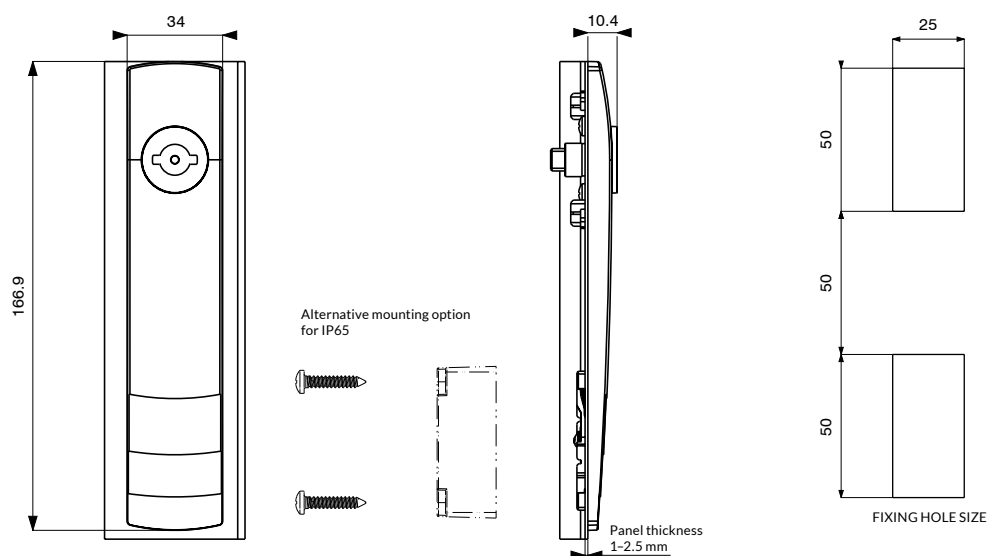


PROGRAM 50×50×50 and 50×25



Ref.	Symbol	Description	Page
1, 2	H808, H807, H805, H802, H405, H407	Escutcheons with spanner barrel, T-handle	14-18
3, 4, 6, 7	W107, W204, P3152, P3150, P3149	Accessories for escutcheons	19-20
5	1, 2, 3-point cams	Cams	21-22
8, 10, 13, 14, 15, 17	PR10, PR11, PR3803, PR3612, PR3811, PR3801, PR3813, PR2	Rods	23-25
9, 11, 16, 18	W108-X, W109-X, W178, W102, W187, W147	Accessories for rods	26-28

H807 ESCUTCHEON WITH SPANNER BARREL



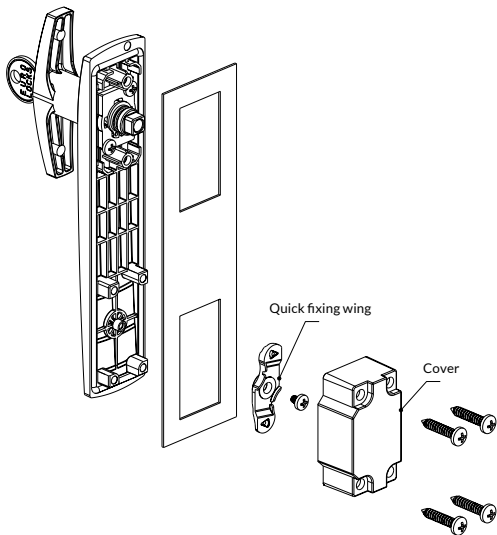
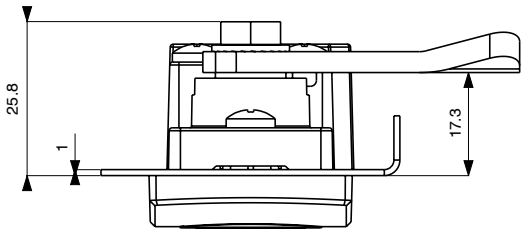
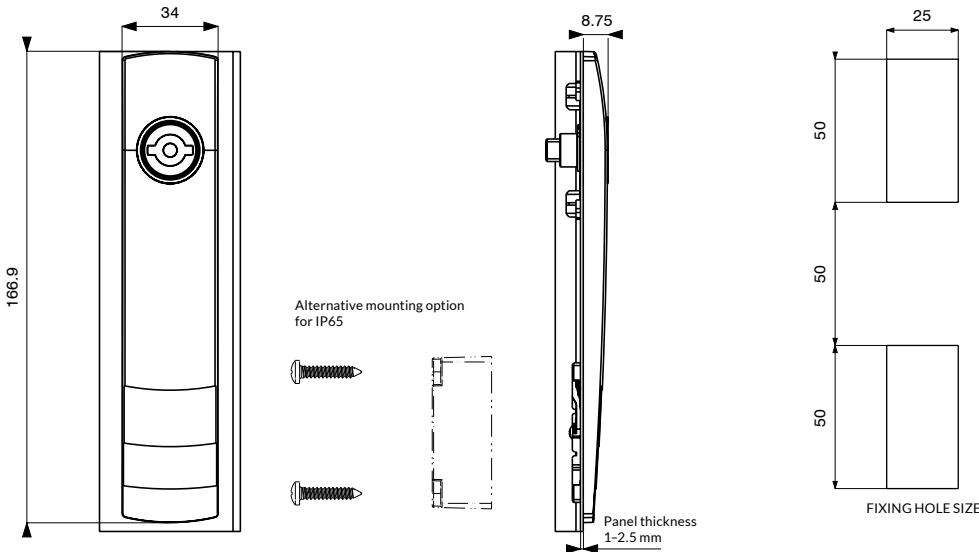
H807	IP65	Type of spanner barrel	Material	Colour	Pad printing logo
0	NO	1 DB5	1 PA6GF30	9005 Black - standard	0 With logo
1	YES		2 PA6GF30 V0 *	RAL On request *	1 Euro-Locks logo
					2 Client's logo *

EXAMPLE: H807 - 1 - 1 - 1 - 9005 - 0

- Custom pad printed logo - on request only (please contact our office)
- Locking type: spanner barrel
- Available with 1-, 2-, 3-point cam or rod latch
- Key extraction is possible only when lock is closed
- IP65 only with cover
- * Available on request only (please contact with office)



H808 ESCUTCHEON WITH SPANNER BARREL

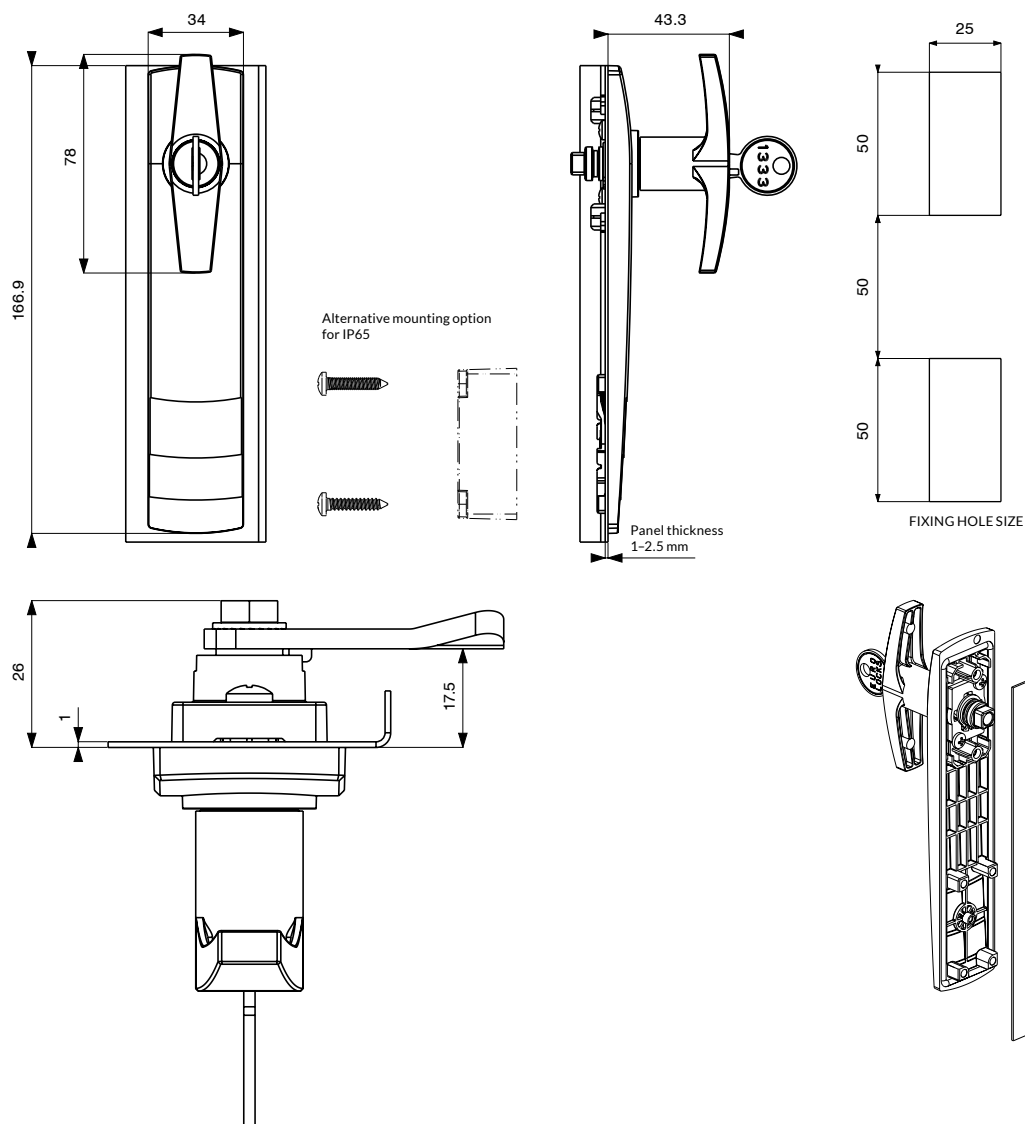


H808	IP65	Type of spanner barrel	Material	Colour	Pad printing logo
0	NO	1 DB5	1 PA6GF30	9005 Black - standard	0 With logo
1	YES		2 PA6GF30 V0 *	RAL On request *	1 Euro-Locks logo
					2 Client's logo *

EXAMPLE: H808 – 1 – 1 – 1 – 9005 – 0

- Custom pad printed logo - on request only (please contact our office)
- Locking type: spanner barrel
- Available with 1-, 2-, 3-point cam or rod latch
- IP65 only with cover
- * Available on request only (please contact with office)

H407 ESCUTCHEON WITH T-HANDLE



H407	IP65	Type of handle	Material	Colour	Pad printing logo	Key series
0	NO	1	1 PA6GF30	9005 Black - standard	0 With logo	R
1	YES		2 PA6GF30 V0 *	RAL On request *	1 Euro-Locks logo	
					2 Client's logo *	

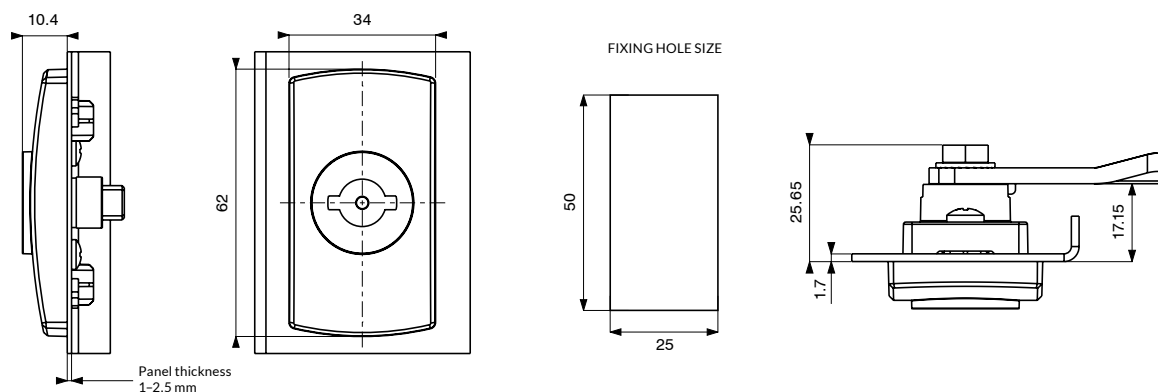
Key's movement	Key's quantity	Key's variant
3 180° clockwise	0 Without keys	KTP One code (possibility to choose with one codes) ** 1333
4 180° anticlockwise	1 One key	KTD XXXX
	2 Two keys	

EXAMPLE: H407 - 1 - 1 - 1 - 9005 - 0 - R - 3 - 2 - KTP1333

- Custom pad printed logo - on request only (please contact our office)
- Locking type: T- handle
- Quantity of combination: 500 (R series)
- Available with 1-, 2-, 3-point cam or rod latch
- IP65 only with cover
- * Available on request only (please contact with office)
- ** Please define the exact key code for each lock when ordering



H802 SHORT ESCUTCHEON WITH SPANNER BARREL

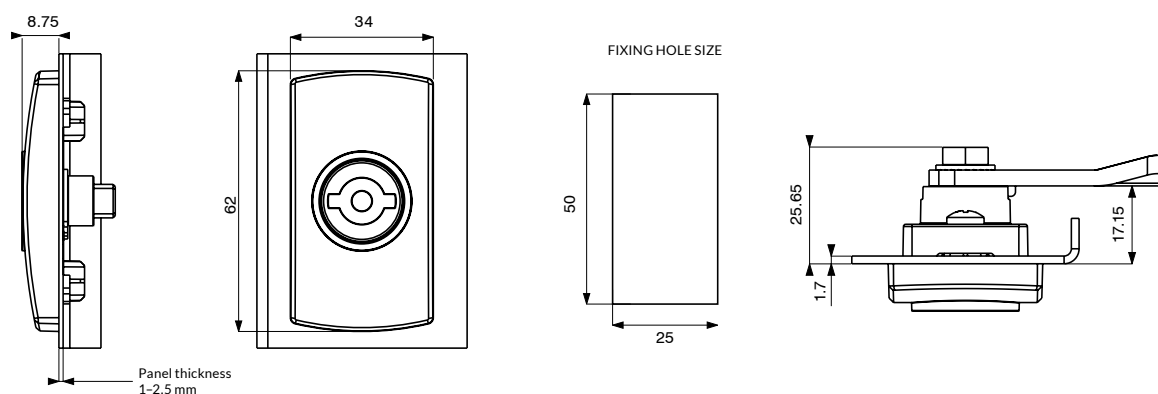


H802	IP65	Type of spanner barrel	Material	Colour	Pad printing logo
0	NO	1 DB5	1 PA6GF30	9005 Black - standard	0 With logo
1	YES		2 PA6GF30 V0 *	RAL On request *	1 Euro-Locks logo
					2 Client's logo *

EXAMPLE: H802 - 1 - 1 - 1 - 9005 - 0

- Custom pad printed logo - on request only (please contact our office)
- Locking type: spanner barrel
- Available with 1-, 2-, 3-point cam or rod latch
- Key extraction is possible only when lock is closed
- * Available on request only (please contact with office)

H805 SHORT ESCUTCHEON WITH SPANNER BARREL

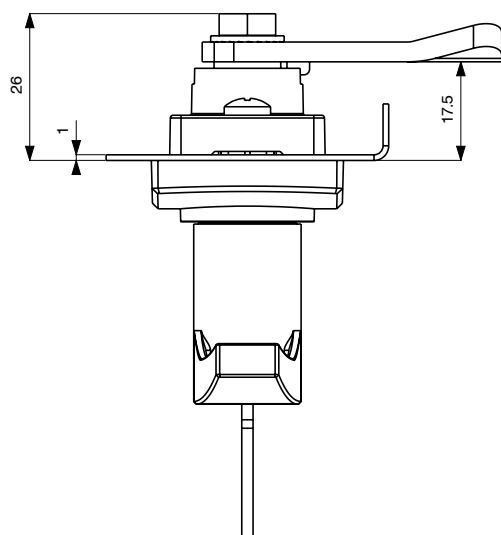
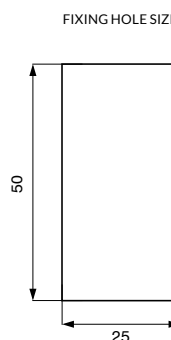
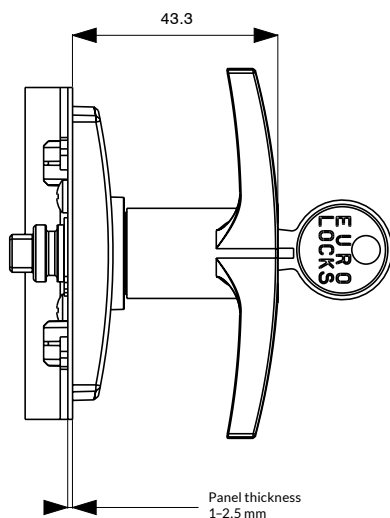
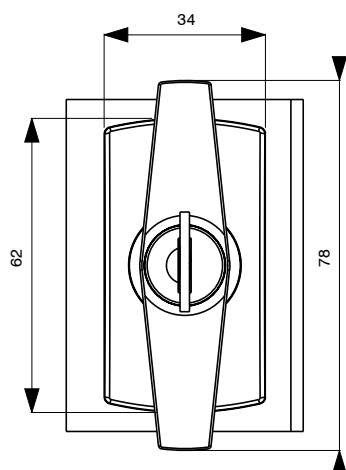


H805	IP65	Type of spanner barrel	Material	Colour	Pad printing logo
0	NO	1 DB5	1 PA6GF30	9005 Black - standard	0 With logo
1	YES		2 PA6GF30 V0 *	RAL On request *	1 Euro-Locks logo
					2 Client's logo *

EXAMPLE: H805 - 1 - 1 - 1 - 9005 - 0

- Custom pad printed logo - on request only (please contact our office)
- Locking type: spanner barrel
- Available with 1-, 2-, 3-point cam or rod latch
- * Available on request only (please contact with office)

H405 SHORT ESCUTCHEON WITH T-HANDLE



H405	IP65	Type of handle	Material	Colour	Pad printing logo	Key series
0	NO	1	PA6GF30	9005 Black - standard	0	R
1	YES		2	RAL On request *	1	
					2	

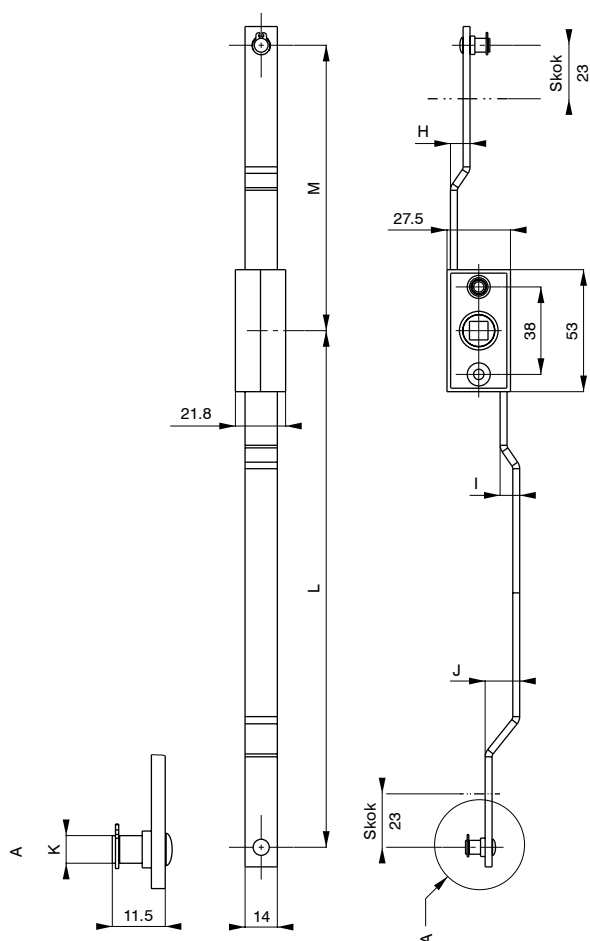
Key's movement	Key's quantity	Key's variant
3	0	KTP
4	1	KTD
	2	

EXAMPLE: H405 - 1 - 1 - 1 - 9005 - 0 - R - 3 - 2 - KTP1333

- Custom pad printed logo - on request only (please contact our office)
- Locking type: T- handle
- Quantity of combination: 500 (R series)
- Available with 1-, 2-, 3-point cam or rod latch
- IP65 only with cover
- * Available on request only (please contact with office)
- ** Please define the exact key code for each lock when ordering



W107 ROD CONTROL



Size [mm]	
H	8.5
I	8.5
J	15
L	224
M	124

Stroke value	
angle	stroke [mm]
135°	23
90°	16

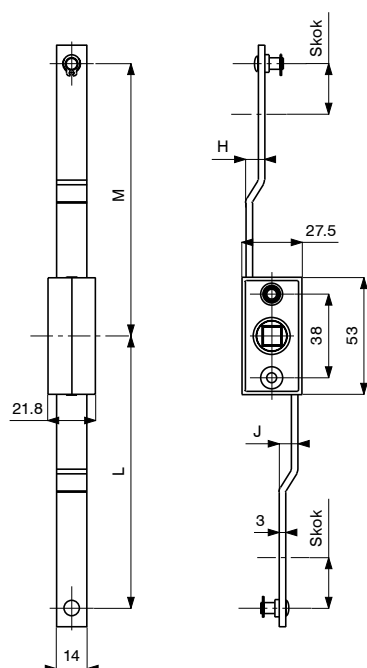
W107	—	K [mm]
1		Ø5
2		Ø6

EXAMPLE: W107 – 1

- Rod control material: ZAMAK
- Rod control finish: zinc plated
- Rod material: steel
- Rod finish: zinc plated



W204 ROD CONTROL



Size [mm]	
H	8.5
J	8.5
L	124
M	124

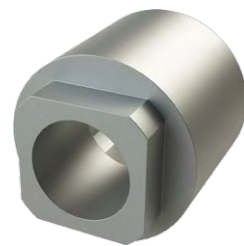
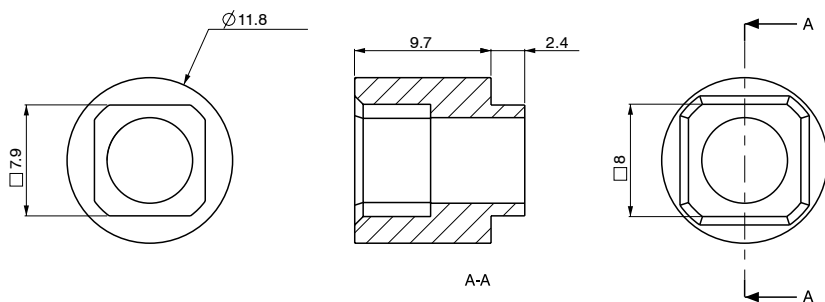
Stroke value	
angle	stroke [mm]
135°	23
90°	16

W204	—	K [mm]
1		Ø5
2		Ø6

EXAMPLE: W204 – 2

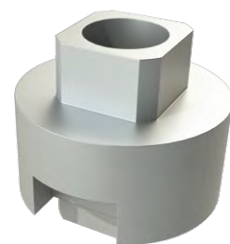
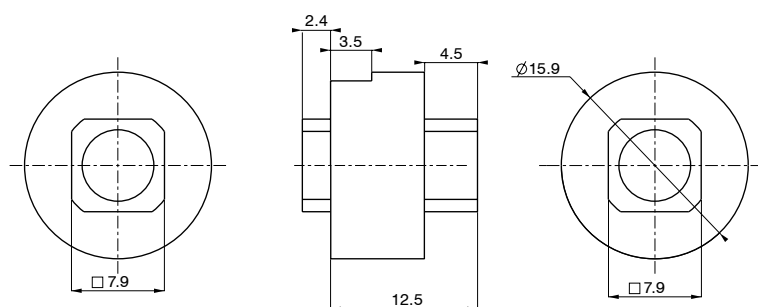


P3149 ADAPTER



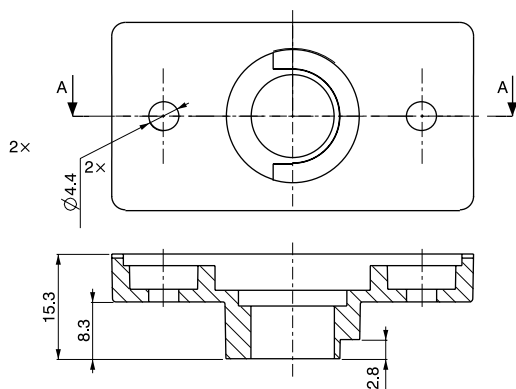
- Material: ZAMAK
- Finish: zinc plated
- Adapter used for handles equipped with 1-, 2- or 3-point cam

P3152 ADAPTER



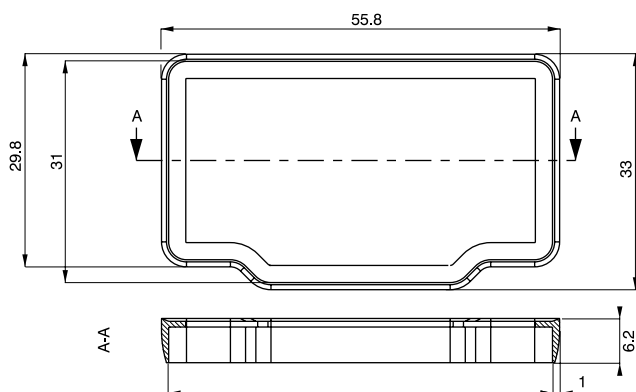
- Material: ZAMAK
- Finish: zinc plated
- Adapter used for handles equipped with rod control and 1-point cam (optionally)

P3150 COVER



- Cover used for cams in a system without a rod control system
- Material: ZAMAK
- Finish: zinc plated

P9002 GASKET



- Gasket used in swinghandles with IP
- Material: EPDM 70



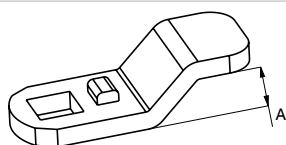
1-POINT CAMS



Fixing hole	Steel dimension [mm]	Type of crank
E	7 17×3,5	

Size A Dim "A" expressed in 1/64 = 0.4 mm	Size B [mm]	Additional bending
00 FLAT		DB
06 2.4 mm		
08 3.2 mm		
12 4.8 mm		
14 5.6 mm		
16 6.4 mm		
18 7.2 mm		
20 8.0 mm		
24 9.5 mm		
26 10.4 mm		
32 12.7 mm		
64 25.4 mm		

Recommended angle 90°, A < 6 recommended angle 45°



ATTENTION:

45° CRANK: min. B = 34 mm without DB DX
min. B = 40 mm with DB DX

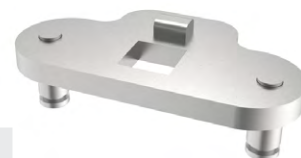
90° CRANK: min. B = 30 mm without DB DX
min. B = 37 mm with DB DX

DX cam in configuration with rod control $C_{min} = 30$ mm

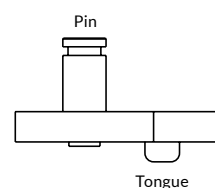
EXAMPLE: E - 7 - 4 - 20 - 45 - DB

- Material: steel
- Finish: zinc plated

2-POINTS CAM



Fixing hole	Pin specification	Shape
E		



EXAMPLE: E - B - 1

- Material: steel
- Finish: zinc plated

3-POINTS CAMS



Fixing hole	Pin specification	Type of crank
	<p>B</p> <p>E</p>	<p>1</p> <p>3</p> <p>4</p> <p>S</p> <p>T</p>

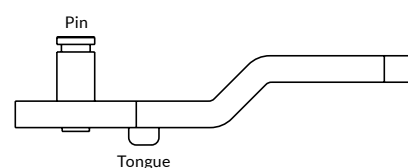
Size A Dim "A" expressed in 1/64 = 0.4 mm	Size B [mm]	Additional bending
00 FLAT		DB
06 2.4 mm		
08 3.2 mm		
12 4.8 mm		
14 5.6 mm		
16 6.4 mm		
18 7.2 mm		
20 8.0 mm		
24 9.5 mm		
26 10.4 mm		
32 12.7 mm		
64 25.4 mm		
Recommended angle 90°, A < 6 recommended angle 45°		DX

ATTENTION:

45° CRANK: min. B = 34 mm without DB DX
min. B = 40 mm with DB DX

90° CRANK: min. B = 30 mm without DB DX
min. B = 37 mm with DB DX

PIN'S ASSEMBLY OPPOSITE TO THE TONGUE



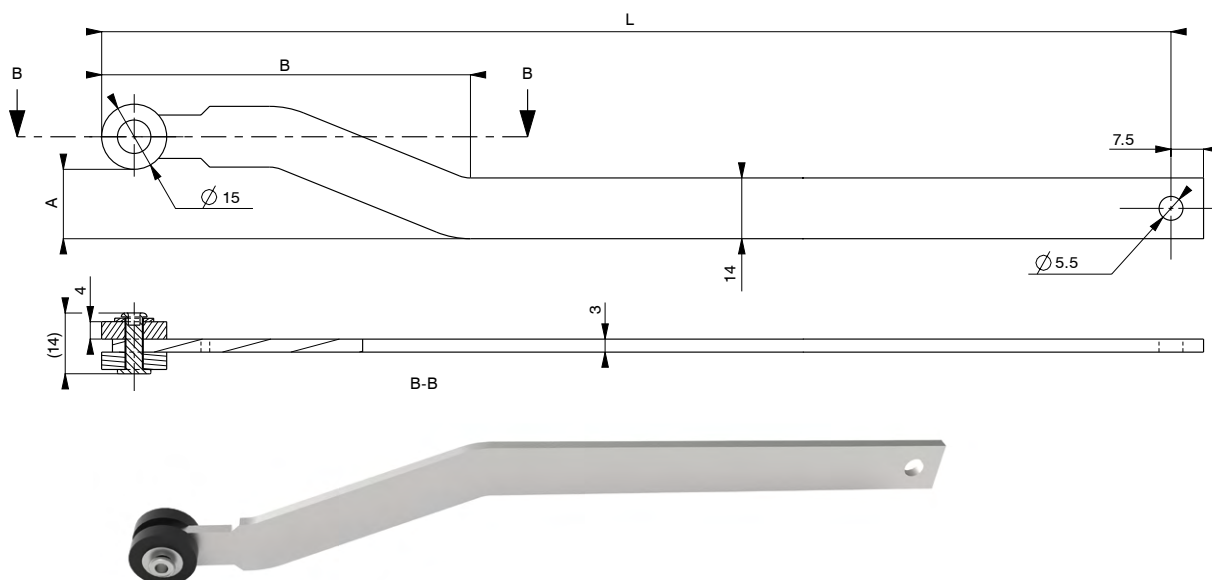
EXAMPLE: E - B - 1 - 00 - 45 - DB

- Material: steel
- Finish: zinc plated

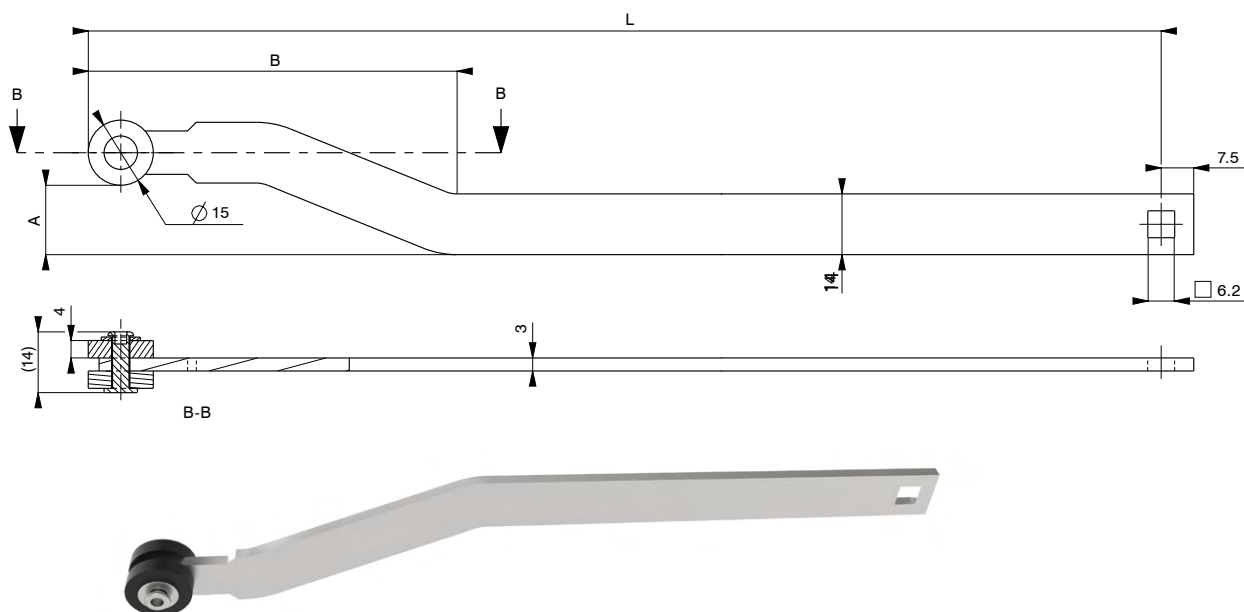


PR1 RODS

PR10-A-B-L



PR11-A-B-L

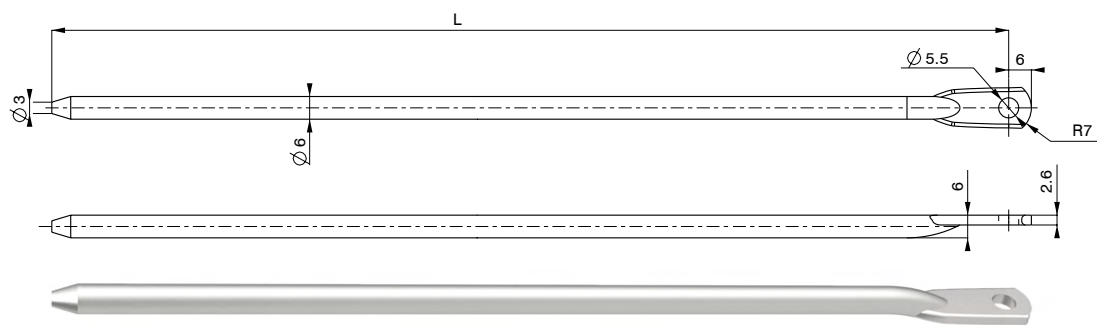


PR1	—	Beginning of the rod	—	A [mm]	—	B [mm]	—	L (length) [mm]
0		Round hole 5.5 mm		16		85		
1		Square hole 6.2 mm		21				
		Other *						

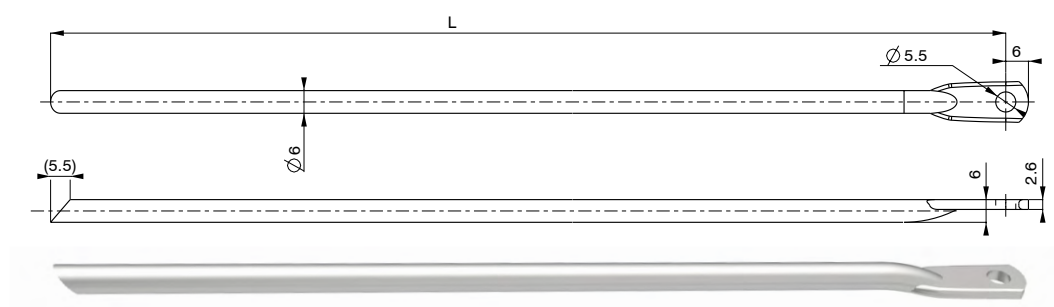
EXAMPLE: PR1 – 0 – 16 – 85 – 100

- Material: steel.
- Finish: zinc plated
- * Other dimensions available on request (please contact with office)

PR36 RODS



PR3611-L



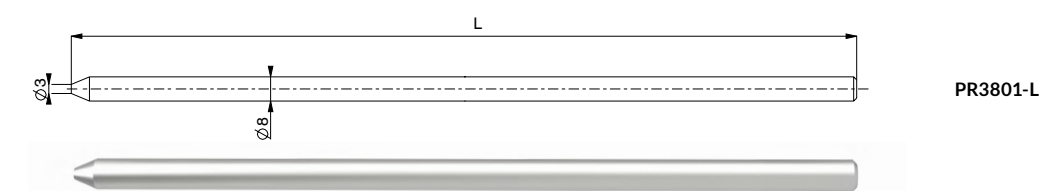
PR3612-L

PR3	Diameter	Beginning of the rod	End of the rod	L (length) [mm]
	6	0 Cut for adapter	1 Cone	
		1 With eye Ø 5.5 mm	2 Cut 45°	

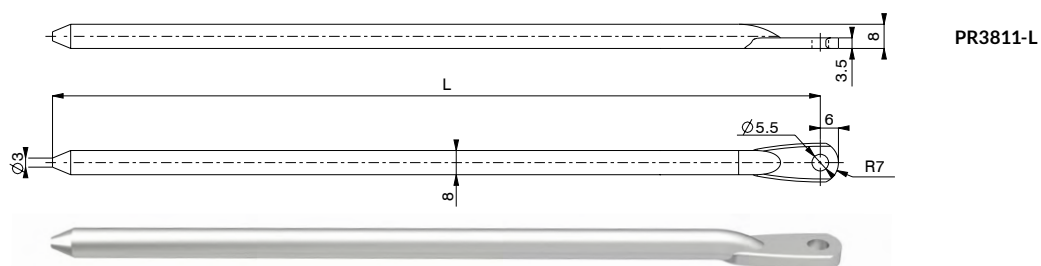
EXAMPLE: PR3 – 6 – 1 – 1 – 100

- Material: steel
- Finish: zinc plated

PR38 RODS



PR3801-L



PR3811-L

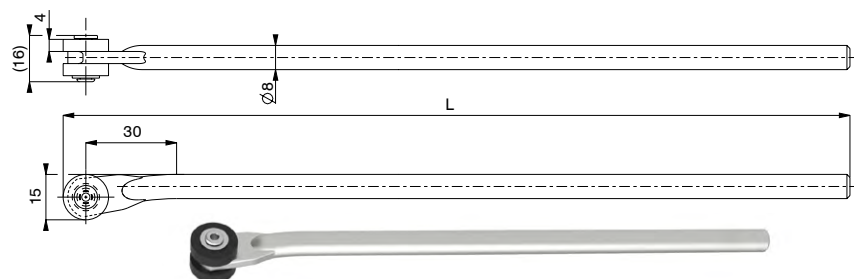
PR3	Diameter	Beginning of the rod	End of the rod	L (length) [mm]
	8	0 Cut for adapter	1 Cone	
		1 With eye Ø 5.5 mm		

EXAMPLE: PR3 – 8 – 0 – 1 – 100

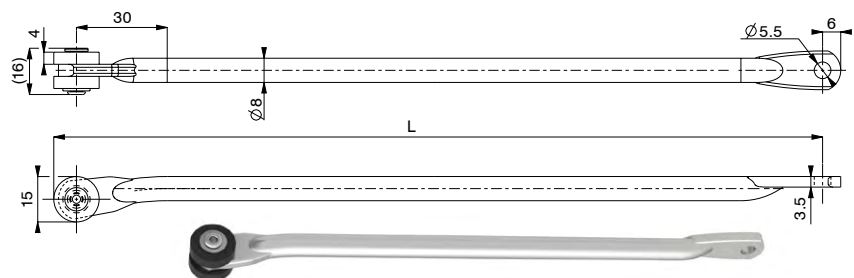
- Material: steel
- Finish: zinc plated



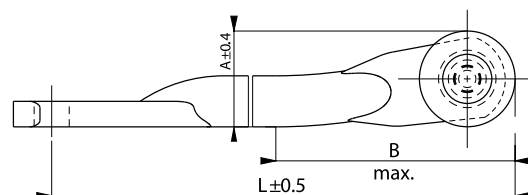
PR38 RODS WITH ROLLER



PR3803-A-B-L



PR3813-A-B-L

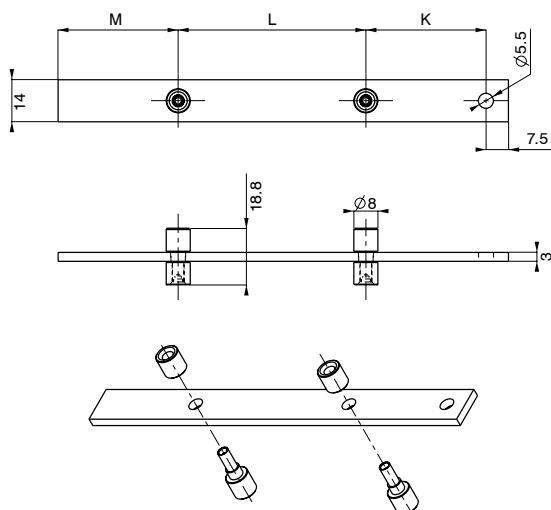


PR3	Diameter	Beginning of the rod	End of the rod	A [mm]	B [mm]	L (length) [mm]
	8	0 Cut for adapter	3 PA rollers - 15 mm	11.5	0	
		1 With eye Ø 5.5 mm		15	37	
				24	47	

EXAMPLE: PR3 - 8 - 0 - 3 - 15 - 37 - 100

- Material: steel
- Finish: zinc plated

PR2 RODS WITH PRESSURE ROLLERS



Recommended

Door height [mm]	M [mm] *	L [mm]	K [mm]
600-1200	75	126.5	-
1200-1600	75	276.5	-
1600-1900	75	425	101.5
1900-2000	75	525	101.5

* no choice of another value

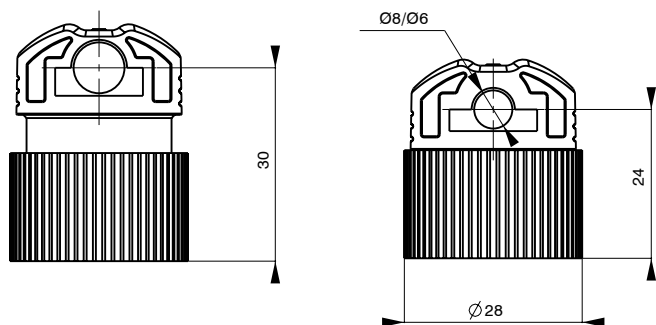


PR2	M [mm]	L [mm]	K [mm]
	Dimension between beginning of the rod and first roller axle	Dimension between axes of rollers	Dimension between roller and rod's fixing hole

EXAMPLE: PR2 - 75 - 425 - 100

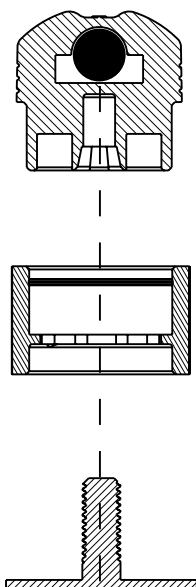
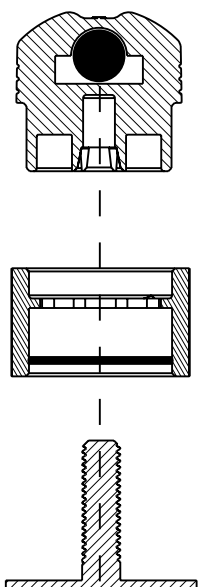
- Please specify parameters M, L, K
- Material of rod: steel
- Finish of rod: zinc plated
- Material of roller: Brass
- The quantity of brass rollers can be changed on request (please contact with office)

W147 ROD GUIDE



Dimension 30 mm

Dimension 24 mm



Mounting method



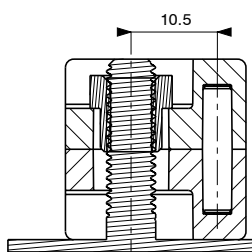
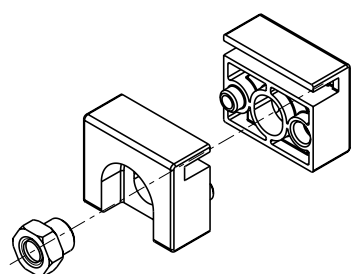
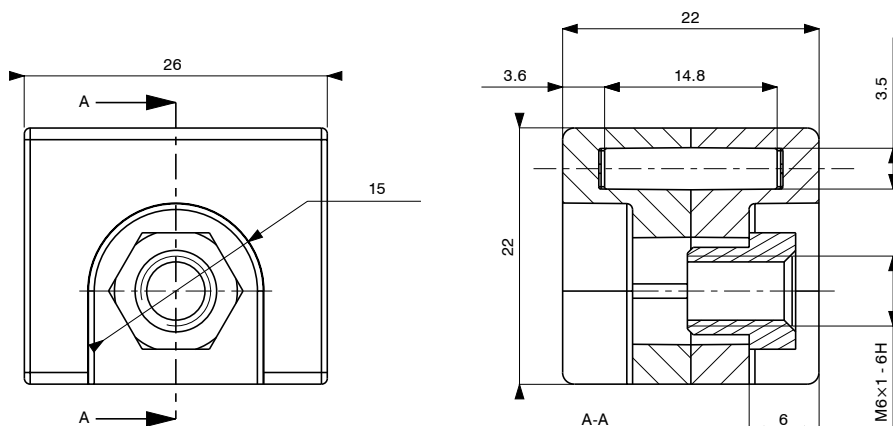
W147	Material	Colour	Rod diameter	
PB	PA6GF30	9005	1	Ø 6
		7035	2	Ø 8
		Other RAL	On request *	

EXAMPLE: W147 – PB – 9005 – 2

- Material: PA6GF30
- One solution for two different distances 24 or 30 mm thanks to the special adjusting ring
- Usable for weld studs M6 :
 - for distance 30 mm suggested length of studed bolt – 22 mm
 - for distance 24 mm suggested length of studed bolt – 16 mm
- **Breaking strength: 160 kg**
- For PR36 and PR38 rods
- * Available on request only (please contact with office)

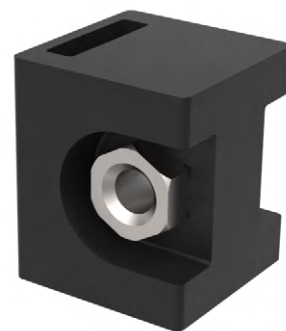


W187 ROD GUIDE

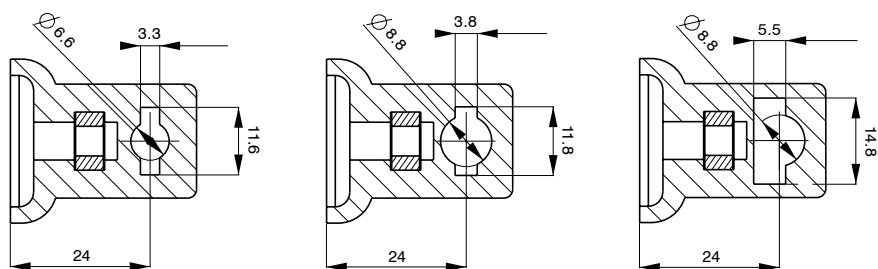


MOUNTING METHOD

- Material: PA6GF30
- For PR1 and PR2 rods only
- Nut M6 included in the set



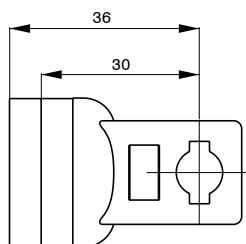
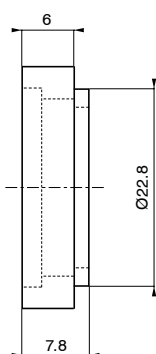
W108 ROD GUIDE



W108-1

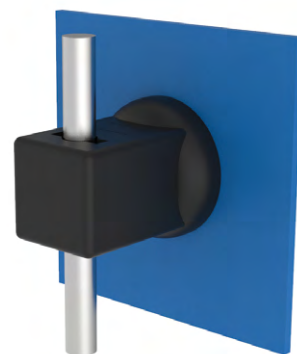
W108-2

W108-3

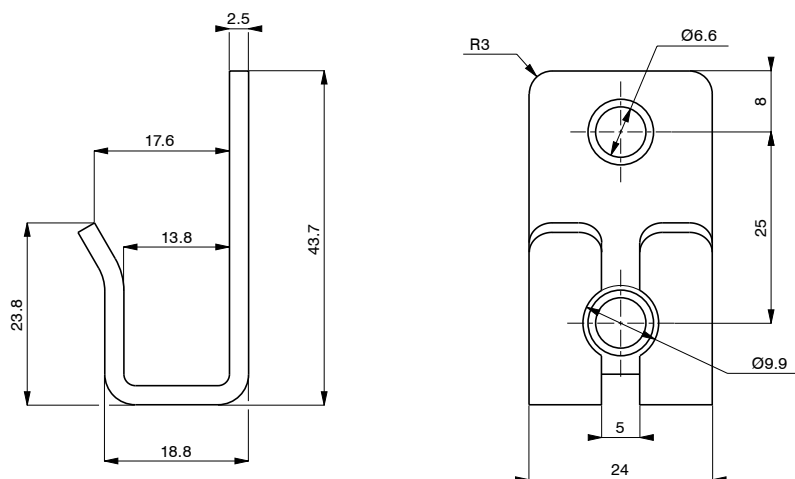


For rod guide is possible to adjust the distance W104, from the sheet to the rod

- Material: PA6GF30
- Rod guide W108-1 for rods PR36
- W108-2 for rods PR38, except PR3813
- W108-3 for rods PR3813
- Usable for weld studs M6

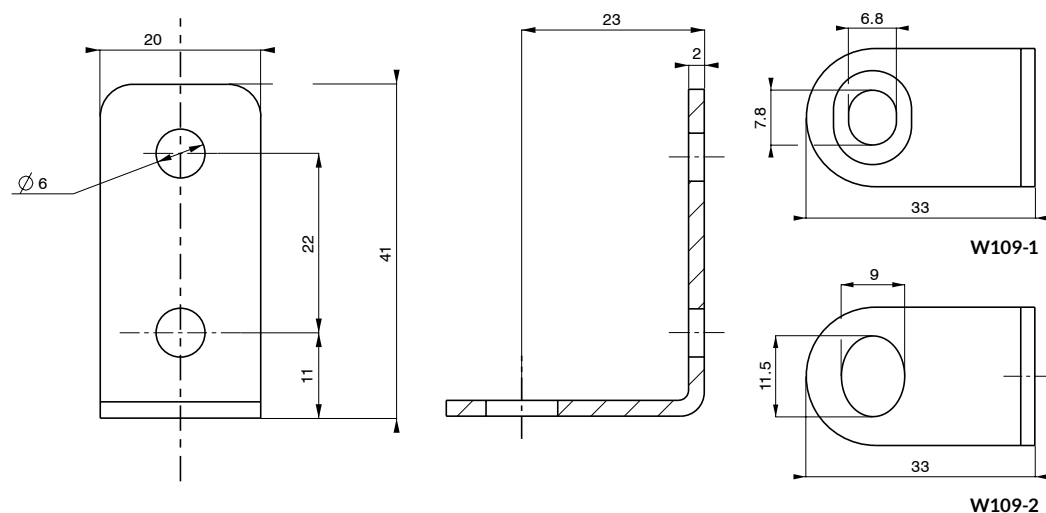


W102 ROD CATCH



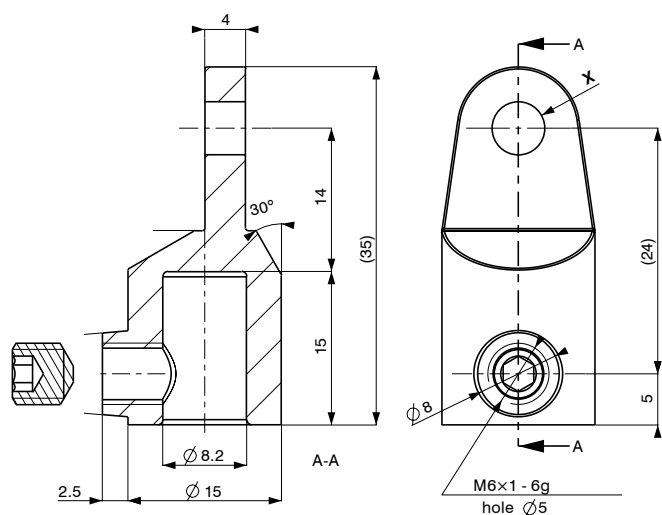
- Material: steel
- Finish: zinc plated
- For rod PR2

W109 ROD GUIDE



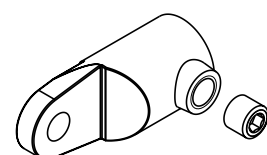
- Material: steel
- Finish: zinc plated
- Rod guide W109-1 for rods PR36, W109-2 for rods PR38, except PR3813

W178 ADAPTER



W178	Pin hole diameter X	Rod diameter
1	Ø 5.2	1 Ø 8
2	Ø 6.2	2 Ø 6

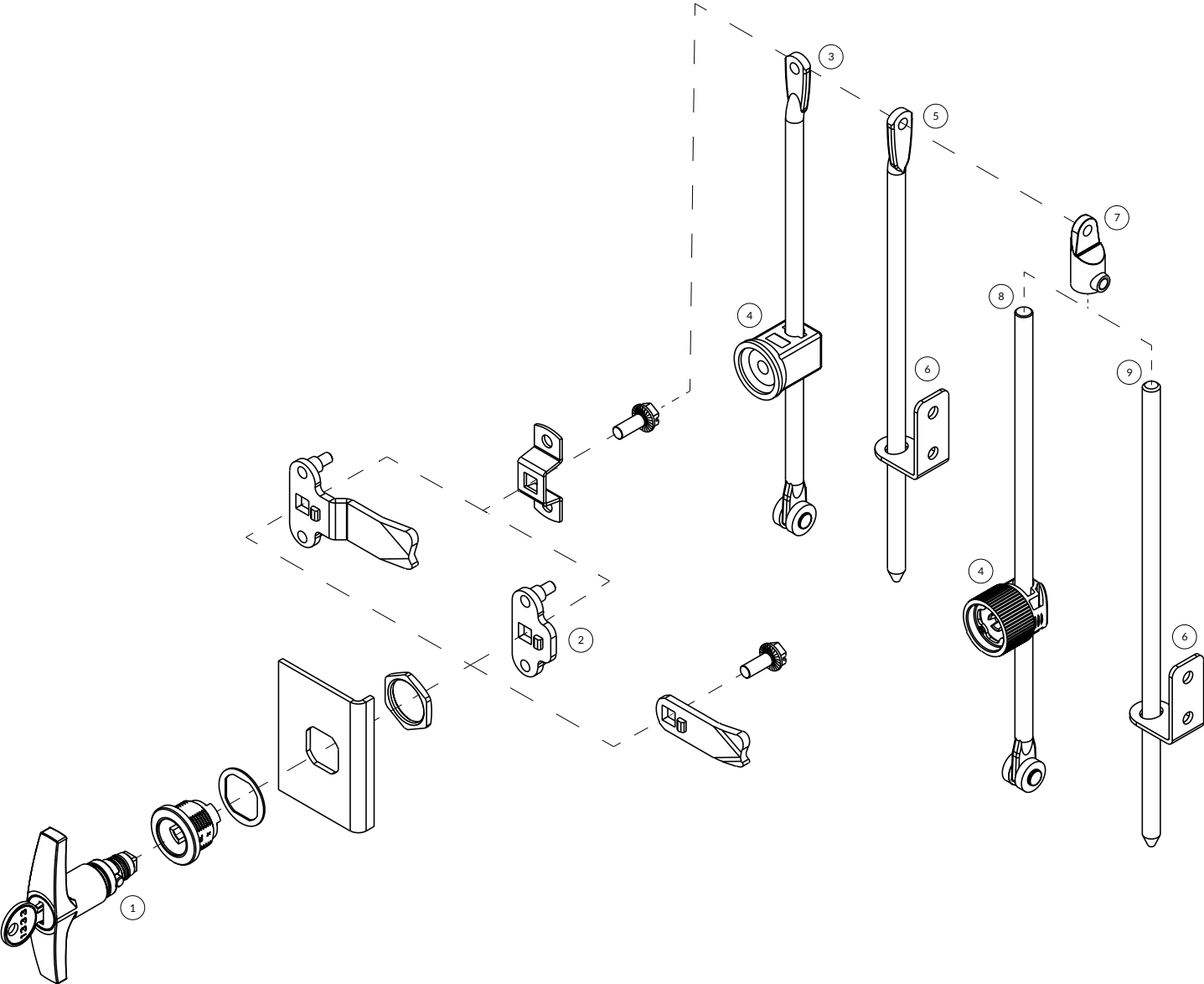
EXAMPLE: W178 - 1 - 1



- Material: ZAMAK
- Finish: zinc plated
- Dimension X=5.2 mm or 6.2 mm
- Screw included in the set, packed separately

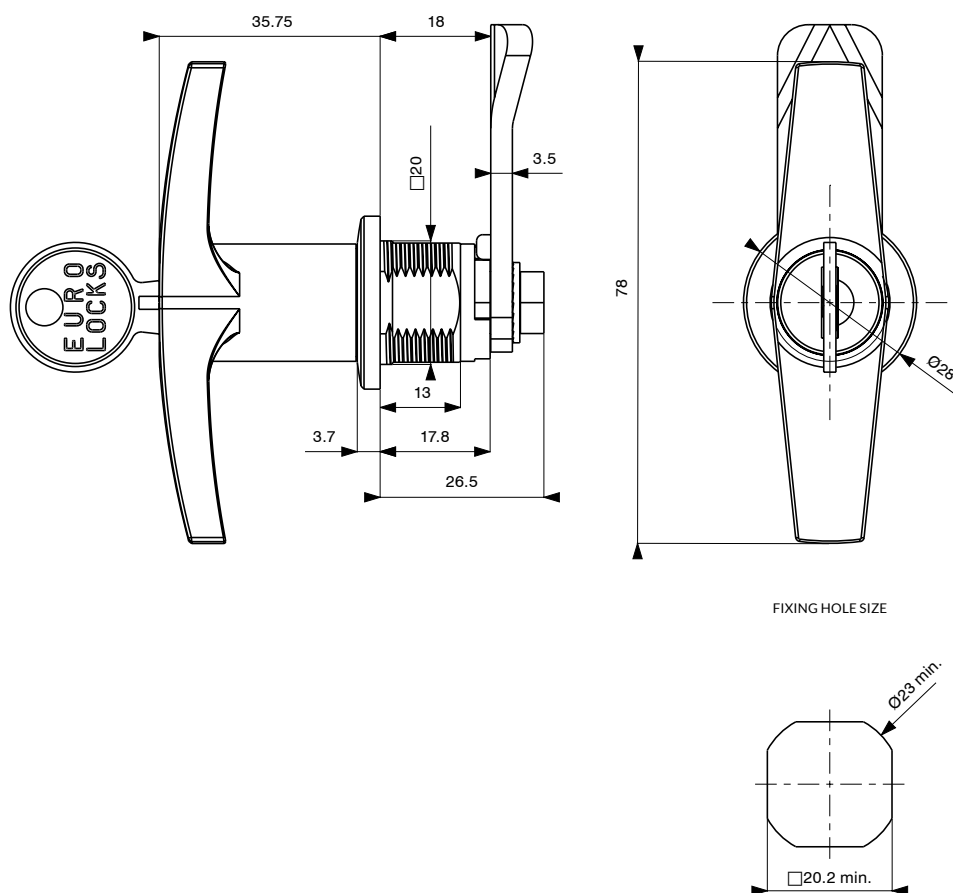


PROGRAM Ø 23×20



Ref.	Symbol	Description	Page
1	H406	T-handle	30
2	1, 2, 3-point cams	Cams	21-22
4, 6	W108-X, W109-X, W178, W147	Accessories for rods	26-28
3, 5, 8, 9	PR3803, PR3612, PR3811, PR3801, PR3813	Rods	23-25

H406 T-HANDLE



H406	System master	T-handles movement	Optional finish	Key's movement
0	Without	1 90° clockwise	1B Powder coating	3 180° clockwise
		2 90° anticlockwise	2A Chrome plated	4 180° anticlockwise
			7 Nickel plated	
			8H KTL	

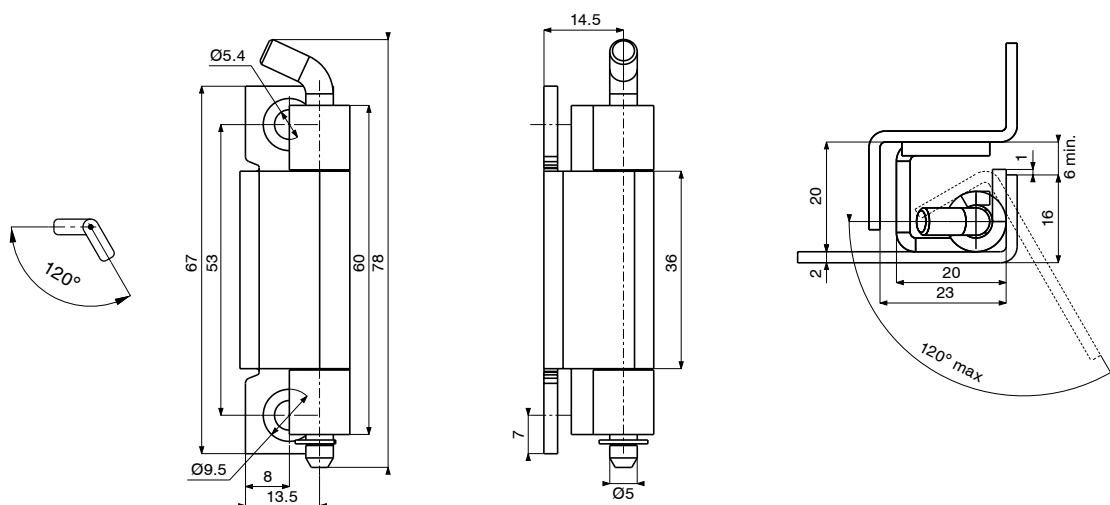
Key's quantity	Key's variant
0 Without keys	KTP One code (possibility to choose with one codes) * 1333
1 One key	KTD XXXX
2 Two keys	

EXAMPLE: H406 – 0 – 1 – 1B – 3 – 2 – KTP1333

- Material: ZAMAK
- Available with 1-, 2- or 3-point cam
- Quantity of combinations: 500 (R series)
- * Please define the exact key code for each lock when ordering

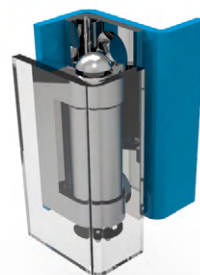
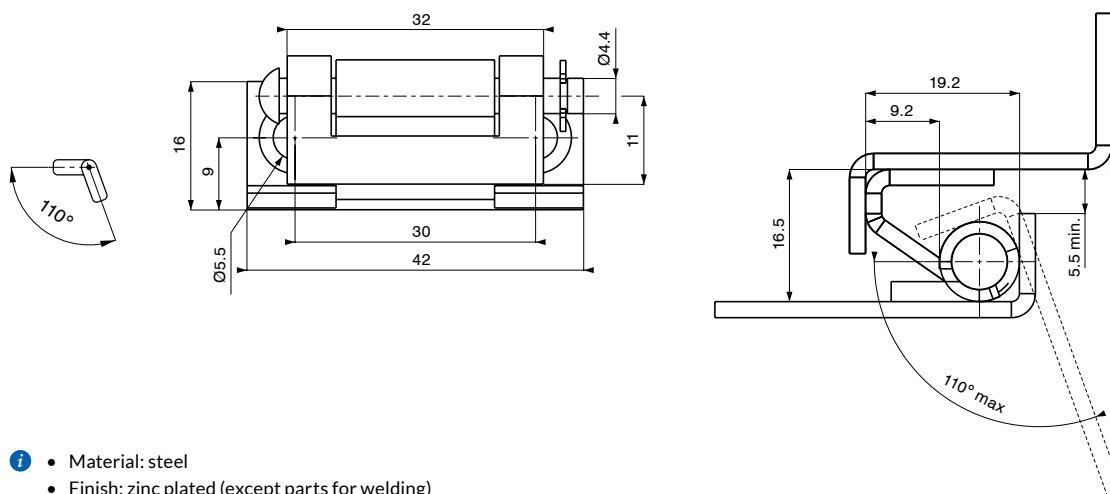


Z100 HINGE



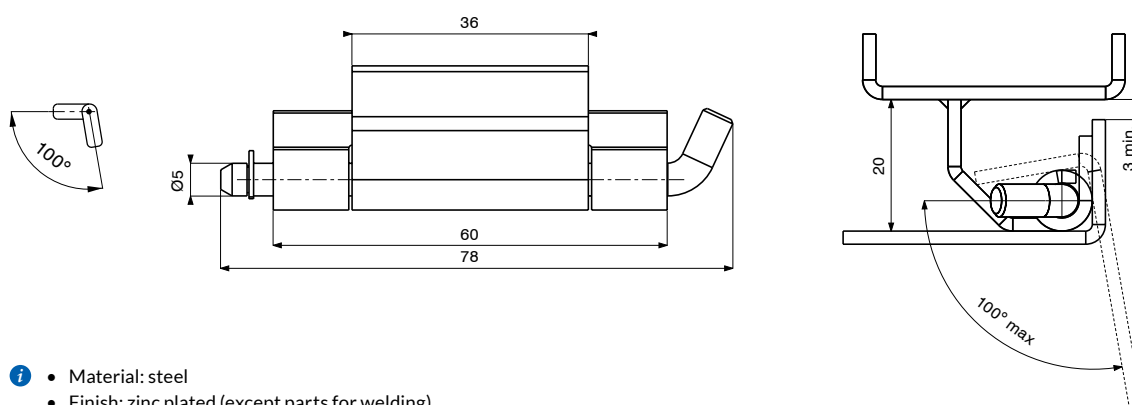
- Material: steel
- Finish: zinc plated (except parts for welding)

Z101 HINGE



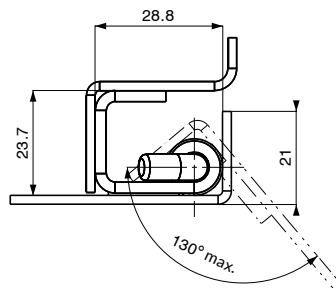
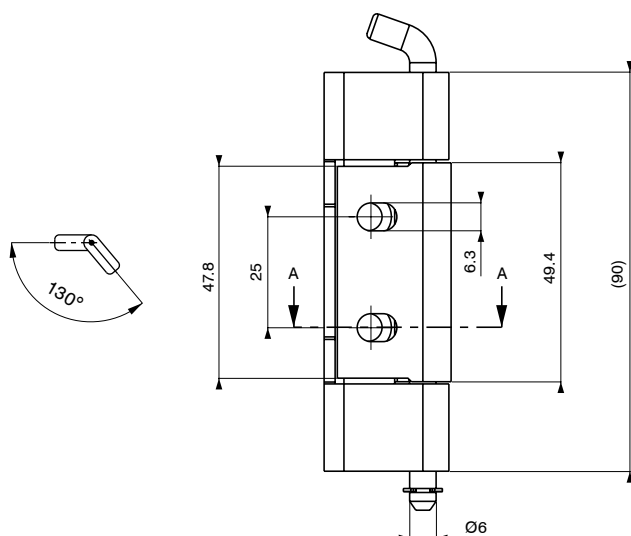
- Material: steel
- Finish: zinc plated (except parts for welding)

Z102 HINGE



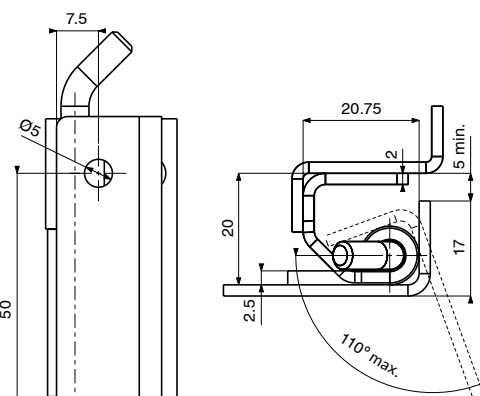
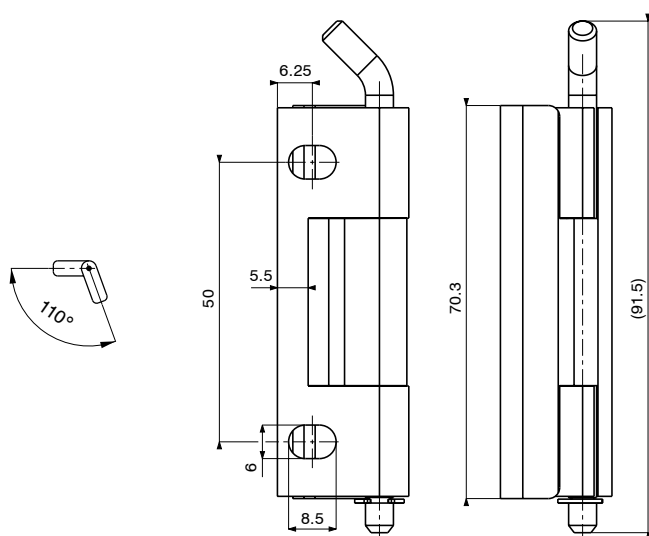
- Material: steel
- Finish: zinc plated (except parts for welding)

Z106 HINGE



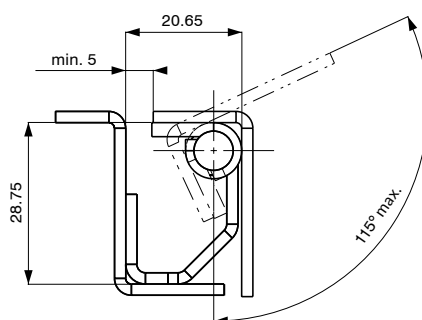
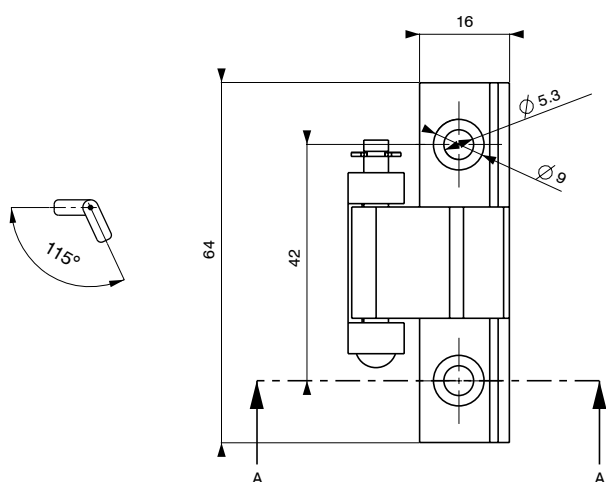
- Material: steel
- Finish: zinc plated, Magnelis® zm120

Z132 HINGE



- Material: steel
- Finish: zinc plated

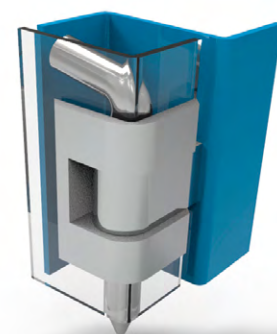
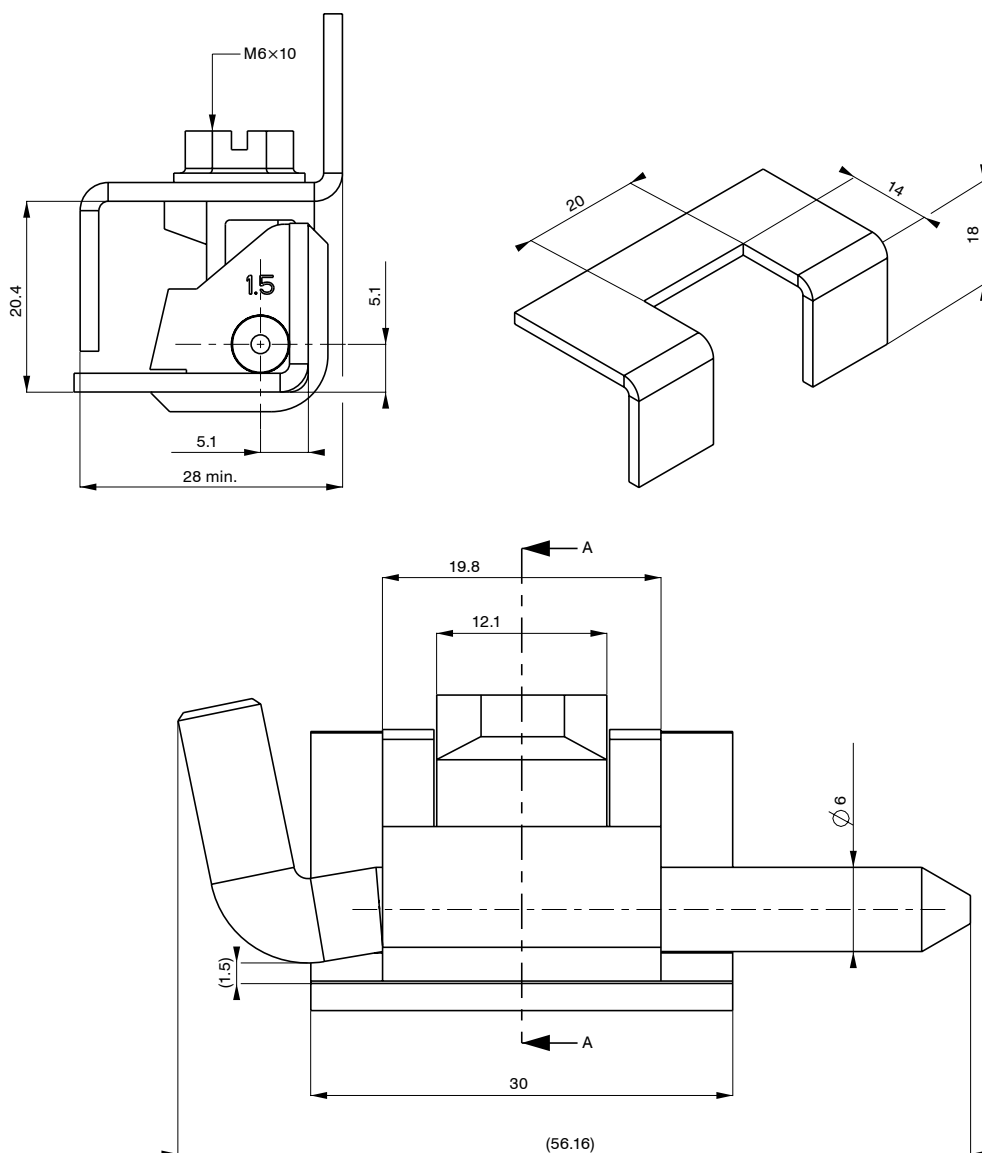
Z141 HINGE



- Material: steel
- Finish: zinc plated, Magnelis® zm120



Z200 HINGE

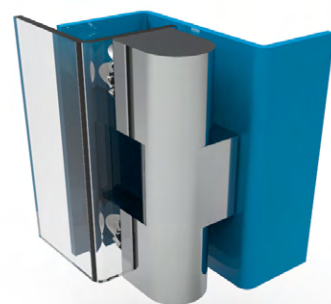
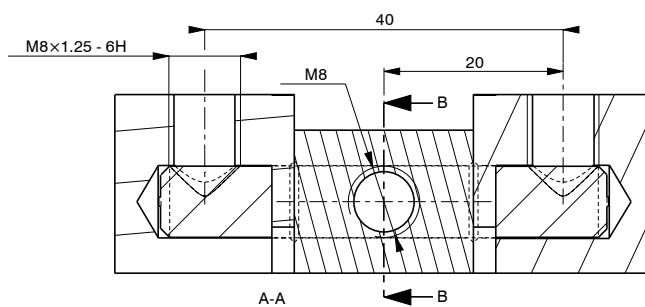
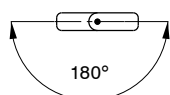
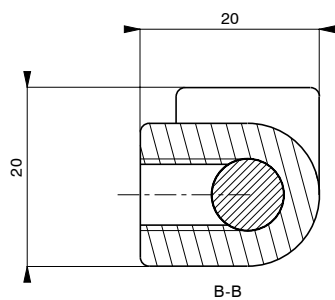


Z200	Material	Optional finish	Panel thickness	Type of pin
ZB	ZAMAK	7B Nickel plated	1 0.8-1.2 mm	1
		2A Chrome plated	2 1.5-2 mm	2
		8H KTL		
		XXXX Powder coating		
		6A Zinc plated		

EXAMPLE: Z200 – ZB – 7 – 1 – 1

- Material of bolt: steel
- Finish of bolt: zinc plated
- For powder coating instead of XXXX enter symbol from RAL table
- Fixing screw included in the set

Z300 HINGE

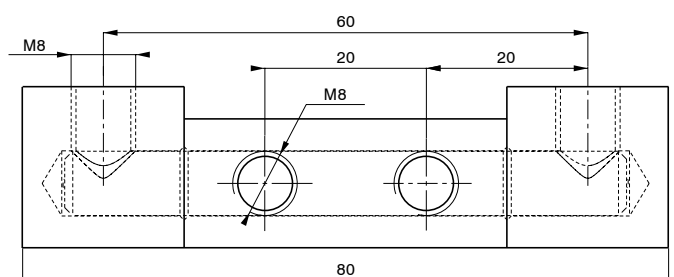
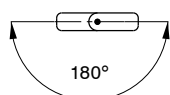
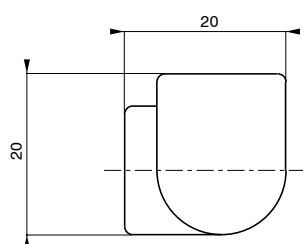


Z300	Material	Optional finish
MA	Brass	7B Nickel plated
		2A Chrome plated
		2C Satin chrome plated
		6A Zinc plated

EXAMPLE: Z300 – MA – 2A

- Fixing screws and washers included in the set
- Bolt material: stainless steel

Z306 HINGE



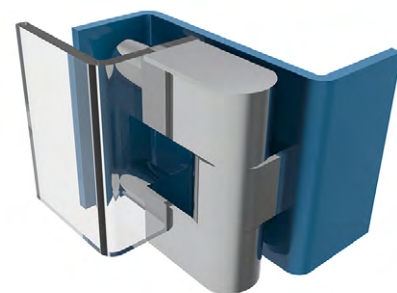
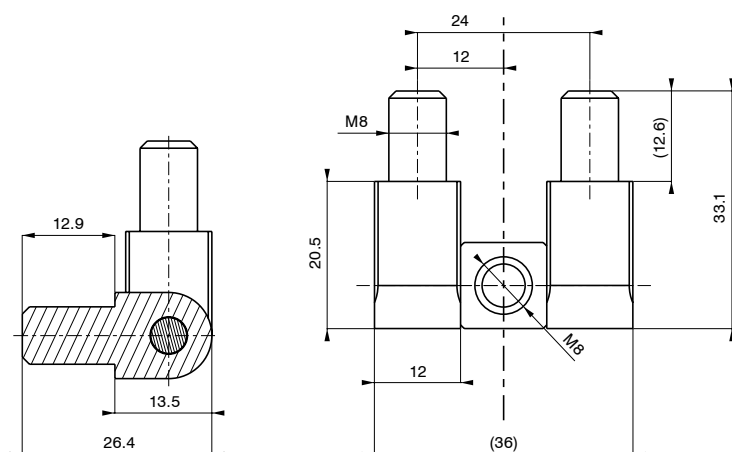
Z306	Material	Optional finish
MA	Brass	7B Nickel plated
		2A Chrome plated
		2C Satin chrome plated
		6A Zinc plated

EXAMPLE: Z306 – MA – 2C

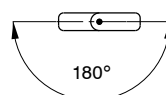
- Fixing screws and washers included in the set
- Bolt material: stainless steel



Z308 HINGE



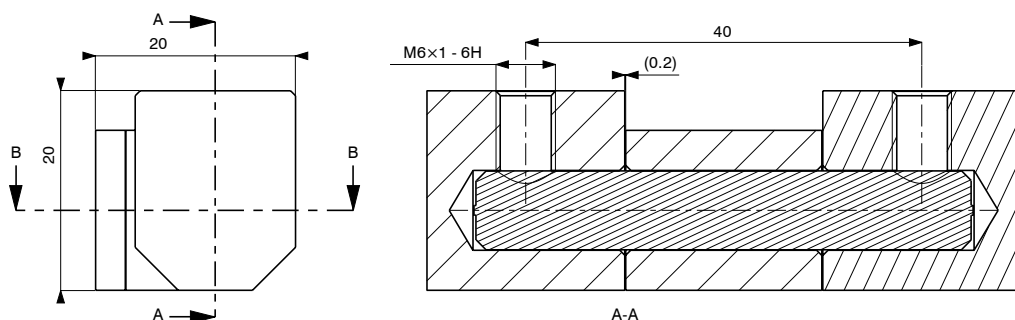
Z308	Material	Optional finish
S	Steel	7B Nickel plated
		2A Chrome plated
		2C Satin chrome plated
		6A Zinc plated



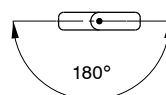
EXAMPLE: Z308 – S – 7B

- Material of bolt: steel
- Finish of bolt: zinc plated

Z318 HINGE



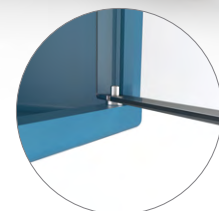
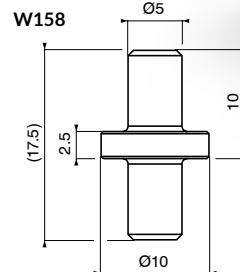
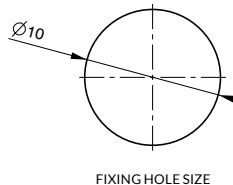
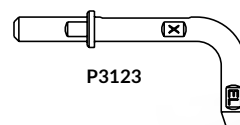
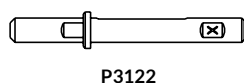
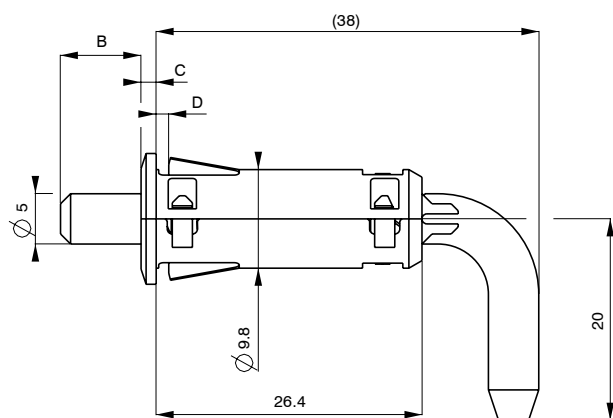
Z318	Material	Optional finish
S	Steel	7B Nickel plated
		2A Chrome plated
		2C Satin chrome plated
		6A Zinc plated
		XXXX Powder coating



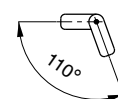
EXAMPLE: Z318 – S – 7B

- Fixing screws and washers included in the set
- For powder coating instead of XXXX enter symbol from RAL table

Z400 HINGE



Z400	Material	Colour	Shape of PIN	Size B and C [mm]	Panel thickness
	PA6	9005 Black - standard	1 Straight	1 B=8 / C=1,5	1 0.8-1.2 mm
		Other RAL On request *	2 Bend	2 B=7 / C=2,5	2 1.2-1.7 mm
					3 1.7-2.2 mm

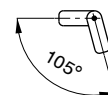
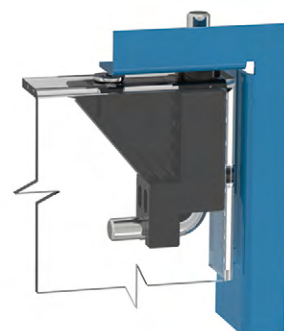
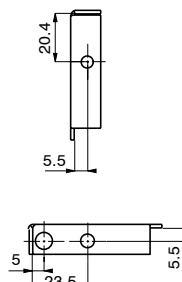
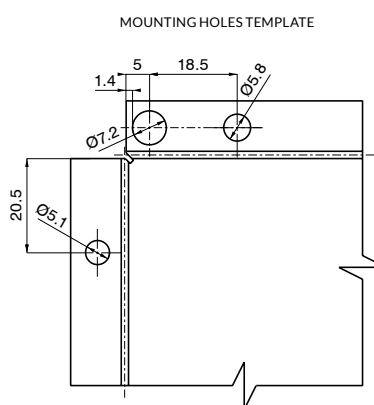
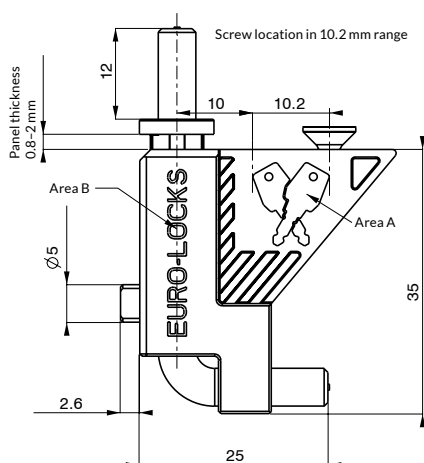


EXAMPLE: Z400 – PA6 – 9005 – 2 – 2 – 2

- Material of bolt: ZAMAK
- Steel pivot W158 can be used instead of bottom hinge.

- Not included in the set of Z400. Available as a separate product
- * Available on request only (please contact with office)

Z403 HINGE



Z403	Colour	Area A	Area B
	9005 Black - standard	0 Without logo	0 Without logo
	Other RAL On request *	1 Euro-Locks logo	1 Euro-Locks logo *
		2 Client's logo *	2 Client's logo *

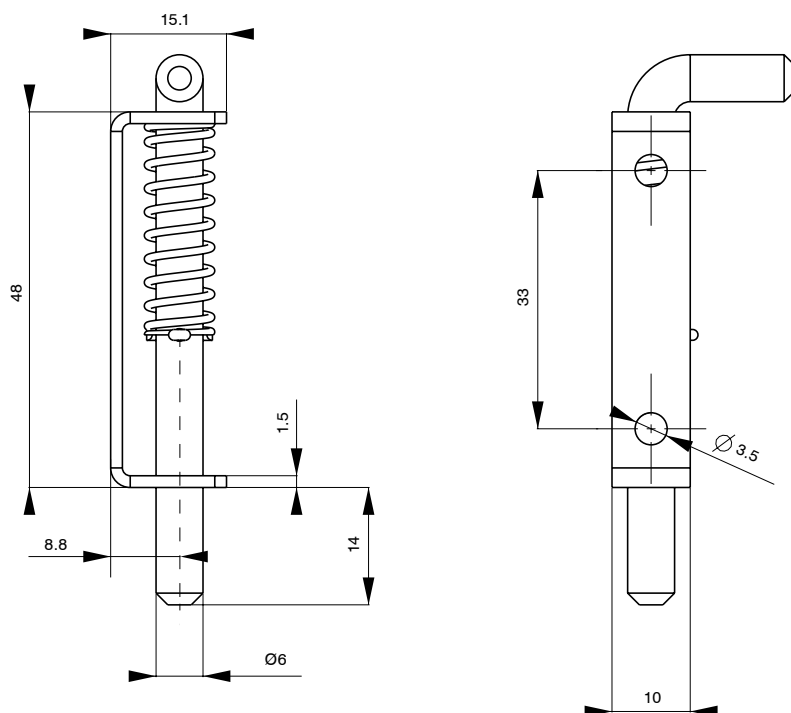
EXAMPLE: Z403 – 9005 – 1 – 0

- Panel thickness range: 0.8-2.0 mm
- One version for LH and RH door
- Quick and stable fixing with guide
- Prepared for additional screw fixing (not included in the set)

- Material of hinge: PA6
- Material of Ø5 mm bolt: zinc plated
- * Available on request only (please contact with office)

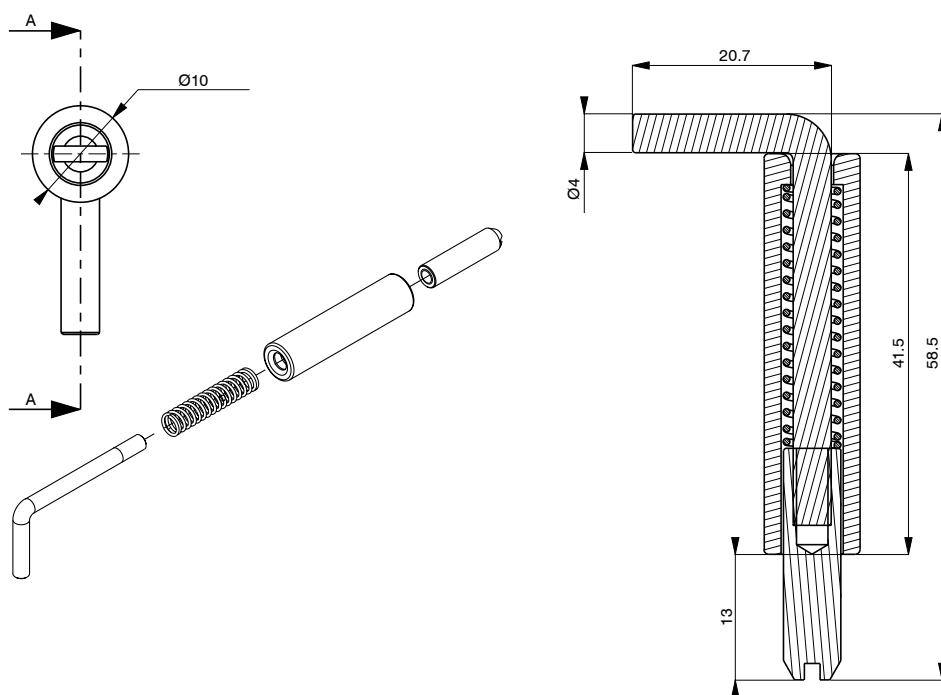


Z408 HINGE

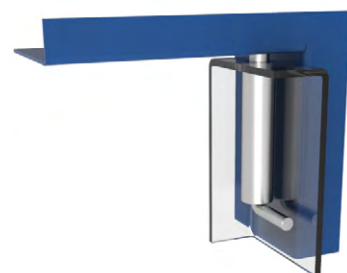


- Material: steel
- Finish: zinc plated

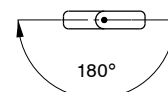
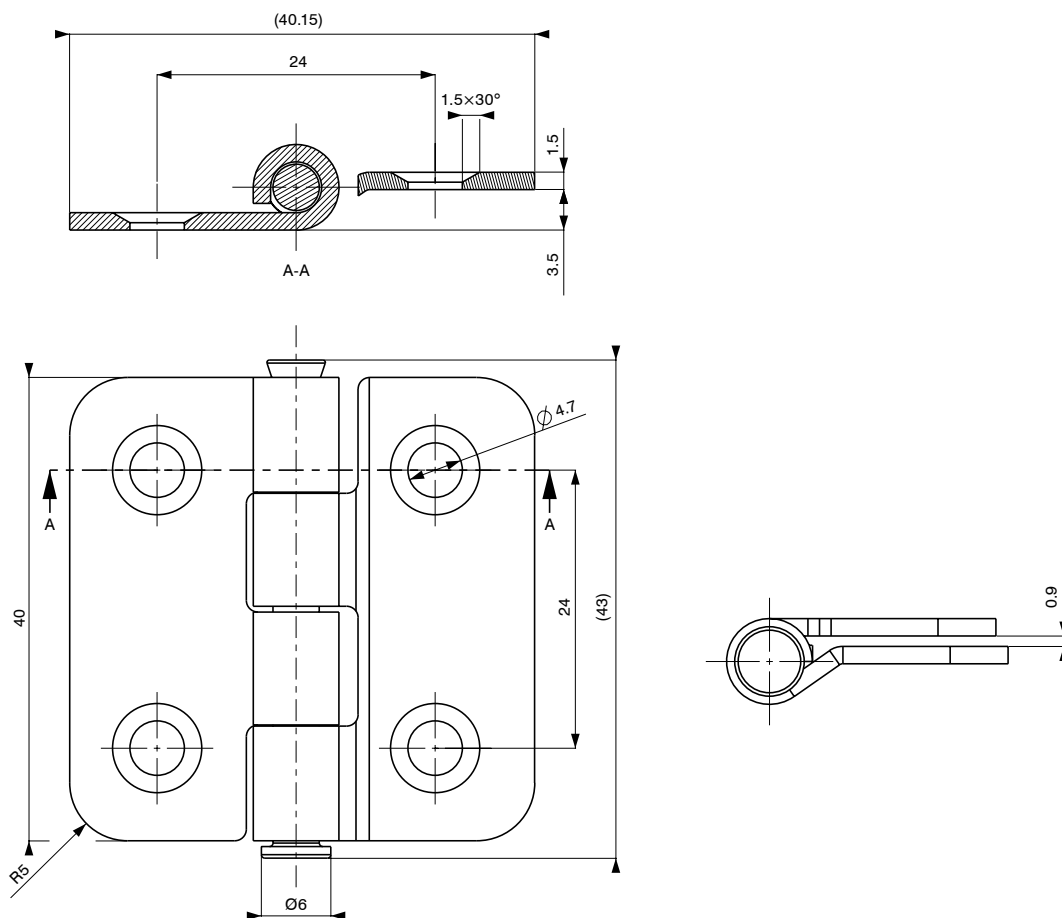
Z406 HINGE



- Pin hinge for welding
- Material: steel
- Spring material: stainless steel
- Finish: zinc plated (except parts for welding)

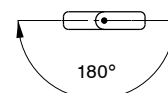
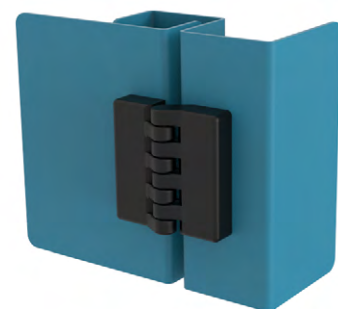
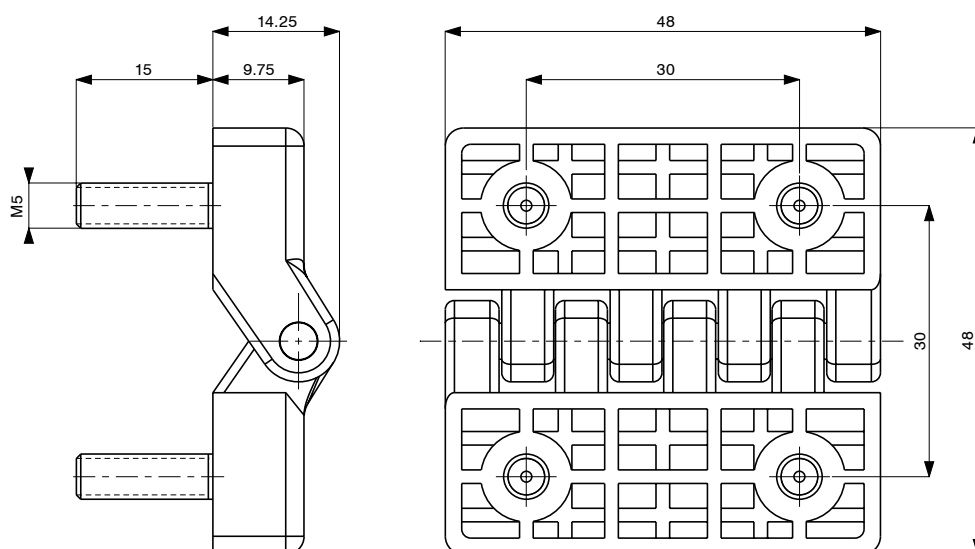


Z526 FLAT HINGE



- Material of hinge: AISI304

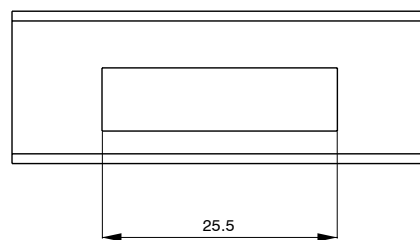
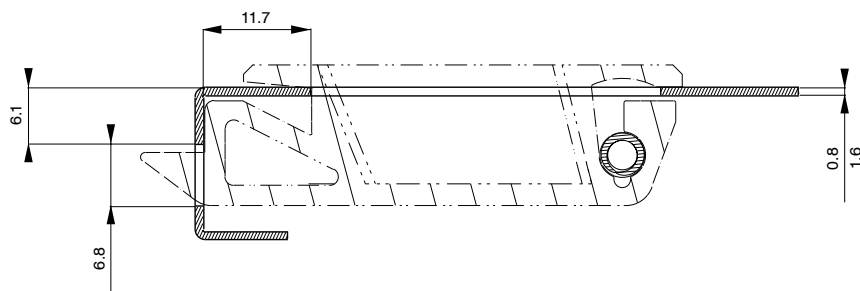
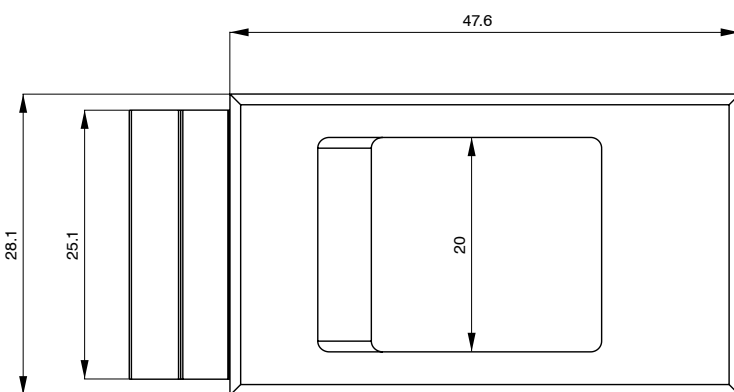
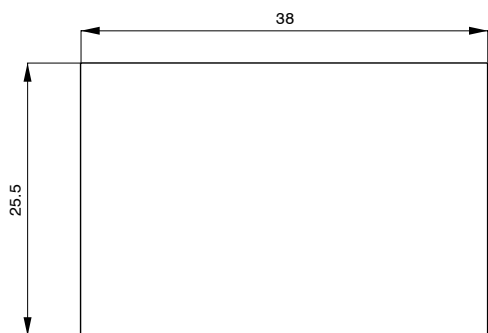
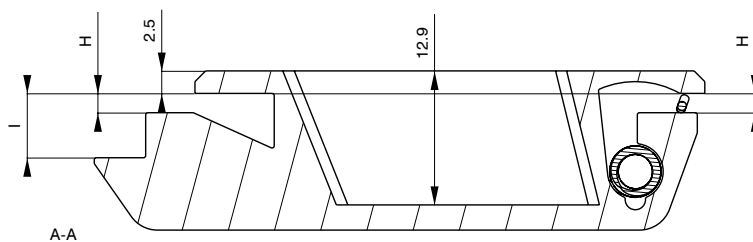
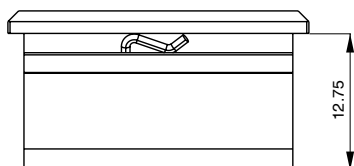
Z509 FLAT HINGE



- Material of hinge: PA6GF30
- Besoted pin hinge
- Different dimension of pins on request only (please contact with office)



H301 SLIDE LATCH

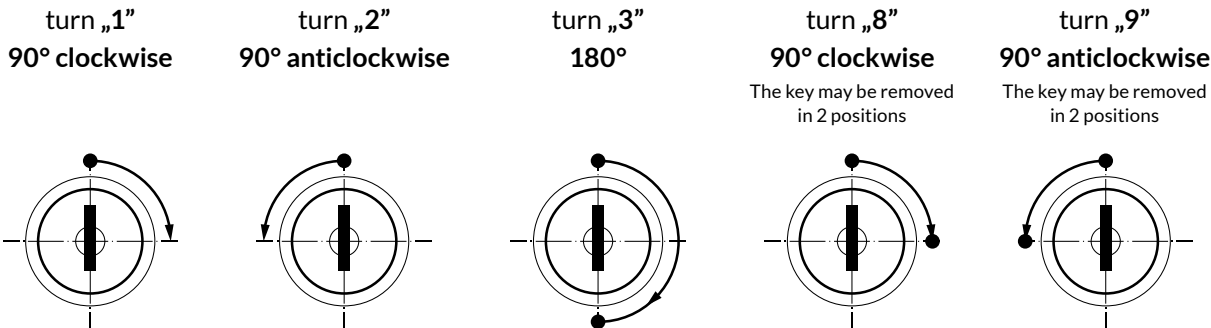
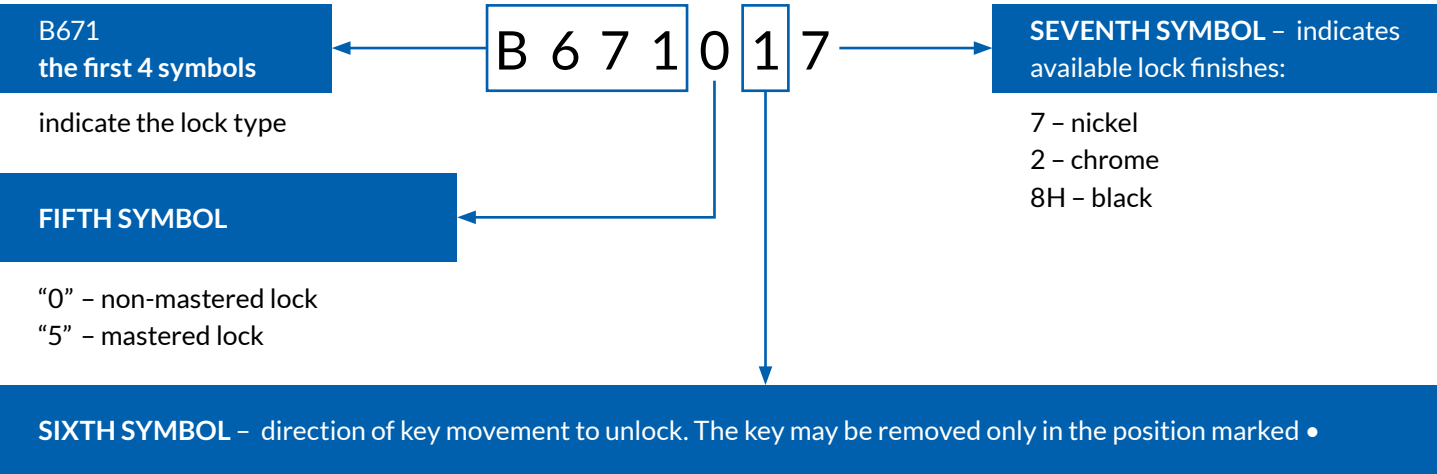


H301	Material	Colour	Size H [mm]	Panel thickness [mm]	Size I [mm]
	PA6	9005 Black - standard	1	1.4	0.8-1.1
		Other RAL On request *	2	1.8	1.2-1.6

EXAMPLE: H301 – PA6 – 9005 – 2 – 2

- Material: PA6
- Colour: Black
- The dimension H and I can be changed on request (please contact with office)
- * Available on request only (please contact with office)

Explanation of product code

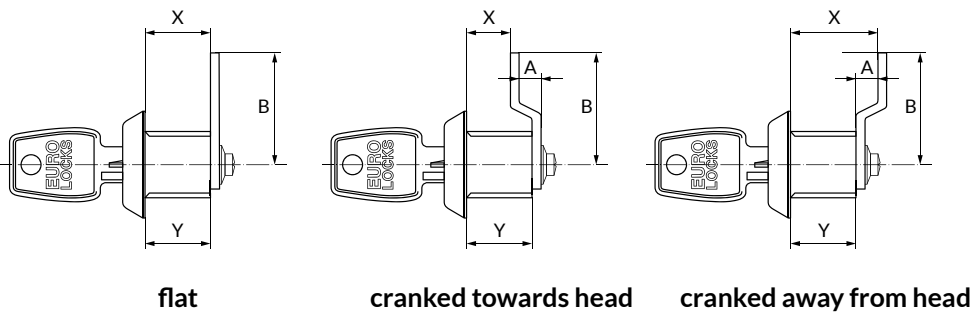


Abbreviations used in the product description

- KTP** All locks have the same key number.
- KTD** All locks have different key numbers.
- KTDS** The locks are built in the "set" number groups. Each set has a different key number and any amount of locks and keys within a given set.
In the above abbreviations, the digit on the front is the amount of keys in a set for one lock (for example 2 KTP or 3 KTD).
- MASTER** All locks have different numbers of keys but there is a master key that opens all locks.
- DNOC** Key number is stamped on the barrel front. This assists in obtaining replacement keys if they are lost.
- MILLING** Cut in the lock body, for fixing the lock with a clip instead of a nut. For example (X-02).

Cams

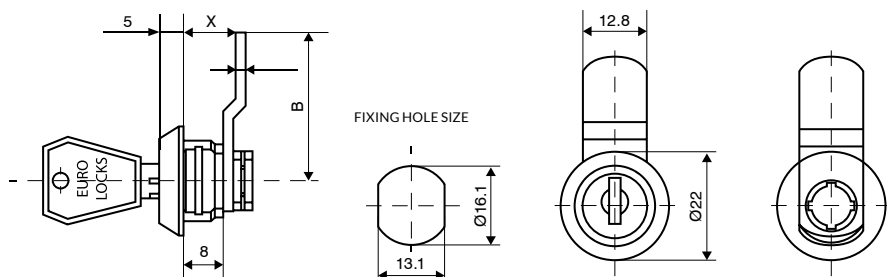
- shapes and mounting methods



Milling "X"	Dimension "G" plate thickness [mm]
01	0.56-0.82
02	0.82-1.22
03	1.22-1.63



0202 CAMLOCK

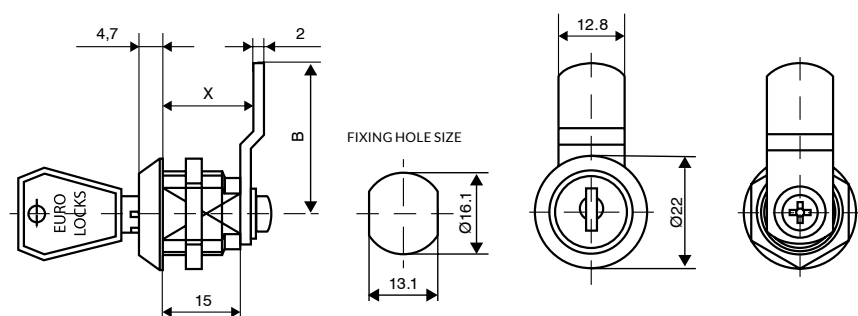


- M – "Master" Key System is supplied to order only



Key series	Number of available combinations	Key movement to unlock	Available variants of key combinations	Maximum panel thickness for nut fixing	Milling 'X'	Lock fixing to panel	Available head shapes	Lock finish (electroplated coating)
800 double entry	100	1; 2; 3; 8; 9	KTP; KTD; KTDS	2.5 mm	02	nut, clip	conical	7 – nickel (standard) 2 – chrome (on request)

0233 CAMLOCK

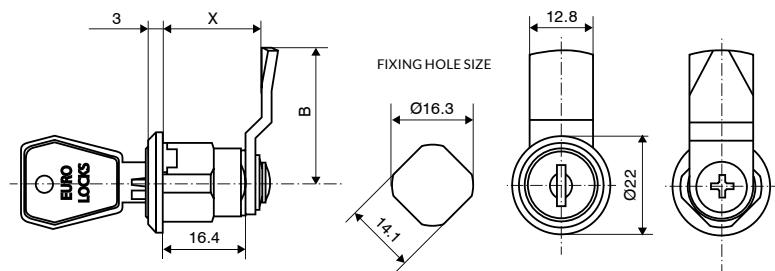


- M – "Master" Key System is supplied to order only
- Possibility to change mounting method to horseshoe clip by making the milling adjusted to defined panel thickness



Key series	Number of available combinations	Key movement to unlock	Available variants of key combinations	Maximum panel thickness for nut fixing	Milling 'X'	Lock fixing to panel	Available head shapes	Lock finish (electroplated coating)
800 double entry	100	1; 2; 3; 8	KTP; KTD; KTDS	9 mm	–	nut	conical	7 – nickel (standard) 2 – chrome (on request)

B827/C046 CAMLOCK (ENCLOSURES)

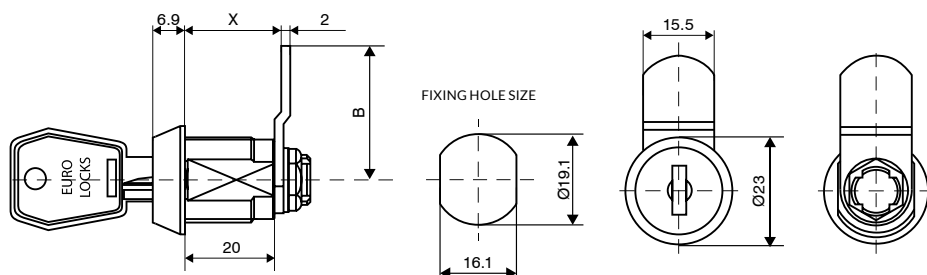


- M – "Master" Key System is supplied to order only



Product ID	Key series	Number of available combinations	Key movement to unlock	Available variants of key combinations	Maximum panel thickness for nut fixing	Milling 'X'	Lock fixing to panel	Available head shapes	Lock finish (electroplated coating)
B827	1D single entry no 2233	200	8	KTP; KTD; KTDS	7 mm	–	nut	round	7 – standard nickel
C046	800 double entry	100							

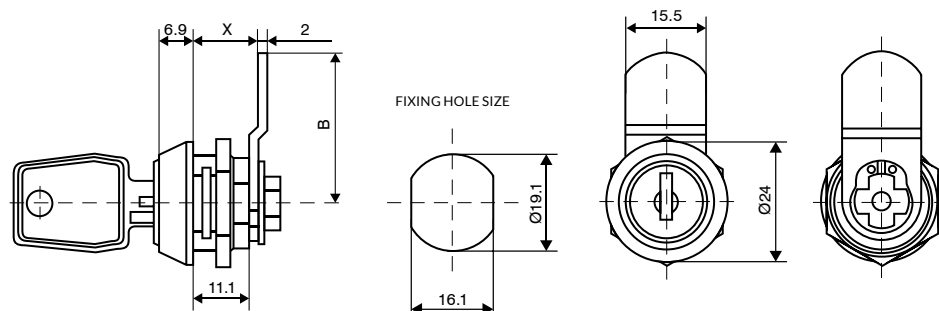
B671 CAMLOCK



- M - "Master" Key System is supplied to order only

Key series	Number of available combinations	Key movement to unlock	Available variants of key combinations	Maximum panel thickness for nut fixing	Milling 'X'	Lock fixing to panel	Available head shapes	Lock finish (electroplated coating)
25/27 double entry	2000	1; 2; 3; 8	KTP; KTD; KTDS	12 mm	02	nut, clip	conical	7 - nickel (standard) 2 - chrome (on request)

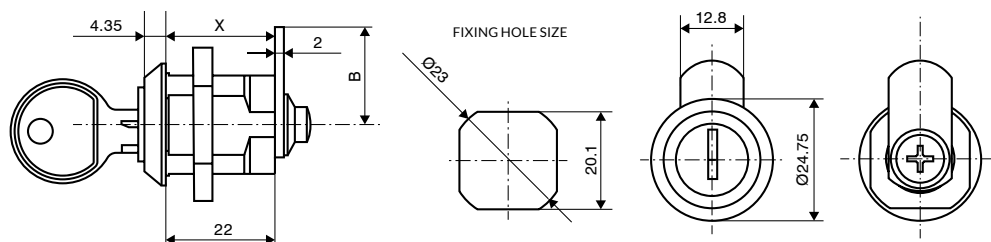
F298 CAMLOCK



- M - "Master" Key System is supplied to order only
- Stainless steel cap

Key series	Number of available combinations	Key movement to unlock	Available variants of key combinations	Maximum panel thickness for nut fixing	Milling 'X'	Lock fixing to panel	Available head shapes	Lock finish (electroplated coating)
9000 double entry	500	1; 2; 3	KTP; KTD; KTDS	5 mm	02	nut, clip	conical	7 - nickel (standard) 2 - chrome (on request)

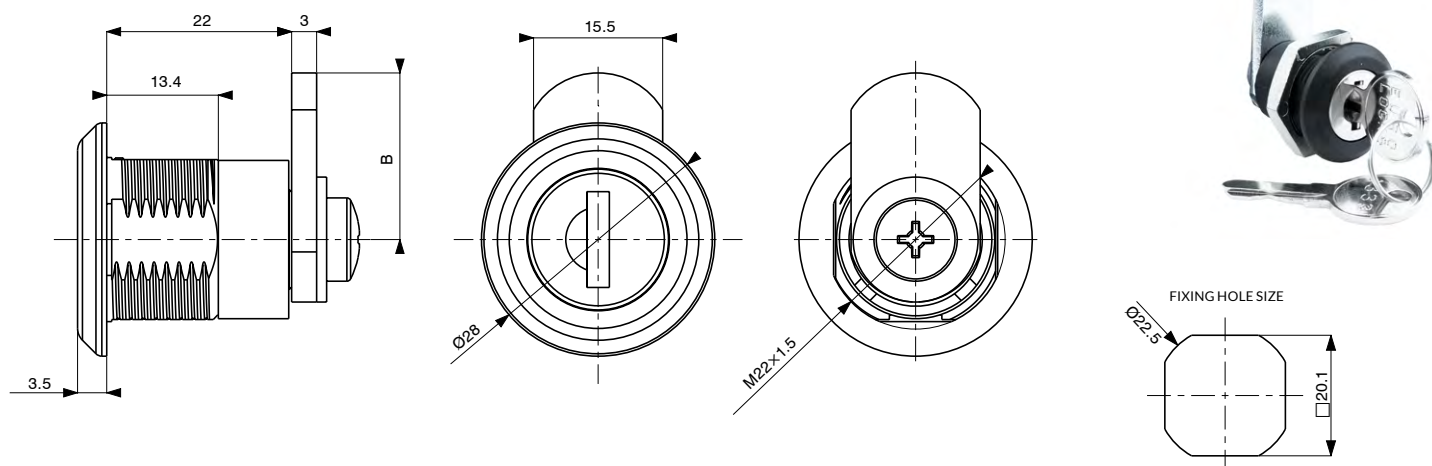
B850 CAMLOCK (ENCLOSURES)



Key series	Number of available combinations	Key movement to unlock	Available variants of key combinations	Maximum panel thickness for nut fixing	Milling 'X'	Lock fixing to panel	Available head shapes	Lock finish (electroplated coating)
89 double entry	200	8	KTP; KTD; KTDS	13 mm	-	nut	conical	2 - chrome



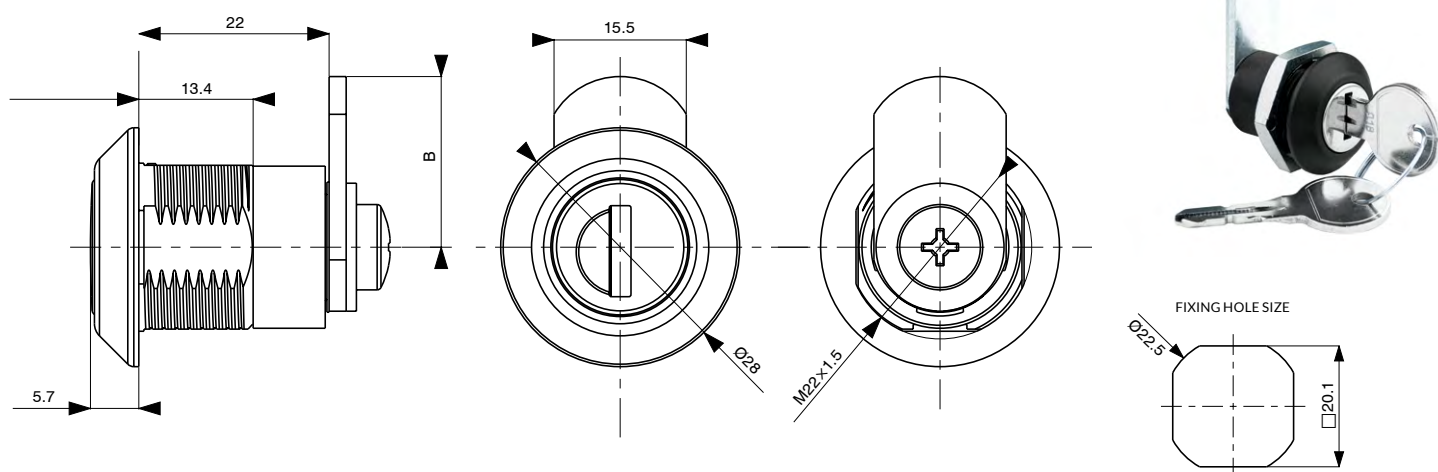
P858/P885 CAMLOCK (ENCLOSURES)



Product code	Key series	Number of available combinations	Key movement to unlock	Available variants of key combinations	Maximum panel thickness	Lock fixing to panel	Available head shapes	Lock finish (electroplated coating)
P858	R-1333 single entry	500	8	KTP; KTD; KTDS	8 mm	nut	conical	Barrel: ZAMAK Housing: PA6GF30
P885	9000 double entry							

- Material of barrel: ZAMAK
- M - "Master" Key System is supplied to order only and available in P885

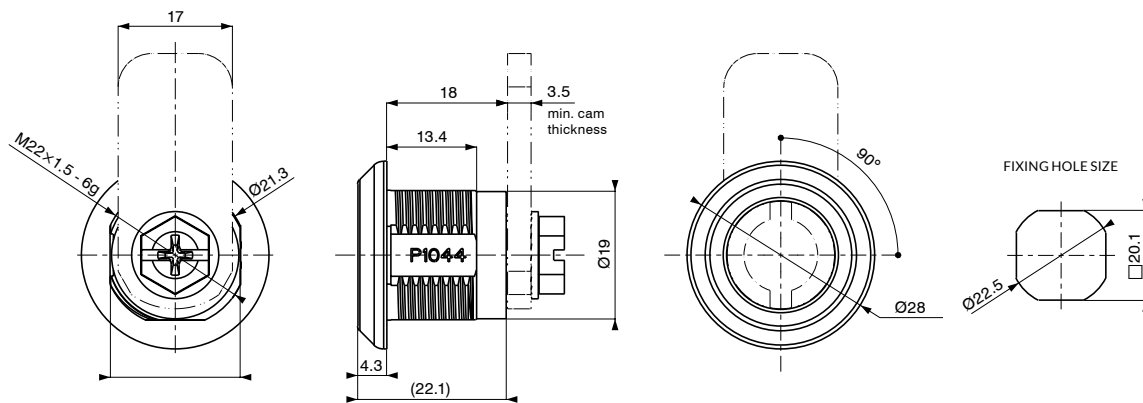
P863/P884 CAMLOCK (ENCLOSURES)



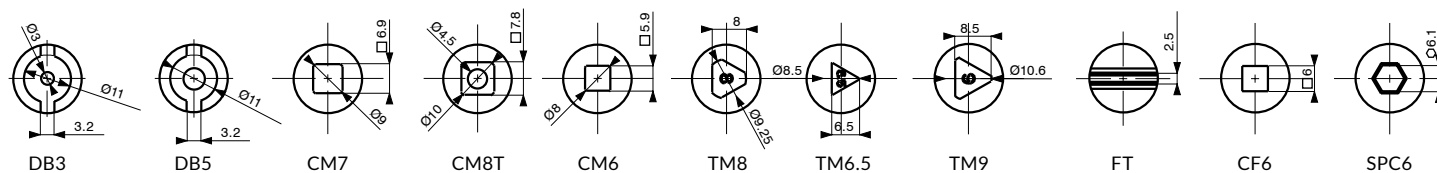
Product code	Key series	Number of available combinations	Key movement to unlock	Available variants of key combinations	Maximum panel thickness	Lock fixing to panel	Available head shapes	Lock finish (electroplated coating)
P863	89 double entry	200	8	KTP; KTD; KTDS	8 mm	nut	conical	Barrel: ZAMAK Housing: PA6GF30
P884	20 double entry	200 nonmaster 50 master						

- Material of barrel: ZAMAK
- M - "Master" Key System is supplied to order only and available in P884

P859 SPANNER LOCK



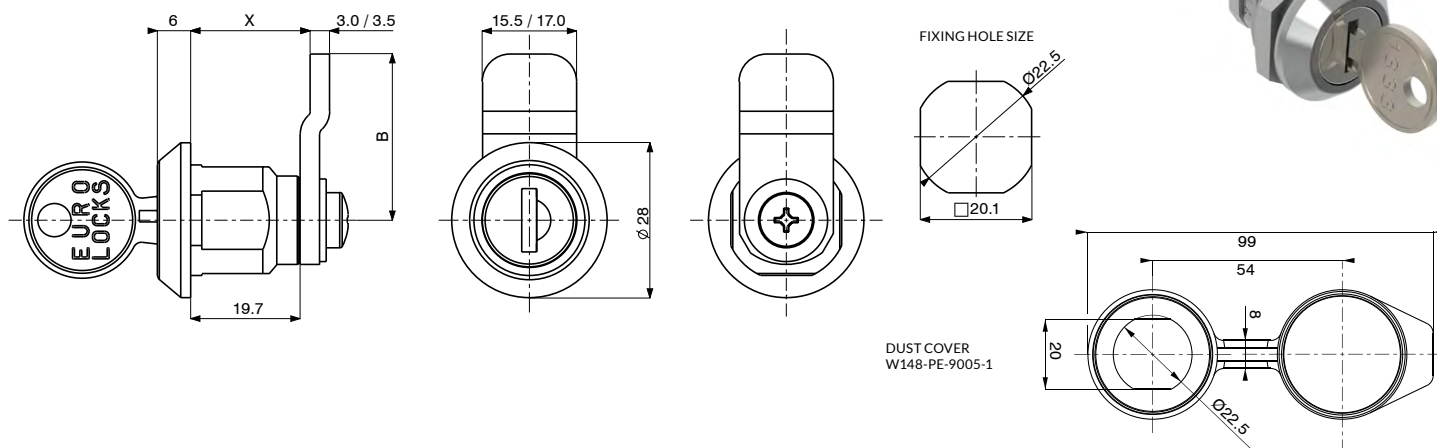
Available barrel shapes



Available barrel shapes	Key movement to unlock	Maximum panel thickness	Milling "X"	Lock fixing to panel	Available head shapes	Barrel finish
double bit, triangle, square	8	11 mm	-	nut	conical	7 - nickel (standard) 2 - chrome (on request)

- IP65 rated
- Key available on request – refer to page 47

P888 CAMLOCK (ENCLOSURES)

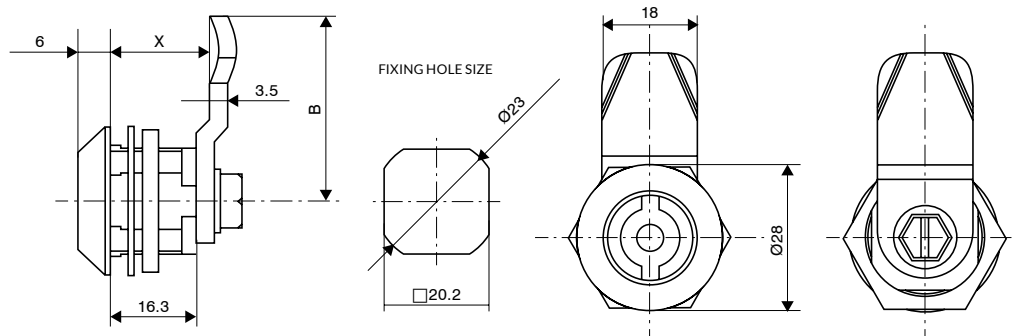


Product code	Key series	Number of available combinations	Key movement to unlock	Available variants of key combinations	Maximum panel thickness	Lock fixing to panel	Available head shapes	Lock finish (electroplated coating)
P888	R-1333 single entry	500	8	KTP; KTD; KTDS	9 mm	nut	conical	2 - chrome (standard)
P889	9000 double entry							7 - nickel (on request)

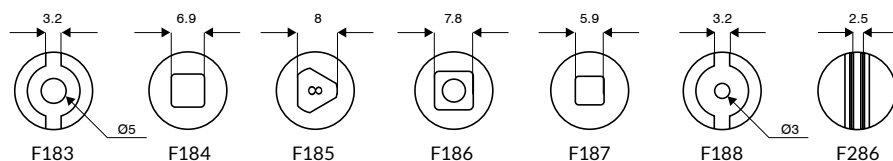
- IP65 rated (recommended to use together with W148-PE-9005-1 anti-dust cover)
- M - "Master" Key System is supplied to order only and available in P889



F183 SPANNER LOCK



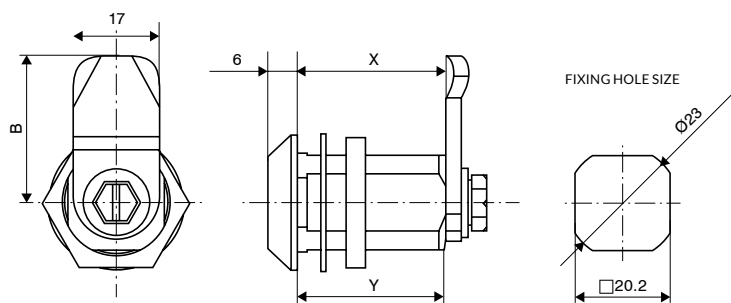
Available barrel shapes



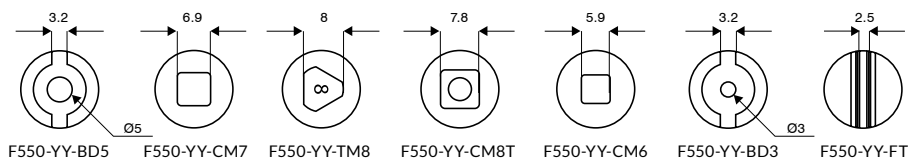
Available barrel shapes	Key movement to unlock	Maximum panel thickness	Milling "X"	Lock fixing to panel	Available head shapes	Lock finish (electroplated coating)
double bit, triangle, square	8	8 mm	-	nut	conical	7 - nickel (standard) 2 - chrome (on request)

- Maximum panel thickness for nut fixing: 8 mm
- IP65 rated
- Key available on request - refer to page 47

F550 SPANNER LOCK



Available barrel shapes

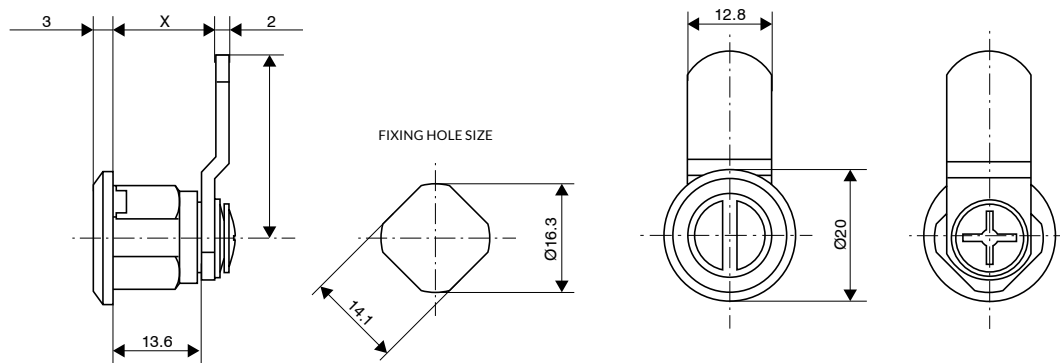


Product code	Maximum panel thickness for nut fixing [mm]
F550-30	25
F550-40	35
F550-50	45
F550-60	53

Available barrel shapes	Key movement to unlock	Maximum panel thickness	Milling "X"	Lock fixing to panel	Available head shapes	Lock finish (electroplated coating)
double bit, triangle, square	8	depends upon housing length (see table above)	-	nut	conical	7 - nickel (standard) 2 - chrome (on request)

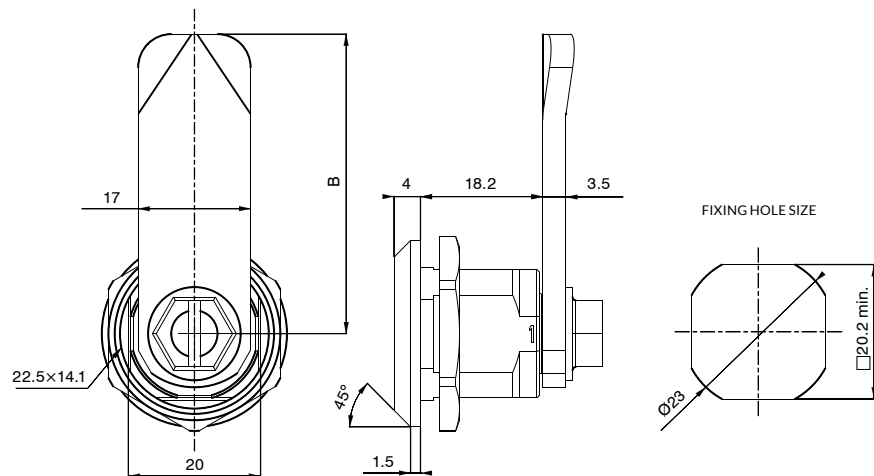
- IP65 rated
- Key available on request - refer to page 47

B826 SPANNER LOCK

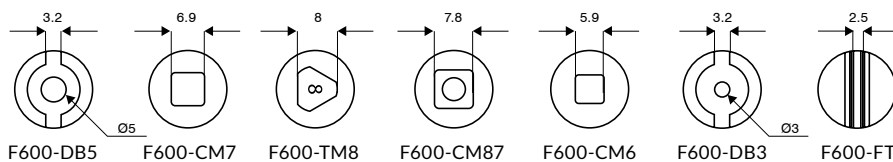


Product code	Available head shapes	Key movement to unlock	Maximum panel thickness	Milling "X"	Lock fixing to panel	Available head shapes	Lock finish (electroplated coating)
B826	screwdriver, coin	8	7 mm	-	nut	round	7 - nickel (standard) 2 - chrome (on request)
B236	square 6 mm						
B971	triangle 7 mm or screwdriver						

F600 SPANNER LOCK



Available barrel shapes



Available barrel shapes	Key movement to unlock	Maximum panel thickness	Milling "X"	Lock fixing to panel	Available head shapes	Lock finish (electroplated coating)
double bit, triangle, square	8	11 mm	-	nut	conical	7 - nickel (standard) 2 - chrome (on request)

- IP65 rated
- Key available on request - refer to page 47



KEYS FOR SPANNER LOCKS

Barrel shape	Short keys		Long keys
	ZAMAK	PA6	ZAMAK
DB3	W114	W115	F8412-DB3
BD5	W114	W115	F8412-DB5
CM7			F8412-C7M
CM8T	W117	W164	F8412-C8M
CM6	W119	W177	F8412-C6M
CF6			F8080
TM6,5	W116	W118	F8412-T6.5
TM8	W110	W111	F8412-T8M
TM9		W121	F8412-T9M

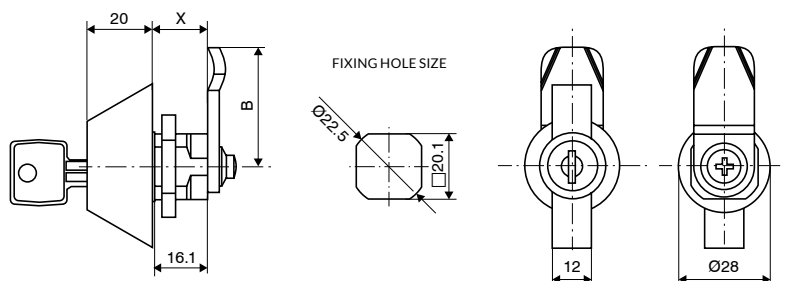


W110

W115

W119

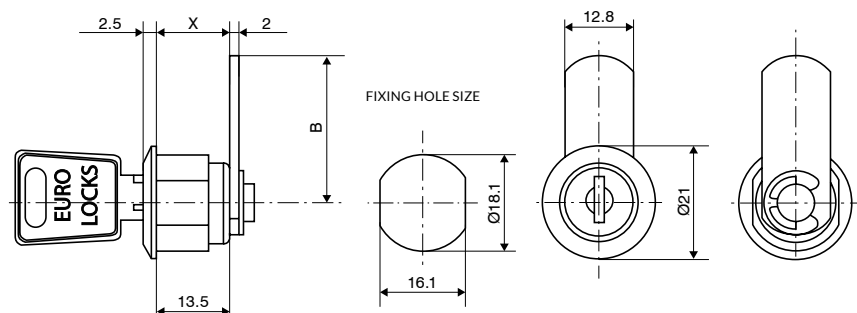
0025/0036 WATER RESISTANT WING HANDLE (ENCLOSURES)



Product code	Key series	Number of available combinations	Key movement to unlock	Available variants of key combinations	Maximum panel thickness	Milling "X"	Lock fixing to panel	Lock finish (electroplated coating)
0025	92 single entry	200	1; 2	KTP; KTD; KTDS	9 mm	-	nut	2 - chrome 1B - powder coating
0036	9000 double entry	500						

• IP65 rated

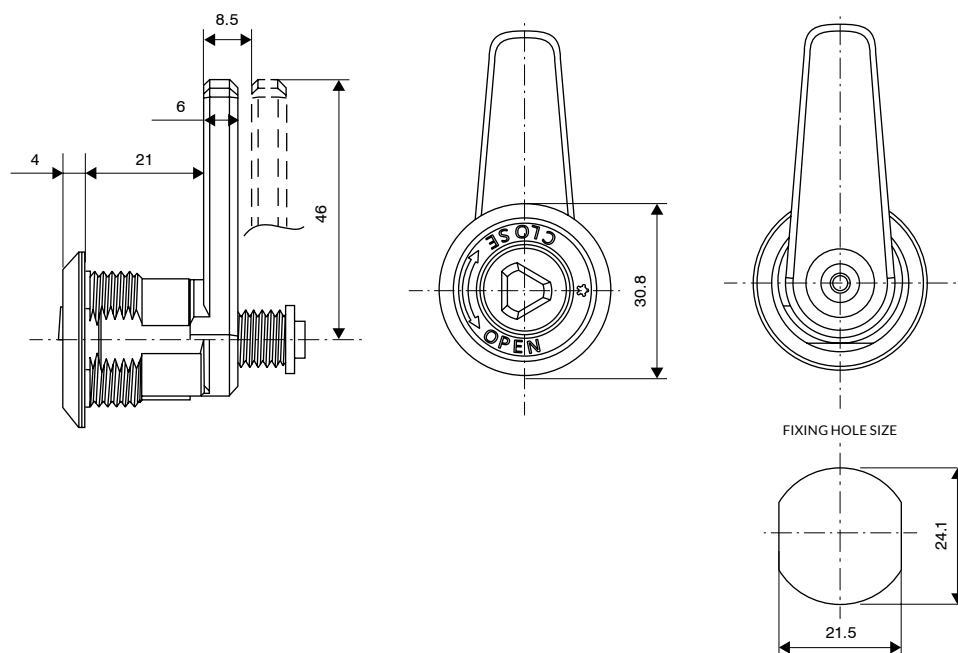
P451 CAMLOCK (ENCLOSURES)



Key series	Number of available combinations	Key movement to unlock	Available variants of key combinations	Maximum panel thickness for nut fixing	Milling "X"	Lock fixing to panel	Available head shapes	Lock finish (electroplated coating)
FH double entry	200	3	KTP; KTD; KTDS	6 mm	-	nut	round	plastic - RAL 7035

• M - "Master" Key System is supplied to order only

D144/D329 COMPRESSION LOCK



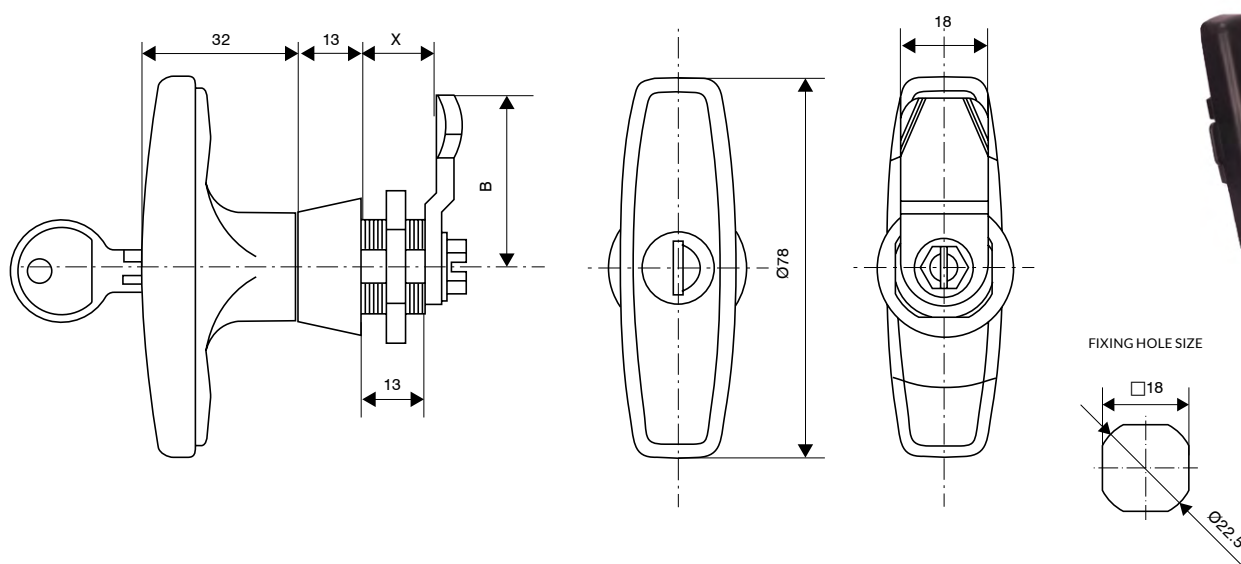
D329



D144

Available barrel shapes	Key movement to lock before tightening	Maximum panel thickness	Milling "X"	Lock fixing to panel	Cam stroke	Lock finish (electroplated coating)
triangle 8 mm; square 8 mm; "D" shape	90° to the right	6 mm	-	nut	8.5 mm	6A - zinc plated

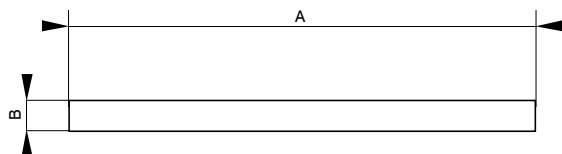
C839 T-HANDLE



Key series	Number of available combinations	Key movement to unlock	Available variants of key combinations	Maximum panel thickness for nut fixing	Milling "X"	Lock fixing to panel	Available head shapes	Lock finish (electroplated coating)
89 double entry	200	1	KTP; KTD; KTDs	8 mm	-	nut	-	black - plastic



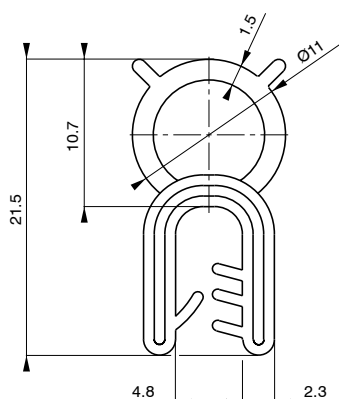
U306 CELL SPONGE RUBBER



- Material: black EPDM with a density $\sim 120 \text{ kg/m}^3$
- Range of A and B:
Thickness B: 1.5–20 mm
Width A: 5–100 mm
- Dimensions A and B according to the customer's order



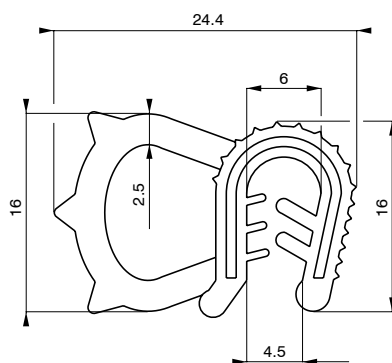
U200 GASKET



- For panel thickness: 1–3 mm
- Material: black EPDM 550 g/dm³
- Gasket with steel core
- Seals packaged in 50 current meters discs



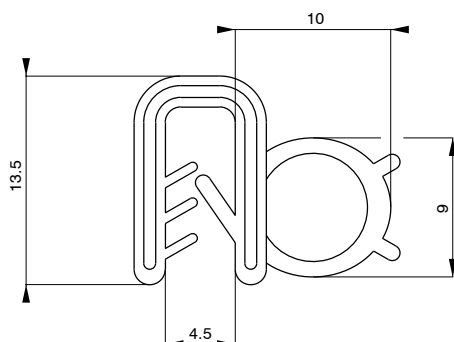
U204 GASKET



- For panel thickness: 1–3 mm
- Material: black EPDM 550 g/dm³
- Gasket with steel core
- Seals packaged in 50 current meters discs



U207 GASKET



- For panel thickness: 1–3 mm
- Material: black EPDM 550 g/dm³
- Gasket with steel core
- Seals packaged in 50 current meters discs



NOTES

**EURO-LOCKS Sp. z o.o.**

41-708 Ruda Śląska, ul. Pawła 29, Poland

T: +48 32 344 78 82

T: +48 32 344 78 84

F: +48 32 344 78 74

M: +48 694-430 494

E: sprzedaz@euro-locks.pl

**EURO-LOCKS SA NV**

Rue de la Fontaine 8, 6600 Bastogne, Belgium

T: +32 61 212 261

F: +32 61 212 265

E: sales@euro-locks.be

**EURO-LOCKS SA**

1 Rue du Stade, 57730 Folschviller, France

T: +33 (0) 3 87 92 61 11

F: +33 (0) 3 87 92 42 02

E: euro-locks@euro-locks.fr

**EURO-LOCKS GmbH**

Am Bruchwald 22, D-66280

Sulzbach/Neuweiler, Germany

T: +49 (0) 6897 9072 0

F: +49 (0) 6897 9072 99

E: vertrieb@euro-locks.de

**Lowe & Fletcher, Inc.**

650 Airport Place, MI 49441 Norton Shores
USA

T: 001 616 994 0490

F: 001 616 994 0480

E: sales@euro-locks.com

**LOWE & FLETCHER Ltd**

Moorcroft Drive, Wednesbury, West Midlands
WS10 7DE, England

T: +44 121 505 0400

F: +44 121 505 0420

E: sales@lowe-and-fletcher.co.uk

www.euro-locks.pl

www.connectedlocking.com

www.lowe-and-fletcher.com

L&F **LOWE&FLETCHERGROUP**
A FAMILY BUSINESS SINCE 1889