



ECHO

powered by Capture Technology



ECHO Lock is totally unique, yet you already hold the key.

Meet ECHO, the first battery-free NFC-powered locking system. Unlock and lock with just a tap of your smartphone—no keys, no batteries, no maintenance. The eco-friendly future of lock management is here.

A groundbreaking innovation, ECHO uses NFC technology to harvest the tiny amount of energy it needs from your phone to open and close your lock. **It's not just evolutionary—it's revolutionary.** By eliminating the need for traditional power sources, ECHO delivers an eco-friendly, hassle-free locking experience, reducing energy consumption and environmental impact.

Available in three flexible operating modes – Private Mode, Public Mode and Registered Public Mode - the ECHO lock is configured and controlled using the ECHO Mobile App (available on both iOS and Android platforms).

For larger businesses or those that require more control, the ECHO lock can be administered through the Web Portal (Standard or Pro version available).

Applications for this innovative lock are endless and include workspace storage, asset management, tourist attractions, transport hubs and sports clubs to name but a few.

Experience ECHO for yourself. Simplicity, sustainability, and security—redefined.



At a glance:

- ✓ Battery-free
- ✓ Wire-free
- ✓ Power-free
- ✓ Powered by Near Field Communication (NFC) Technology
- ✓ ECHO App available on iOS and Android platforms
- ✓ Multiple user options: Administrator, User, and Shared Access
- ✓ Key override as standard

Product ID: 3450

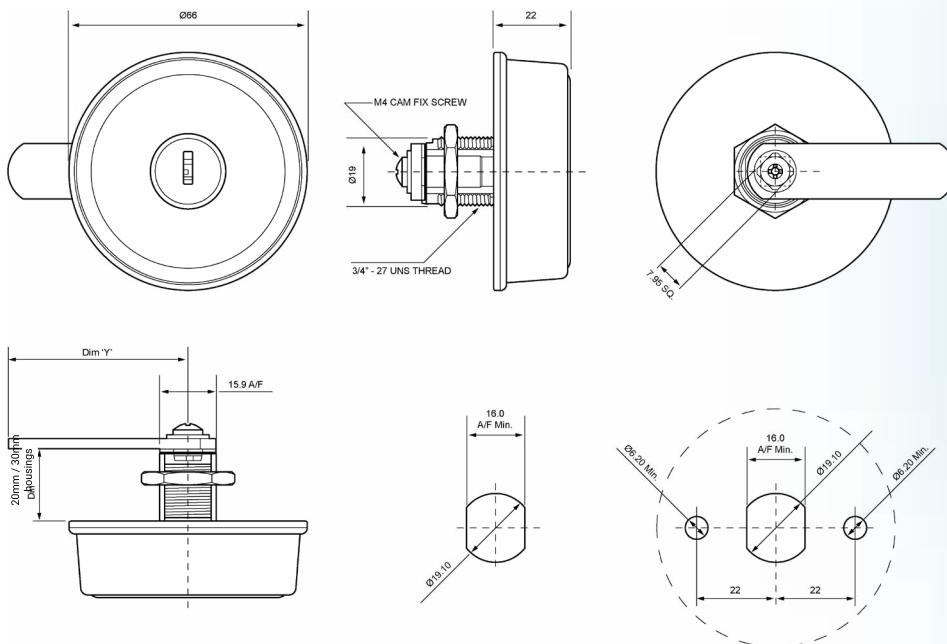
ECHO Lock



Interested? Scan the QR Code to find out more

Standard Features

- ✓ Compatible with iOS 16 and above. Android 10 to 15
- ✓ Mobile network connection or Wi-Fi connection required
- ✓ **User modes:** Public mode, registered public mode or private mode
- ✓ **Fixing options:** Left Hand or Right Hand operation - customer to decide when fitting (stop plate supplied)
- ✓ **Lock movement:** 90° rotation for open / close
- ✓ **Standard finish:** Black, custom colours available on request (MOQ applies)
- ✓ **Customisation:** Customisable logo area for customer logo application
- ✓ **Environmental Protection:** IP4X Rated – Not for wet areas / applications
- ✓ **Temperature Rating:** -8°C to +50 °C
- ✓ **Housing length:** 20mm and 30mm housing length available to suit door thicknesses up to 24mm (additional accessories may apply)
- ✓ **Fitting options:** Standard or twist resist versions available
- ✓ **Security:** Non shuttered 10-disc, anti-tamper barrel with steel override key
- ✓ **Robust design:** Zinc diecast construction housing
- ✓ **Housing fixing:** Nut fixing with 3/4" -27UNS thread
- ✓ **Cam fixing:** 8mm SQ. with M4 thread
- ✓ Range of cam offsets to suit application
- ✓ **Declaration of Conformity:** CE Marked



Lowe & Fletcher Ltd (UK)

E: sales@lowe-and-fletcher.co.uk

T: +44 (0) 121 505 0400

Lowe & Fletcher Inc (USA)

E: sales@loweandfletcherinc.com

T: +1 (616) 994 0490

Euro-Locks SA NV (Belgium)

E: sales@euro-locks.be

T: +32 61 212.261

Euro-Locks SA (France)

E: euro-locks@euro-locks.fr

T: +33 (0)3.87.92.61.11

Euro-Locks Sicherheitseinrichtungen GmbH (Germany)

E: vertrieb@euro-locks.de

T: +49 (0) 6897 9072 0

Euro-Locks Sp. z o. o. (Poland)

E: sekretariat@euro-locks.pl

T: +48 (32) 344-78-70, -82, -84

